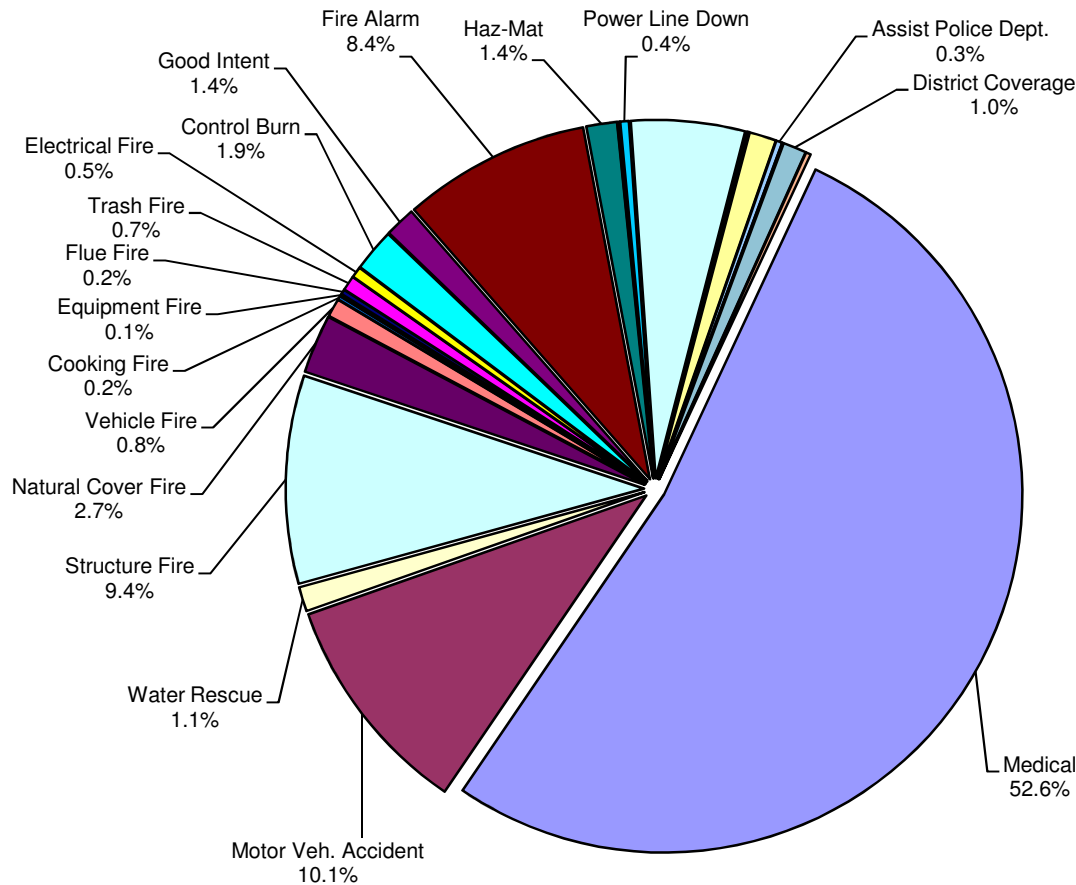




LOGAN-ROGERSVILLE FIRE PROTECTION DISTRICT

3427 South State Hwy 125
Rogersville, MO 65742
(417) 753-4265

TYPE AND NUMBER OF EMERGENCY CALLS RUN DURING THE YEAR OF 2017



Type	# of Calls	Percentage
Medical	952	52.6%
Motor Veh. Accident	183	10.1%
Water Rescue	20	1.1%
Structure Fire	170	9.4%
Natural Cover Fire	48	2.7%
Vehicle Fire	15	0.8%
Cooking Fire	3	0.2%
Equipment Fire	2	0.1%
Flue Fire	4	0.2%
Trash Fire	12	0.7%
Electrical Fire	9	0.5%
Control Burn	35	1.9%
Good Intent	25	1.4%
Fire Alarm	153	8.4%
Haz-Mat	25	1.4%
Storm Damage	2	0.1%
Power Line Down	7	0.4%
Service Call	93	5.1%
Missing Person	2	0.1%
CO Alarm	22	1.2%
Assist Police Dept.	5	0.3%
Bomb Scare	1	0.1%
District Coverage	19	1.0%
Wrong District	4	0.2%

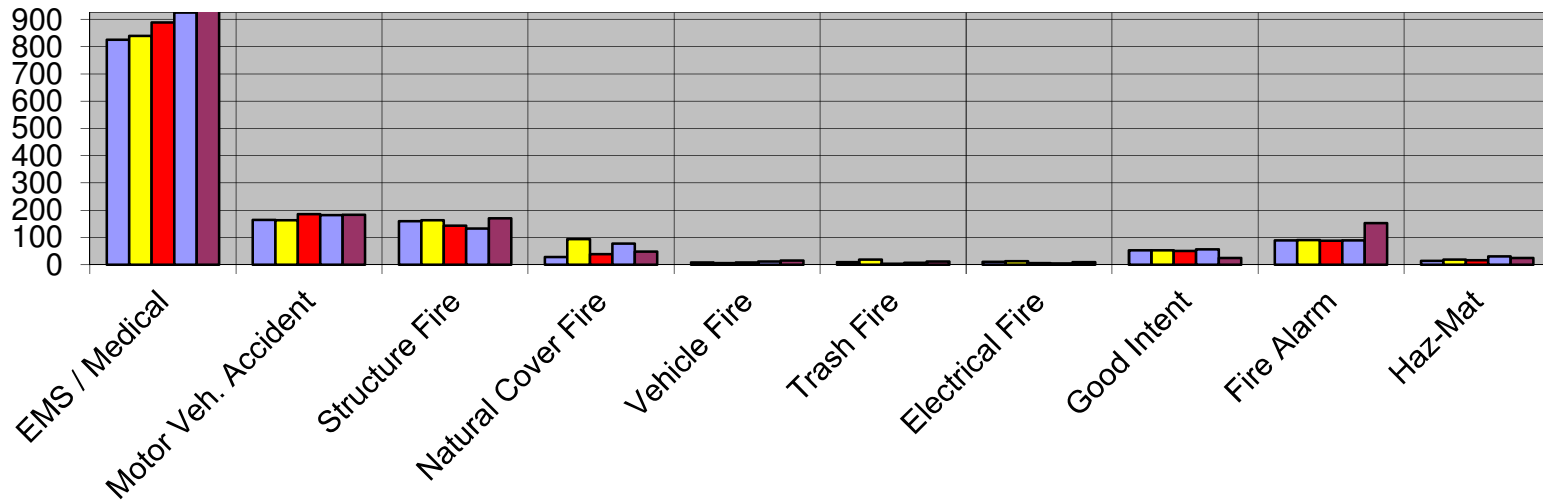
Total Number: 1811



LOGAN-ROGERSVILLE FIRE PROTECTION DISTRICT

3427 South State Hwy 125
Rogersville, MO 65742
(417) 753-4265

TYPE OF EMERGENCY CALLS PER YEAR > 2013 THROUGH 2017 <



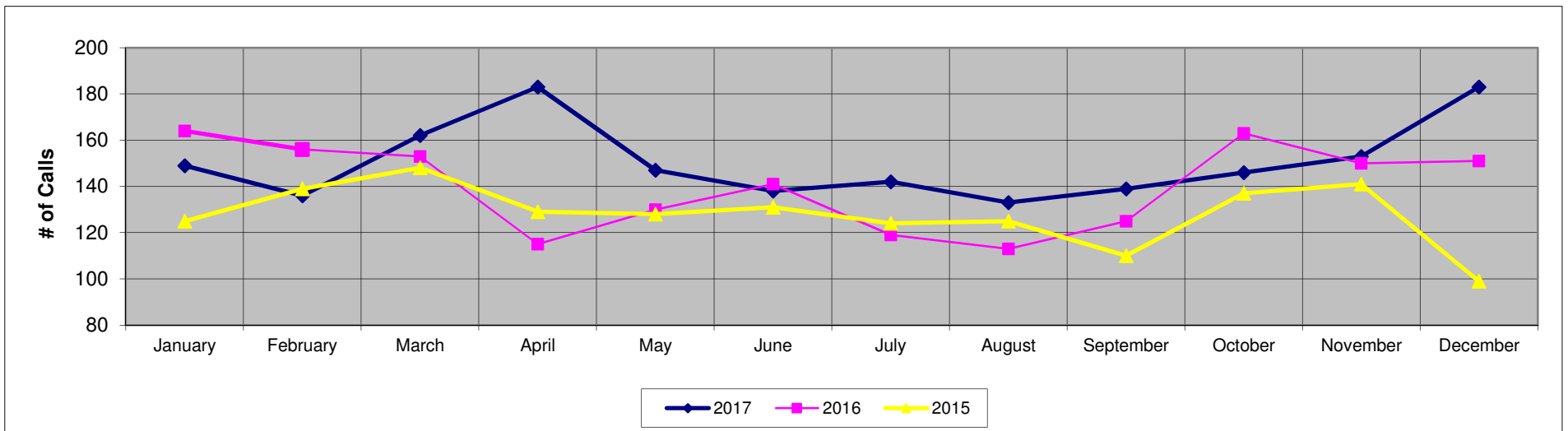
Type	2013	2014	2015	2016	2017
EMS / Medical	825	839	889	925	952
Motor Veh. Accident	164	163	185	182	183
Structure Fire	159	163	143	132	170
Natural Cover Fire	28	94	39	77	48
Vehicle Fire	8	6	8	12	15
Trash Fire	9	19	3	7	12
Electrical Fire	10	13	6	5	9
Good Intent	53	53	50	56	25
Fire Alarm	89	90	88	89	153
Haz-Mat	14	19	16	30	25



LOGAN-ROGERSVILLE FIRE PROTECTION DISTRICT

3427 South State Hwy 125
Rogersville, MO 65742
(417) 753-4265

NUMBER OF EMERGENCY CALLS PER MONTH > 2015 THROUGH 2017 <



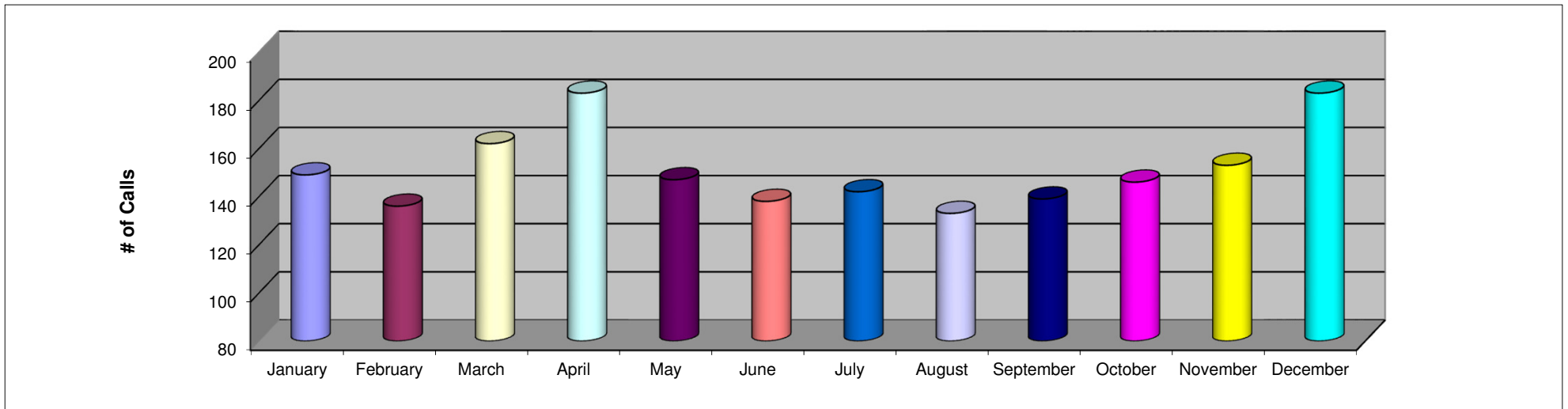
Month	2017	2016	2015
January	149	164	125
February	136	156	139
March	162	153	148
April	183	115	129
May	147	130	128
June	138	141	131
July	142	119	124
August	133	113	125
September	139	125	110
October	146	163	137
November	153	150	141
December	183	151	99



LOGAN-ROGERSVILLE FIRE PROTECTION DISTRICT

3427 South State Hwy 125
Rogersville, MO 65742
(417) 753-4265

NUMBER OF EMERGENCY CALLS PER MONTH DURING THE YEAR OF 2017



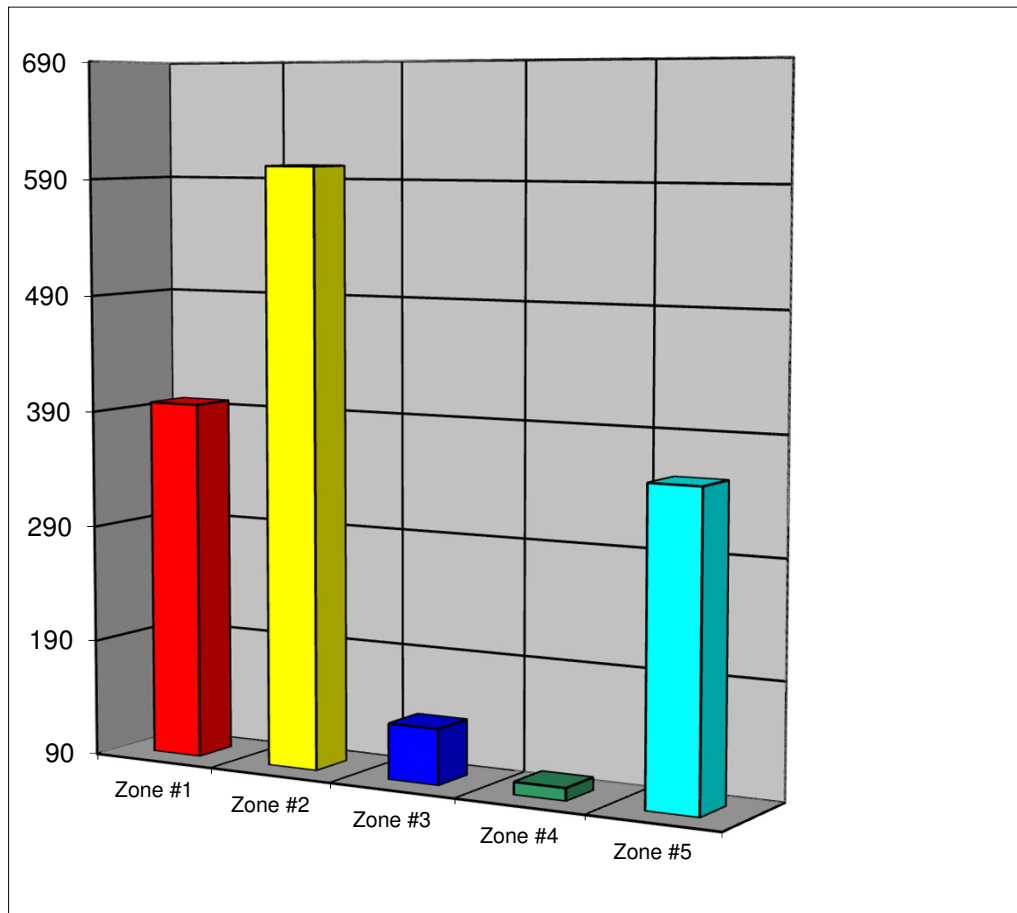
Month	2017
January	149
February	136
March	162
April	183
May	147
June	138
July	142
August	133
September	139
October	146
November	153
December	183



LOGAN-ROGERSVILLE FIRE PROTECTION DISTRICT

3427 South State Hwy 125
Rogersville, MO 65742
(417) 753-4265

EMERGENCY CALLS RUN PER STATION ZONE DURING THE YEAR OF 2017



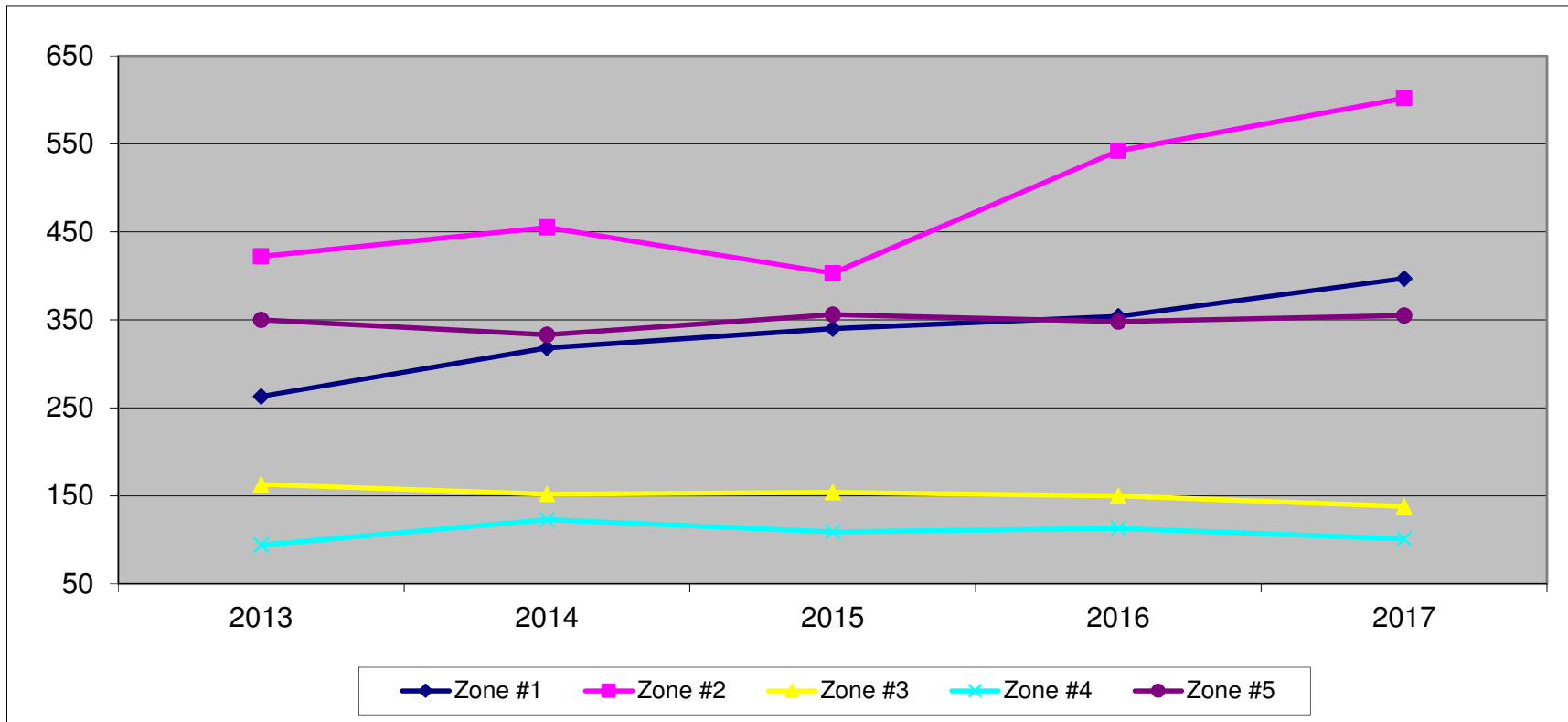
Totals				
Zone #1	Zone #2	Zone #3	Zone #4	Zone #5
397	602	138	101	355



LOGAN-ROGERSVILLE FIRE PROTECTION DISTRICT

3427 South State Hwy 125
Rogersville, MO 65742
(417) 753-4265

EMERGENCY CALLS RUN PER STATION ZONE > 2013 THROUGH 2017 <



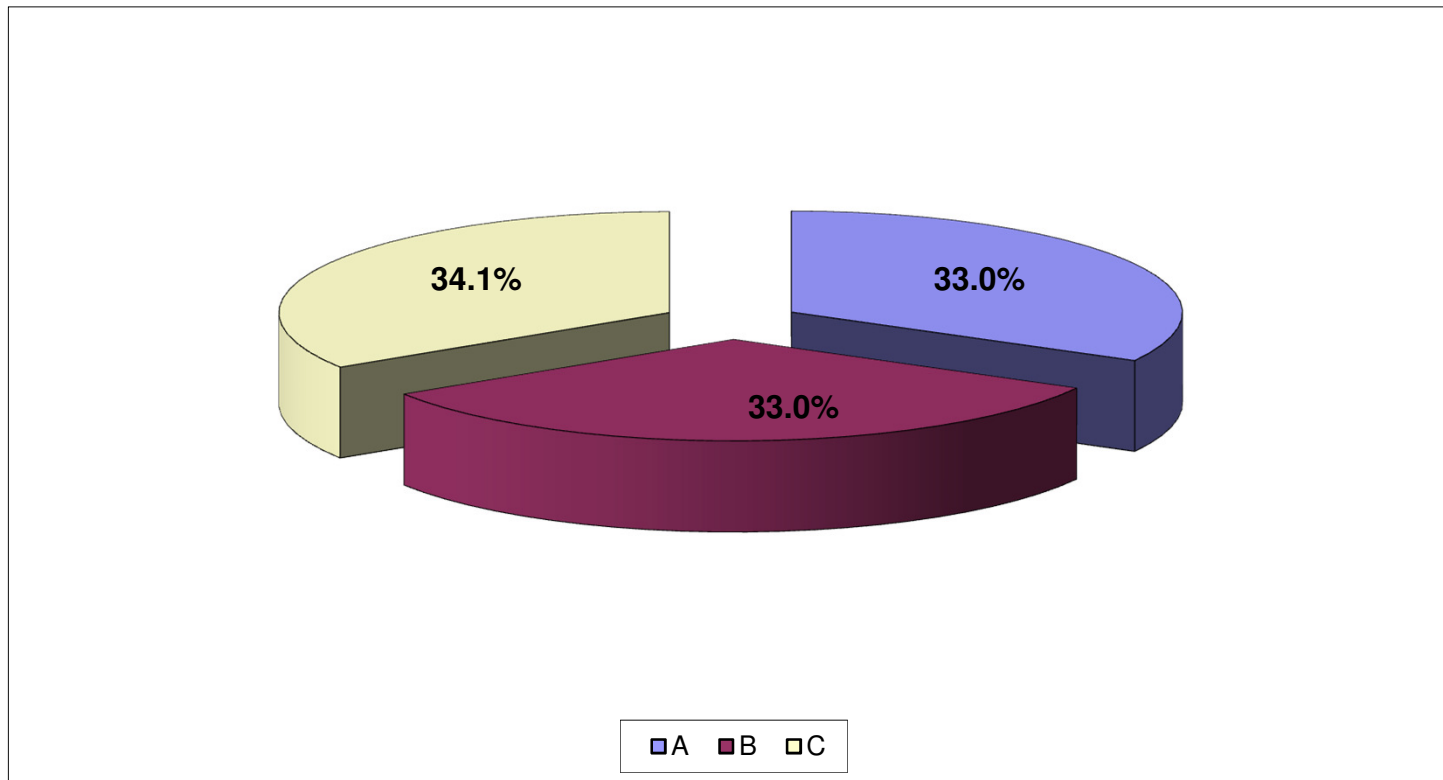
STATION ZONE	2013	2014	2015	2016	2017
Zone #1	263	318	340	354	397
Zone #2	422	455	403	542	602
Zone #3	163	152	154	150	138
Zone #4	94	123	109	113	101
Zone #5	350	333	356	348	355



LOGAN-ROGERSVILLE FIRE PROTECTION DISTRICT

3427 South State Hwy 125
Rogersville, MO 65742
(417) 753-4265

EMERGENCY CALLS RUN PER SHIFT DURING THE YEAR OF 2017



Shift	# of Calls	Percent
A	597	33.0%
B	597	33.0%
C	617	34.1%



LOGAN-ROGERSVILLE FIRE PROTECTION DISTRICT

3427 South State Hwy 125
Rogersville, MO 65742
(417) 753-4265

EMERGENCY CALLS RUN PER APPARATUS DURING THE YEAR OF 2017

Apparatus	2017	2016	2015	2014	2013	2012	2011	2010
Brush 223	291	319	227	249	198	159	19	14
Brush 321	17	42	78	51	32	73	83	40
Brush 422	42	60	11	73	31	40	51	44
Engine 334	65	56	129	95	71	64	13	8
Engine 435	14	53	130	144	88	110	82	54
Engine 132	484	177	0	0	0	0	0	0
Engine 233	629	388	496	600	748	903	697	724
Engine 584	51	299	404	391	689	709	568	595
Rescue 211	5	8	4	10	1	3	3	4
Service 403	659	595	594	517	492	530	316	282
Service 100	301	4	0	0	0	0	0	0
Car -1	182	0	0	0	0	0	0	0
Car - 2	141	0	0	0	0	0	0	0
Insp - 1	46	0	0	0	0	0	0	0
Tanker 543	0	0	0	2	1	3	4	11
Tanker 142	41	32	29	49	38	50	53	57
Tanker 341	34	33	30	38	13	25	10	23
Tanker 444	0	0	0	0	0	0	0	0
Truck 151	13	8	7	13	5	6	7	2



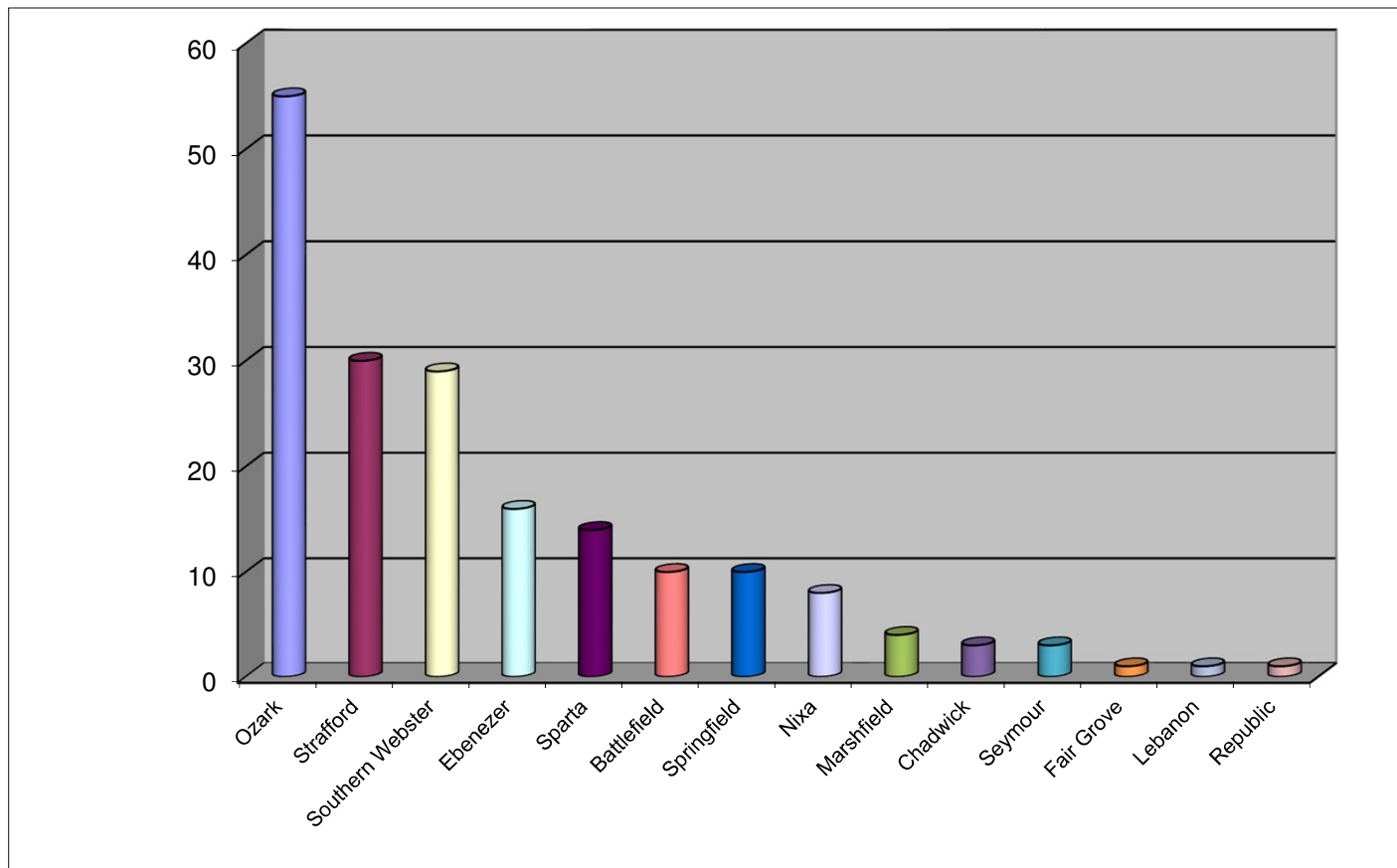
LOGAN-ROGERSVILLE FIRE PROTECTION DISTRICT

3427 South State Hwy 125
Rogersville, MO 65742
(417) 753-4265

NUMBER OF CALLS IN WHICH MUTUAL AID WAS PROVIDED DURING THE YEAR OF 2017

Departments That We Provided Aid To During Year 2017:

Department	# of Calls
Ozark	55
Strafford	30
Southern Webster	29
Ebenezer	16
Sparta	14
Battlefield	10
Springfield	10
Nixa	8
Marshfield	4
Chadwick	3
Seymour	3
Fair Grove	1
Lebanon	1
Republic	1
Total:	185





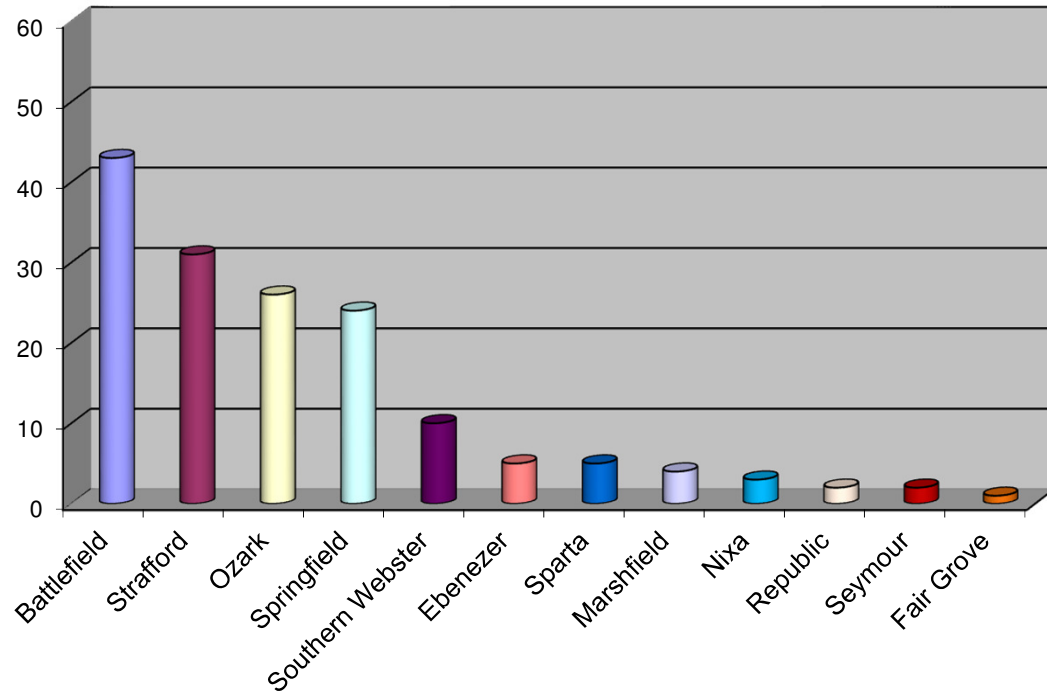
LOGAN-ROGERSVILLE FIRE PROTECTION DISTRICT

3427 South State Hwy 125
Rogersville, MO 65742
(417) 753-4265

NUMBER OF CALLS IN WHICH MUTUAL AID WAS RECEIVED DURING THE YEAR OF 2017

Departments That We Received
Aid From During Year 2017:

Department	# of Calls
Battlefield	43
Strafford	31
Ozark	26
Springfield	24
Southern Webster	10
Ebenezer	5
Sparta	5
Marshfield	4
Nixa	3
Republic	2
Seymour	2
Fair Grove	1
Total:	156

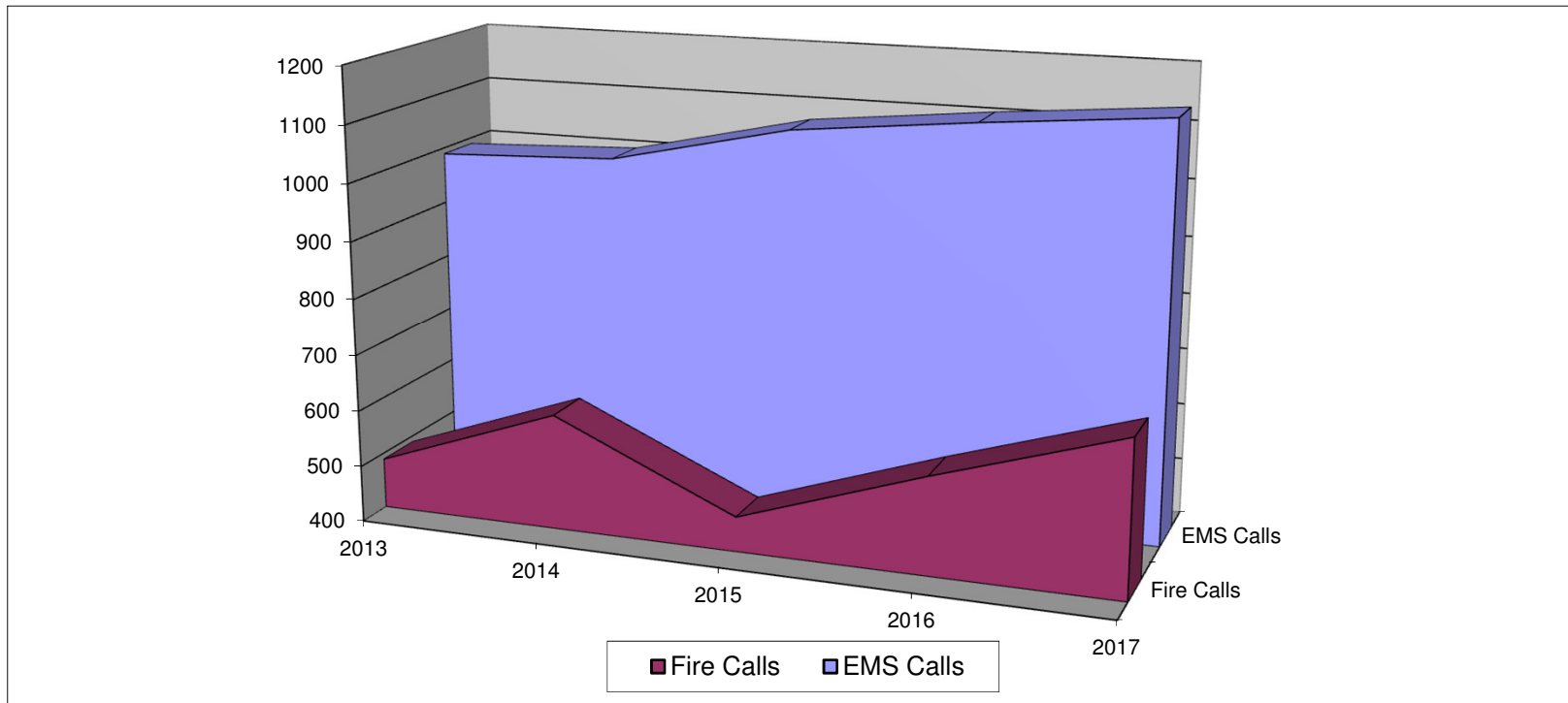




LOGAN-ROGERSVILLE FIRE PROTECTION DISTRICT

3427 South State Hwy 125
Rogersville, MO 65742
(417) 753-4265

TOTAL RESPONSE OF EMS VS. FIRE CALLS > 2013 THROUGH 2017 <



Year	2013		2014		2015		2016		2017	
	No. of EMS Calls	Percentage	No. of Fire Calls	Percentage	No. of EMS Calls	Percentage	No. of Fire Calls	Percentage	Total Calls Per Year	
2013	989	66.9%	489	33.1%	1478					
2014	1002	62.4%	605	37.6%	1607					
2015	1074	69.9%	462	30.1%	1536					
2016	1107	65.9%	573	34.1%	1680					
2017	1135	62.7%	676	37.3%	1811					



LOGAN-ROGERSVILLE FIRE PROTECTION DISTRICT

3427 South State Hwy 125
Rogersville, MO 65742
(417) 753-4265

Truck Maintenance Report 2017

	FUEL COST	REPAIR COST	TOTAL COST
B223	\$ 898.46	\$ 107.19	\$ 1,005.65
B321	\$ 195.19	\$ 53.95	\$ 249.14
B422	\$ 401.23	\$ 57.44	\$ 458.67
CAR-1	\$ 3,401.79	\$ 1,591.83	\$ 4,993.62
CAR-2	\$ 3,054.35	\$ 896.83	\$ 3,951.18
INSP-1	\$ 2,392.04	\$ 4,790.40	\$ 7,182.44
S100	\$ 3,714.70	\$ 6,041.48	\$ 9,756.18
E435	\$ 314.89	\$ 1,949.56	\$ 2,264.45
E233	\$ 6,185.53	\$ 3,913.74	\$ 10,099.27
E334	\$ 269.67	\$ 542.07	\$ 811.74
E132	\$ 7,397.93	\$ 4,412.16	\$ 11,810.09
E584	\$ 960.75	\$ 6,746.82	\$ 7,707.57
R211	\$ 180.35	\$ 533.69	\$ 714.04
S403	\$ 2,361.40	\$ 7,772.82	\$ 10,134.22
S302	\$ 1,097.08	\$ 992.84	\$ 2,089.92
S201	\$ 97.79	\$ -	\$ 97.79
S212	\$ 793.54	\$ 254.92	\$ 1,048.46
T543	\$ -	\$ -	\$ -
T142	\$ 771.22	\$ 6,049.64	\$ 6,820.86
T341	\$ 334.32	\$ 158.63	\$ 492.95
T444	\$ -	\$ 119.78	\$ 119.78
TK151	\$ 967.84	\$ 2,735.86	\$ 3,703.70
GATOR	\$ -	\$ 40.60	\$ 40.60
TOTAL	\$ 35,790.07	\$ 49,762.25	\$ 85,552.32



LOGAN-ROGERSVILLE FIRE PROTECTION DISTRICT

3427 South State Hwy 125
Rogersville, MO 65742
(417) 753-4265

Apparatus Summary For The Year 2017 APPARATUS SUMMARY

ENGINES	YEAR	MAKE
334	1992	FREIGHTLINER
435	2000	INTERNATIONAL
132	2016	KME PREDATOR
233	2010	KME PREDATOR
584	2006	KME PREDATOR
RESCUES	YEAR	MAKE
211	1995	INTERNATIONAL
BRUSH	YEAR	MAKE
422	2011	CHEVROLET
321	1993	FORD
223	2015	FORD
TRUCK	YEAR	MAKE
151	2001	PIERCE DASH
TANKER	YEAR	MAKE
543	1987	GMC
142	1992	INTERNATIONAL
341	1996	INTERNATIONAL
444	1971	GMC
SERVICE	YEAR	MAKE
CAR 1	2015	CHEVROLET
CAR 2	2015	CHEVROLET
INSP 1	2009	CHEVROLET
100	2017	CHEVROLET
403	2004	FORD
302	2005	CHEVROLET
212	2001	FORD
SERVICE TRAILER	2002	HAULMARK
PUBLIC ED TRAILER	2011	LOOK