

Annual Report



Logan-Rogersville Fire
Protection District
3427 S. State Highway 125
Rogersville, MO 65742
(417) 753-4265

Year 2018

**“Exceptional Service with
Compassion & Accountability”**

**LOGAN-ROGERVILLE FIRE
PROTECTION DISTRICT PERSONNEL**

DIRECTORS

Doug Climer, President
Jill Elsey-Stoner
Bryan Batey
David Adair
Joe Thomas

SECRETARY

Angela Carlberg

FIRE CHIEF

Richard Stirts, Jr.

DEPUTY CHIEF

Travis Trent

ASSISTANT CHIEFS

Russ Lafferty Tim Clarkson Robert Talburt

CAPTAINS

Ryan Turner
Matt Savage

Chris Wescoat
Grant Peters

Tom Cooksey
Lance Callahan

LIEUTENANTS

Chris Foley

Blane Bias

Nathan Blake

EQUIPMENT OPERATORS

Dan Gomes
Jesse Gearhart
Zach Creson

Susan Velier
John Brossman
Gary Helvey

Caleb Dishman
Cody Spencer

LOGAN-ROGERVILLE FIRE PROTECTION DISTRICT PERSONNEL

FIREFIGHTERS

Josh Grasinger	Joe Richter	David Driskell
Antonio Panetta	Jeff Larsen	Curtis Smith
Joel Krueger	Charles Wilder	Josh Donham
Jacob Stokes	Mark Hensley	Jordon Wilson
Zach Stirts	Dillon Low	Gerry Gillenwaters
Gregg Gillenwaters	Doug Crawford	Sam Gardner

CADETS

Drew Lammert Tyler Fagundas Will Sampietro

CHAPLAIN

Doug Thomas Blake Loveland

OLD TIMERS

Doug Climer, November 1983
Russ Lafferty, November 1986
Rich Stirts, May 1986
Travis Trent, August 1994
Rob Talburt, November 1994
Zachary Stirts, February 1999
Jill Elsey-Stoner, April 2000
Timothy Clarkson, October 2000
David Driskell, March 2001
Doug Thomas, July 2003
Lance Callahan, December 2004
Grant Peters, June 2006
Gerry Gillenwaters, July 2006
Angela Carlberg, October 2007
Blake Loveland, November 2007
Josh Donham, July 2009
Chris Wescoat, August 2010
Mark Hensley, March 2011

LOGAN-ROGERVILLE FIRE PROTECTION DISTRICT PERSONNEL

OLD TIMERS – Cont'd.

Ryan Turner, September 2012
Susan Velier, June 2013
Caleb Dishman, March 2014
Bryan Batey, May 2014
Charles Wilder, June 2014
Sam Gardner, September 2014
Jesse Gearhart, January 2015
Daniel Gomes, January 2015
Nathan Blake, January 2015
David Adair, May 2015
Matt Savage, May 2015
Joe Richter, November 2015
Joel Krueger, February 2016
Chris Foley, June 2016
Drew Lammert, June 2016
Dillon Low, July 2016
Jordon Wilson, February 2017
Blane Bias, March 2017
Gregg Gillenwaters, April 2017
Tyler Fagundas, April 2017
John Brossman, July 2017
Tom Cooksey, July 2018 (Jan '07-July '11)

ROOKIES

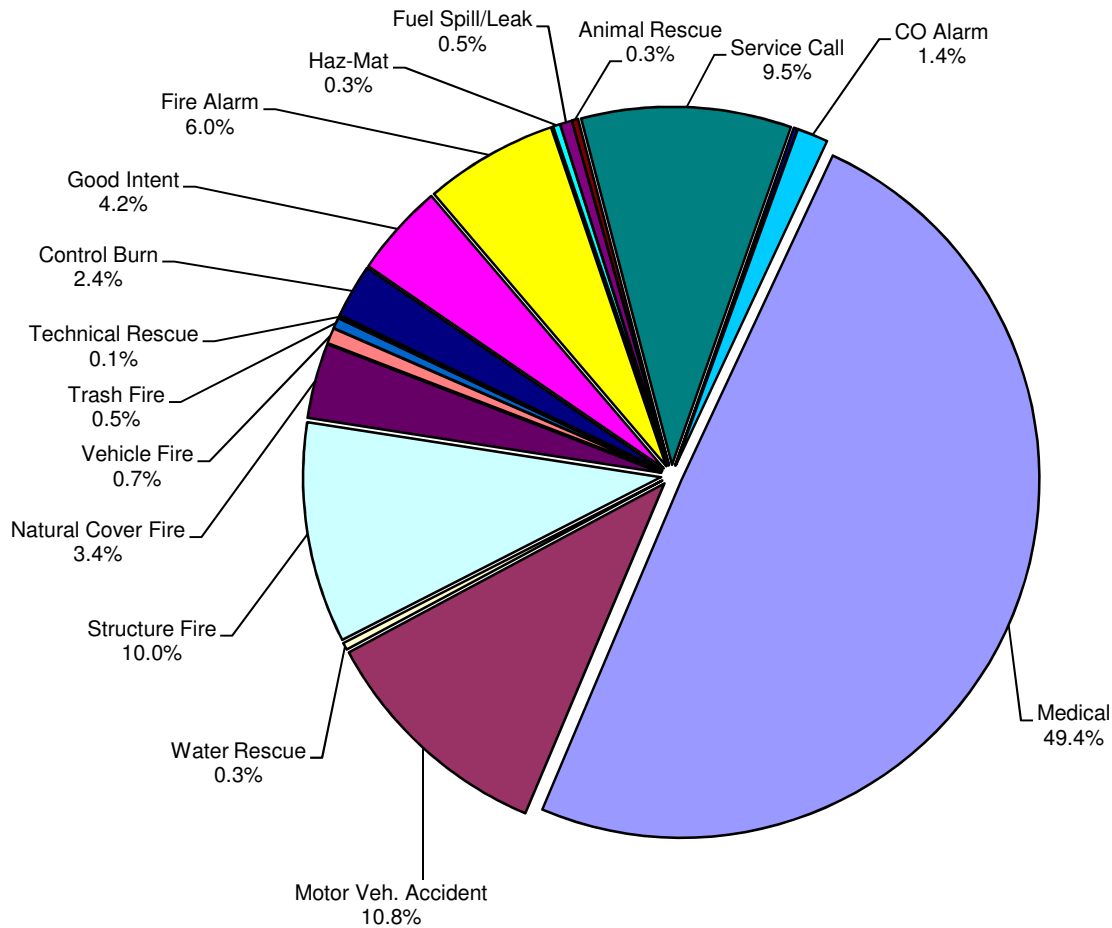
Cody Spencer, January 2018
Curtis Smith, January 2018
Joe Thomas, April 2018
Jacob Stokes, June 2018
Zach Creson, July 2018
Jeff Larsen, September 2018
Doug Crawford, September 2018
Antonio Panetta, September 2018
Josh Grasinger, November 2018
Gary Helvey, November 2018
Will Sampietro, November 2018



LOGAN-ROGERSVILLE FIRE PROTECTION DISTRICT

3427 South State Hwy 125
Rogersville, MO 65742
(417) 753-4265

TYPE AND NUMBER OF EMERGENCY CALLS RUN DURING THE YEAR OF 2018



Type	# of Calls	Percentage
Medical	918	49.4%
Motor Veh. Accident	201	10.8%
Water Rescue	6	0.3%
Structure Fire	185	10.0%
Natural Cover Fire	63	3.4%
Vehicle Fire	13	0.7%
Trash Fire	9	0.5%
Technical Rescue	2	0.1%
Control Burn	45	2.4%
Good Intent	78	4.2%
Fire Alarm	112	6.0%
Haz-Mat	6	0.3%
Fuel Spill/Leak	10	0.5%
Animal Rescue	5	0.3%
Service Call	176	9.5%
Missing Person	3	0.2%
CO Alarm	26	1.4%

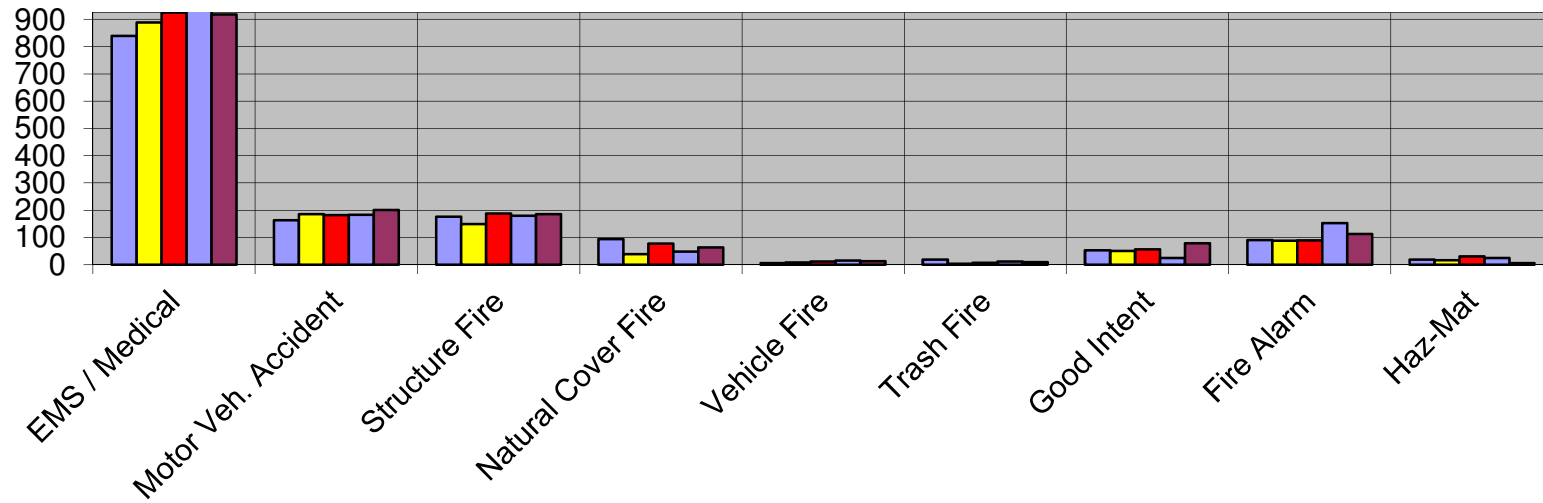
Total Number: 1858



LOGAN-ROGERSVILLE FIRE PROTECTION DISTRICT

3427 South State Hwy 125
Rogersville, MO 65742
(417) 753-4265

TYPE OF EMERGENCY CALLS PER YEAR > 2014 THROUGH 2018 <



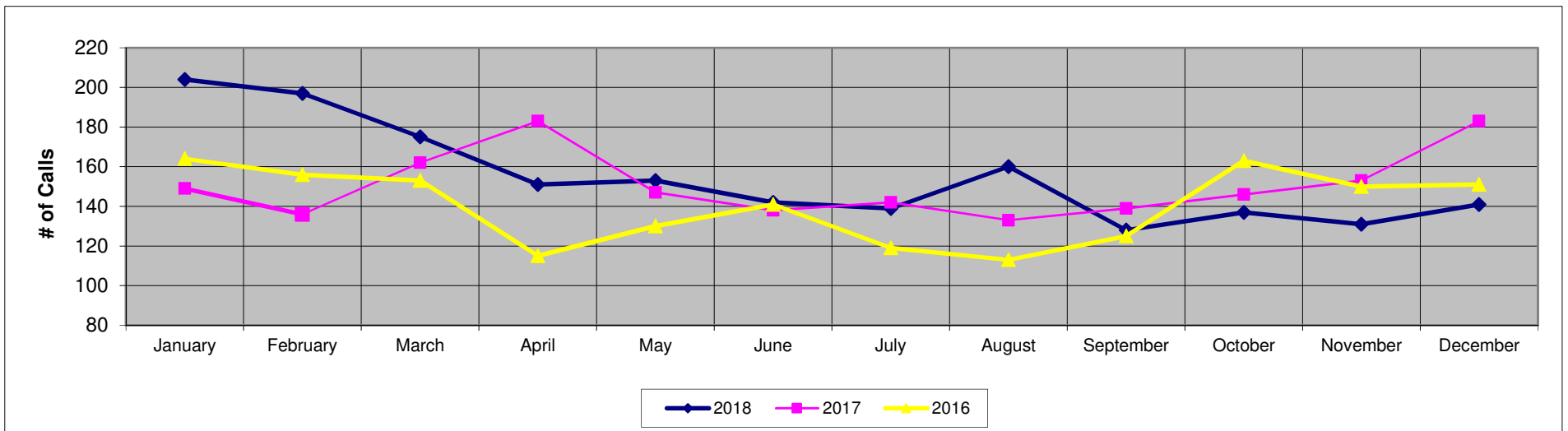
Type	2014	2015	2016	2017	2018
EMS / Medical	839	889	925	952	918
Motor Veh. Accident	163	185	182	183	201
Structure Fire	176	149	188	179	185
Natural Cover Fire	94	39	77	48	63
Vehicle Fire	6	8	12	15	13
Trash Fire	19	3	7	12	9
Good Intent	53	50	56	25	78
Fire Alarm	90	88	89	153	112
Haz-Mat	19	16	30	25	6



LOGAN-ROGERSVILLE FIRE PROTECTION DISTRICT

3427 South State Hwy 125
Rogersville, MO 65742
(417) 753-4265

NUMBER OF EMERGENCY CALLS PER MONTH > 2016 THROUGH 2018 <



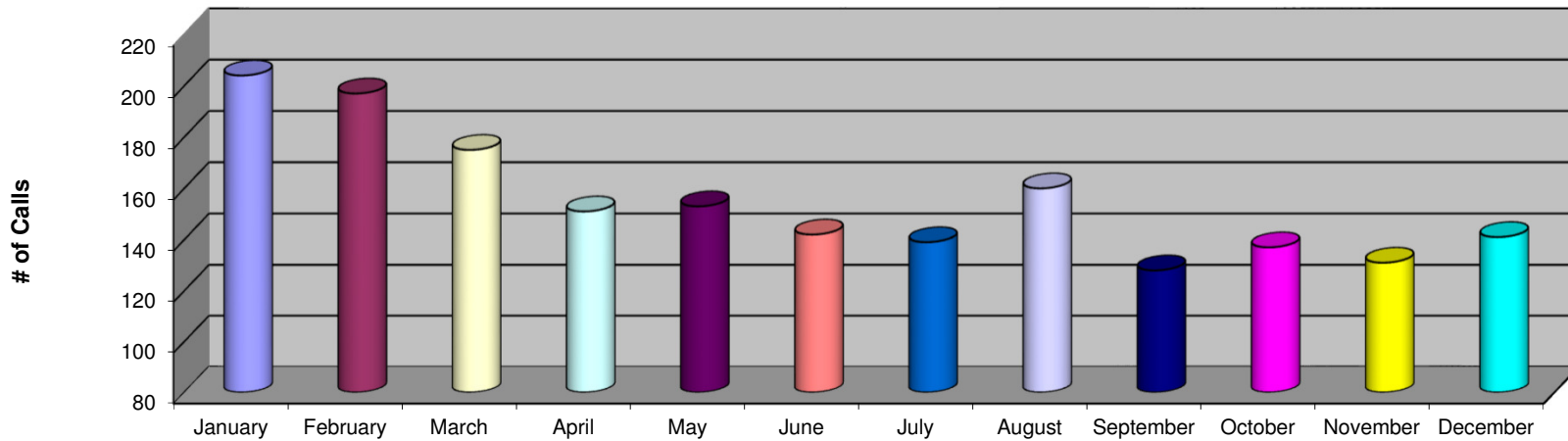
Month	2018	2017	2016
January	204	149	164
February	197	136	156
March	175	162	153
April	151	183	115
May	153	147	130
June	142	138	141
July	139	142	119
August	160	133	113
September	128	139	125
October	137	146	163
November	131	153	150
December	141	183	151



LOGAN-ROGERSVILLE FIRE PROTECTION DISTRICT

3427 South State Hwy 125
Rogersville, MO 65742
(417) 753-4265

NUMBER OF EMERGENCY CALLS PER MONTH DURING THE YEAR OF 2018



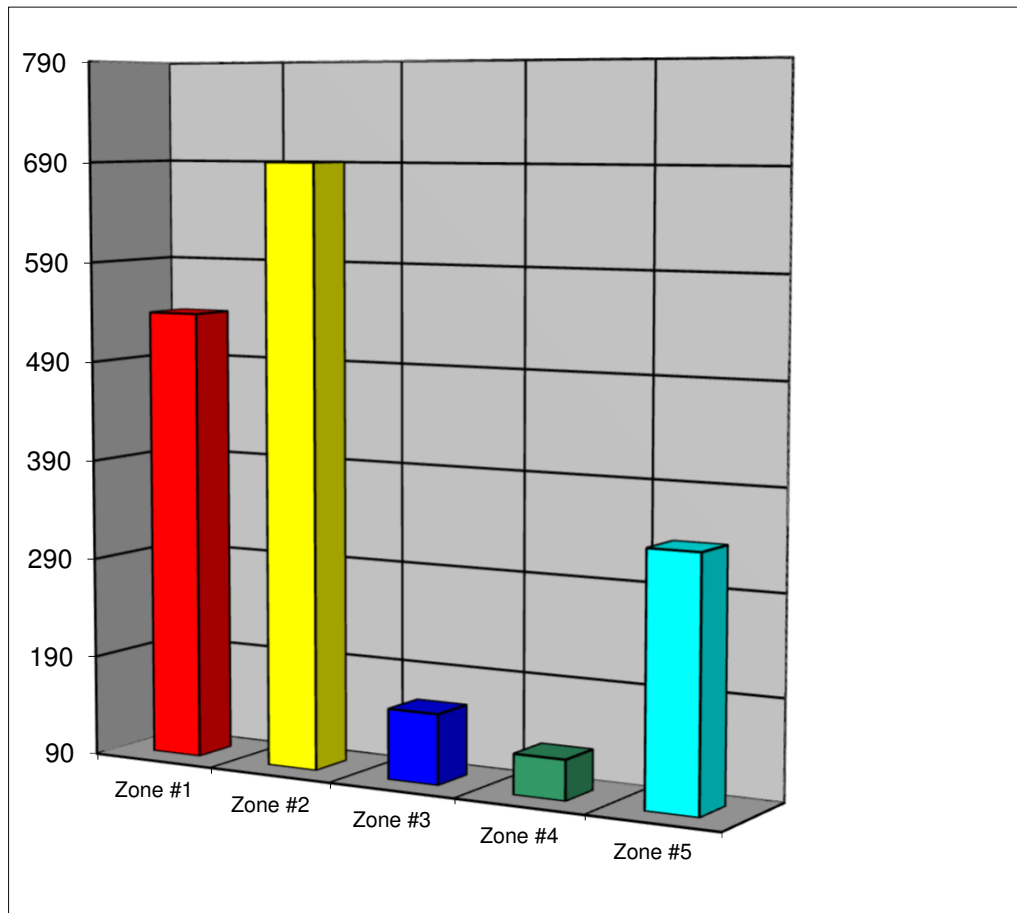
Month	2018
January	204
February	197
March	175
April	151
May	153
June	142
July	139
August	160
September	128
October	137
November	131
December	141



LOGAN-ROGERSVILLE FIRE PROTECTION DISTRICT

3427 South State Hwy 125
Rogersville, MO 65742
(417) 753-4265

EMERGENCY CALLS RUN PER STATION ZONE DURING THE YEAR OF 2018



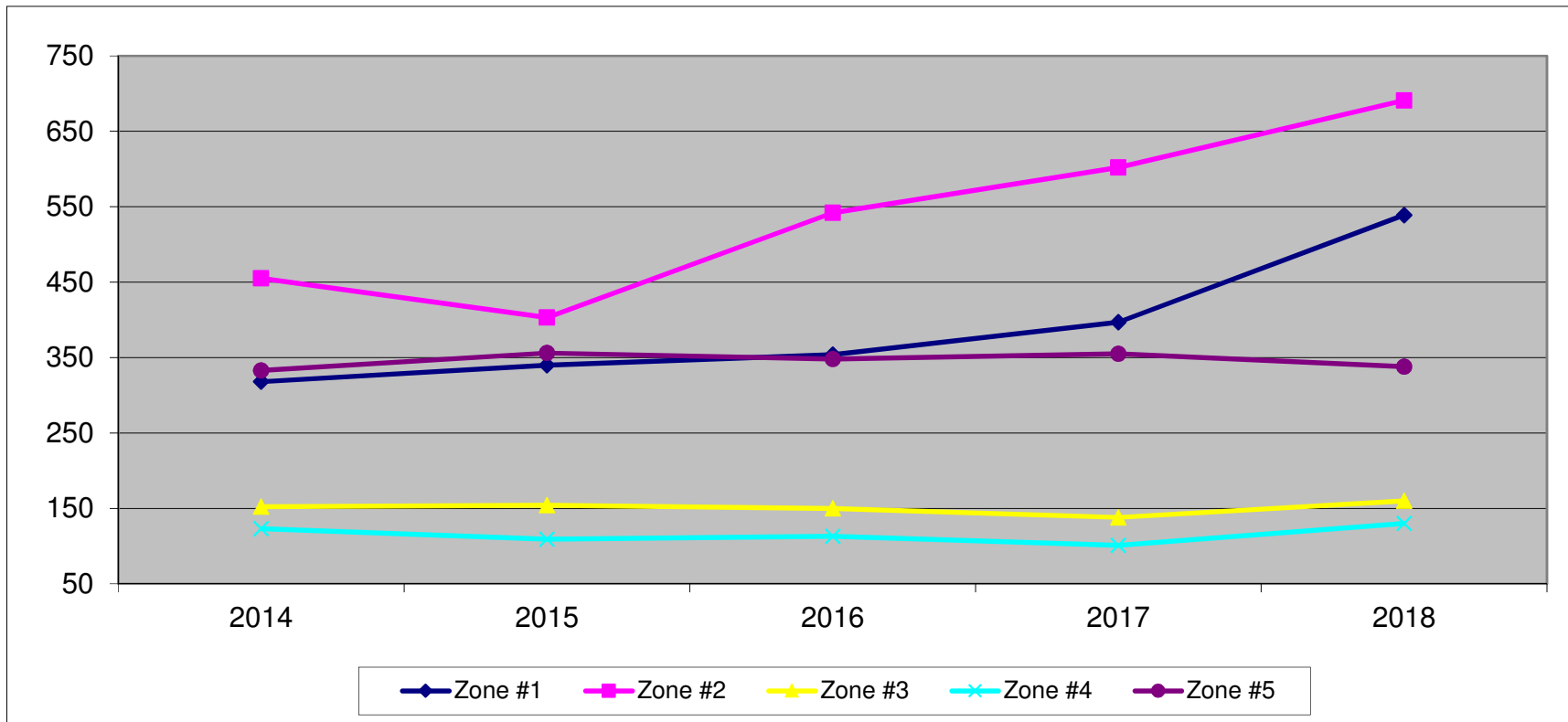
Totals				
Zone #1	Zone #2	Zone #3	Zone #4	Zone #5
539	691	160	130	338



LOGAN-ROGERSVILLE FIRE PROTECTION DISTRICT

3427 South State Hwy 125
Rogersville, MO 65742
(417) 753-4265

EMERGENCY CALLS RUN PER STATION ZONE > 2014 THROUGH 2018 <



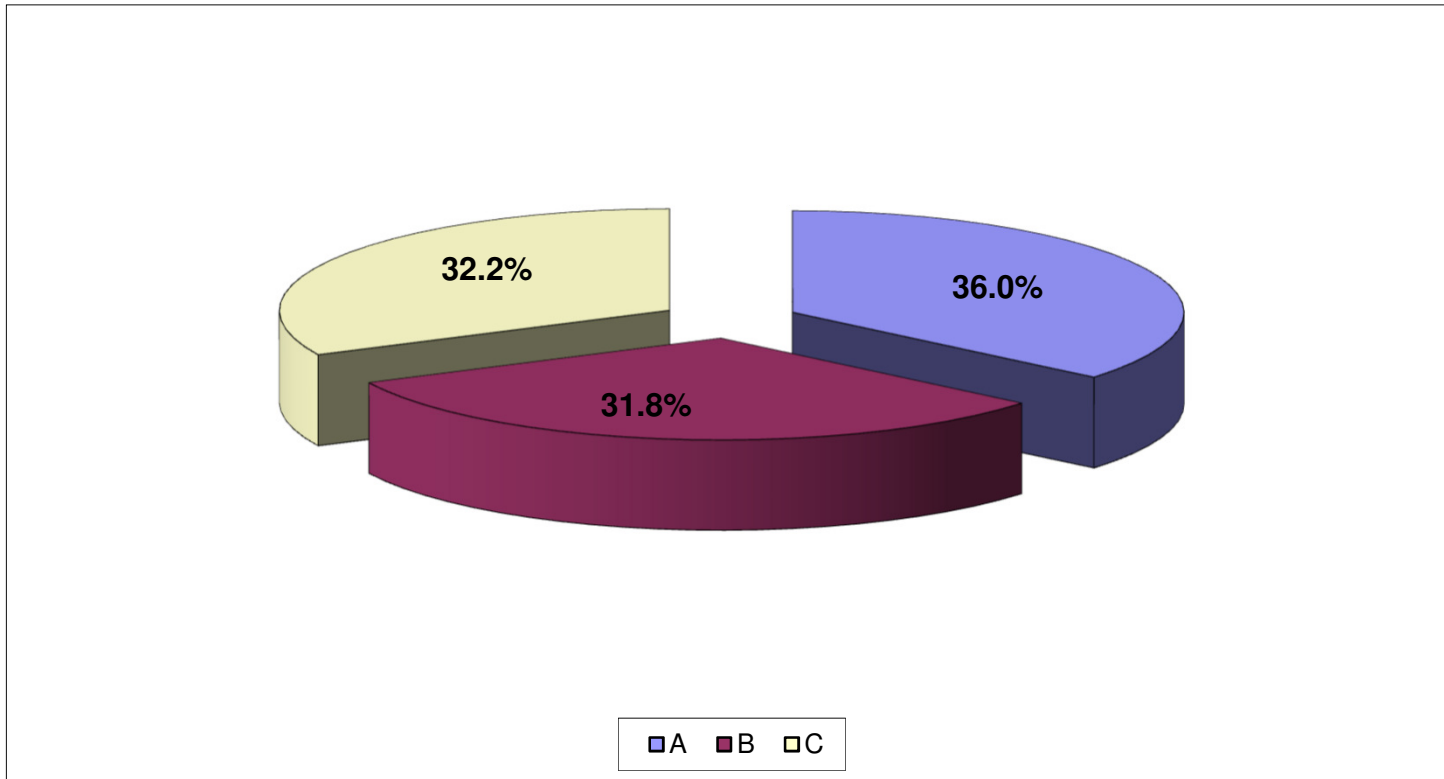
STATION ZONE	2014	2015	2016	2017	2018
Zone #1	318	340	354	397	539
Zone #2	455	403	542	602	691
Zone #3	152	154	150	138	160
Zone #4	123	109	113	101	130
Zone #5	333	356	348	355	338



LOGAN-ROGERSVILLE FIRE PROTECTION DISTRICT

3427 South State Hwy 125
Rogersville, MO 65742
(417) 753-4265

EMERGENCY CALLS RUN PER SHIFT DURING THE YEAR OF 2018



Shift	# of Calls	Percent
A	669	36.0%
B	591	31.8%
C	598	32.2%



LOGAN-ROGERSVILLE FIRE PROTECTION DISTRICT

3427 South State Hwy 125
Rogersville, MO 65742
(417) 753-4265

EMERGENCY CALLS RUN PER APPARATUS DURING THE YEAR OF 2018

Apparatus	2018	2017	2016	2015	2014	2013	2012	2011
Brush 223	0	291	319	227	249	198	159	19
Brush 321	0	17	42	78	51	32	73	83
Brush 422	0	42	60	11	73	31	40	51
Engine 334	0	65	56	129	95	71	64	13
Engine 435	0	14	53	130	144	88	110	82
Engine 132	0	484	177	0	0	0	0	0
Engine 233	0	629	388	496	600	748	903	697
Engine 584	0	51	299	404	391	689	709	568
Rescue 211	0	5	8	4	10	1	3	3
Service 403	0	659	595	594	517	492	530	316
Service 100	0	301	4	0	0	0	0	0
Car - 1	0	182	0	0	0	0	0	0
Car - 2	0	141	0	0	0	0	0	0
Insp - 1	0	46	0	0	0	0	0	0
Tanker 543	0	0	0	0	2	1	3	4
Tanker 142	0	41	32	29	49	38	50	53
Tanker 341	0	34	33	30	38	13	25	10
Tanker 444	0	0	0	0	0	0	0	0
Truck 151	0	13	8	7	13	5	6	7



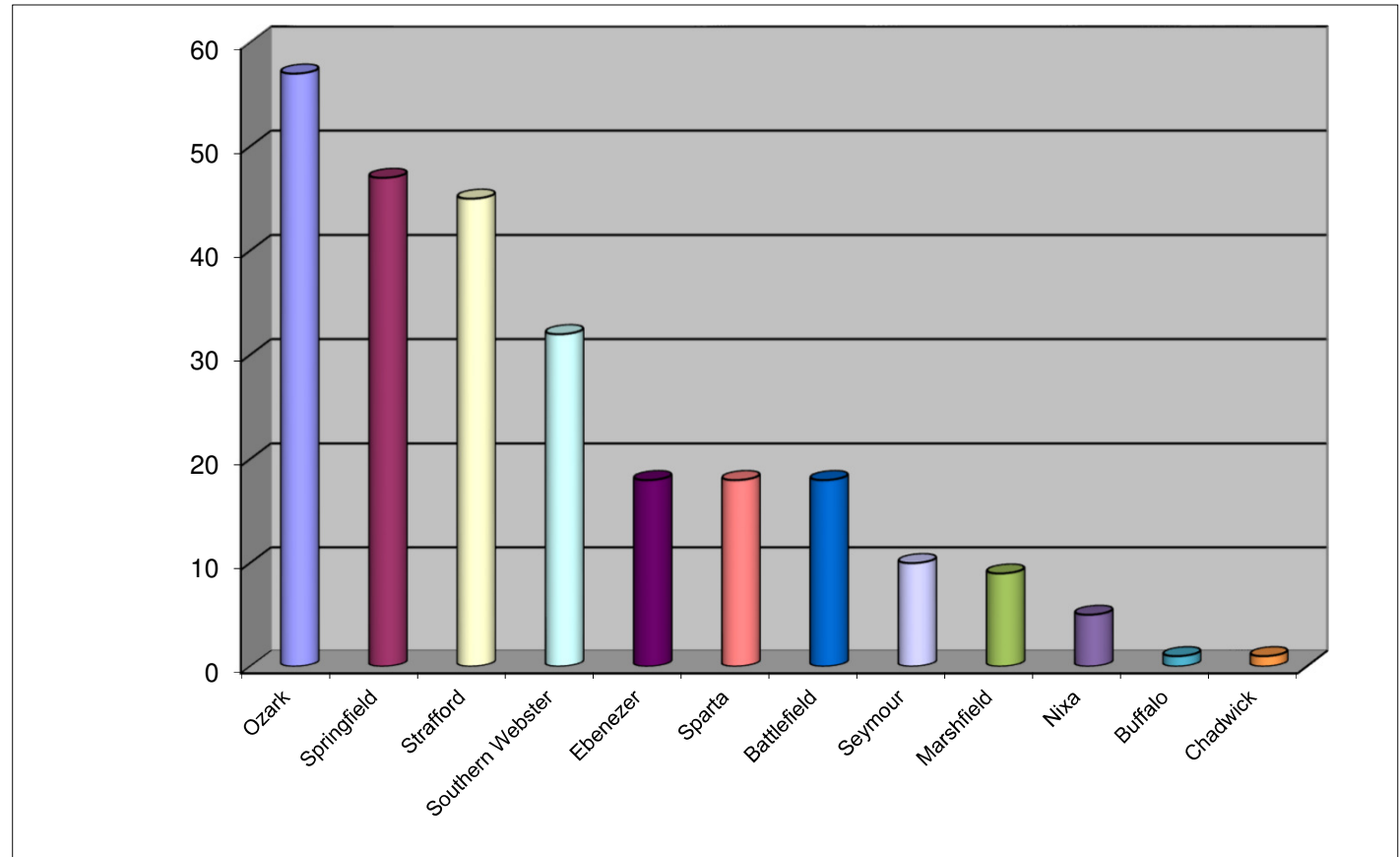
LOGAN-ROGERSVILLE FIRE PROTECTION DISTRICT

3427 South State Hwy 125
Rogersville, MO 65742
(417) 753-4265

NUMBER OF CALLS IN WHICH MUTUAL AID WAS PROVIDED DURING THE YEAR OF 2018

Departments That We Provided
Aid To During Year 2018:

Department	# of Calls
Ozark	57
Springfield	47
Strafford	45
Southern Webster	32
Ebenezer	18
Sparta	18
Battlefield	18
Seymour	10
Marshfield	9
Nixa	5
Buffalo	1
Chadwick	1
Total:	261





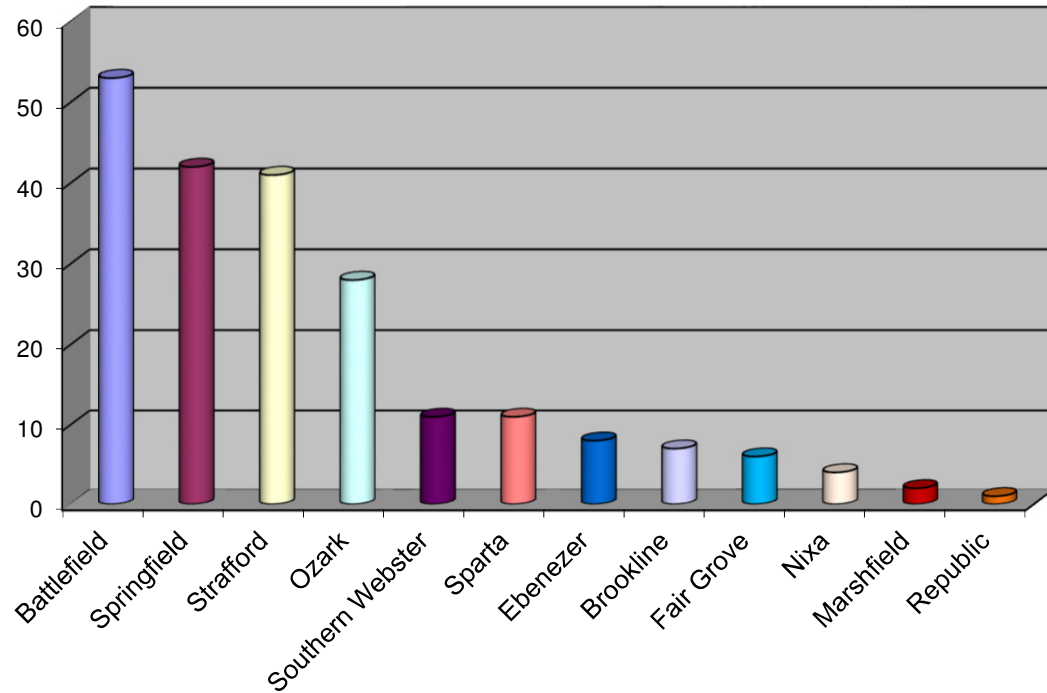
LOGAN-ROGERSVILLE FIRE PROTECTION DISTRICT

3427 South State Hwy 125
Rogersville, MO 65742
(417) 753-4265

NUMBER OF CALLS IN WHICH MUTUAL AID WAS RECEIVED DURING THE YEAR OF 2018

Departments That We Received
Aid From During Year 2018:

Department	# of Calls
Battlefield	53
Springfield	42
Strafford	41
Ozark	28
Southern Webster	11
Sparta	11
Ebenezer	8
Brookline	7
Fair Grove	6
Nixa	4
Marshfield	2
Republic	1
Total:	214

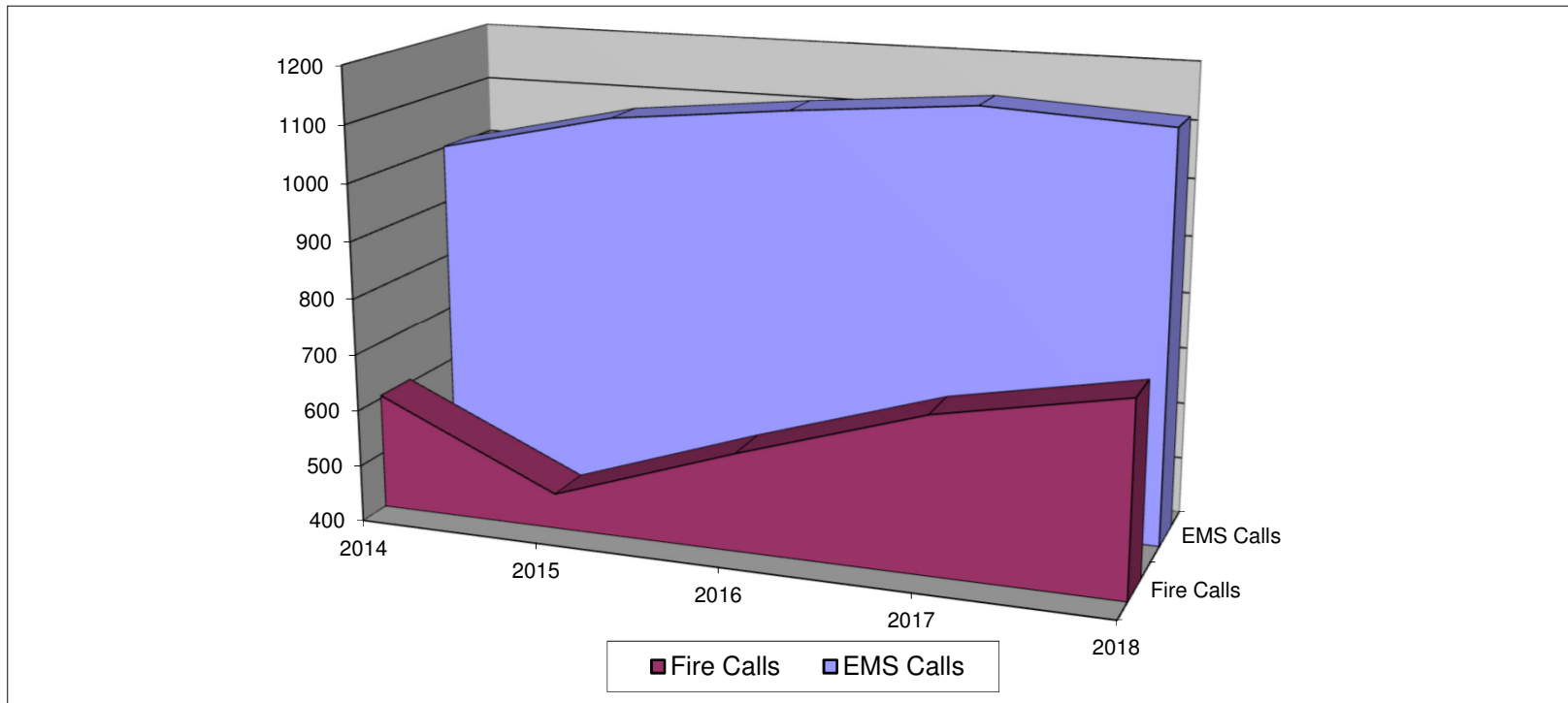




LOGAN-ROGERSVILLE FIRE PROTECTION DISTRICT

3427 South State Hwy 125
Rogersville, MO 65742
(417) 753-4265

TOTAL RESPONSE OF EMS VS. FIRE CALLS > 2014 THROUGH 2018 <



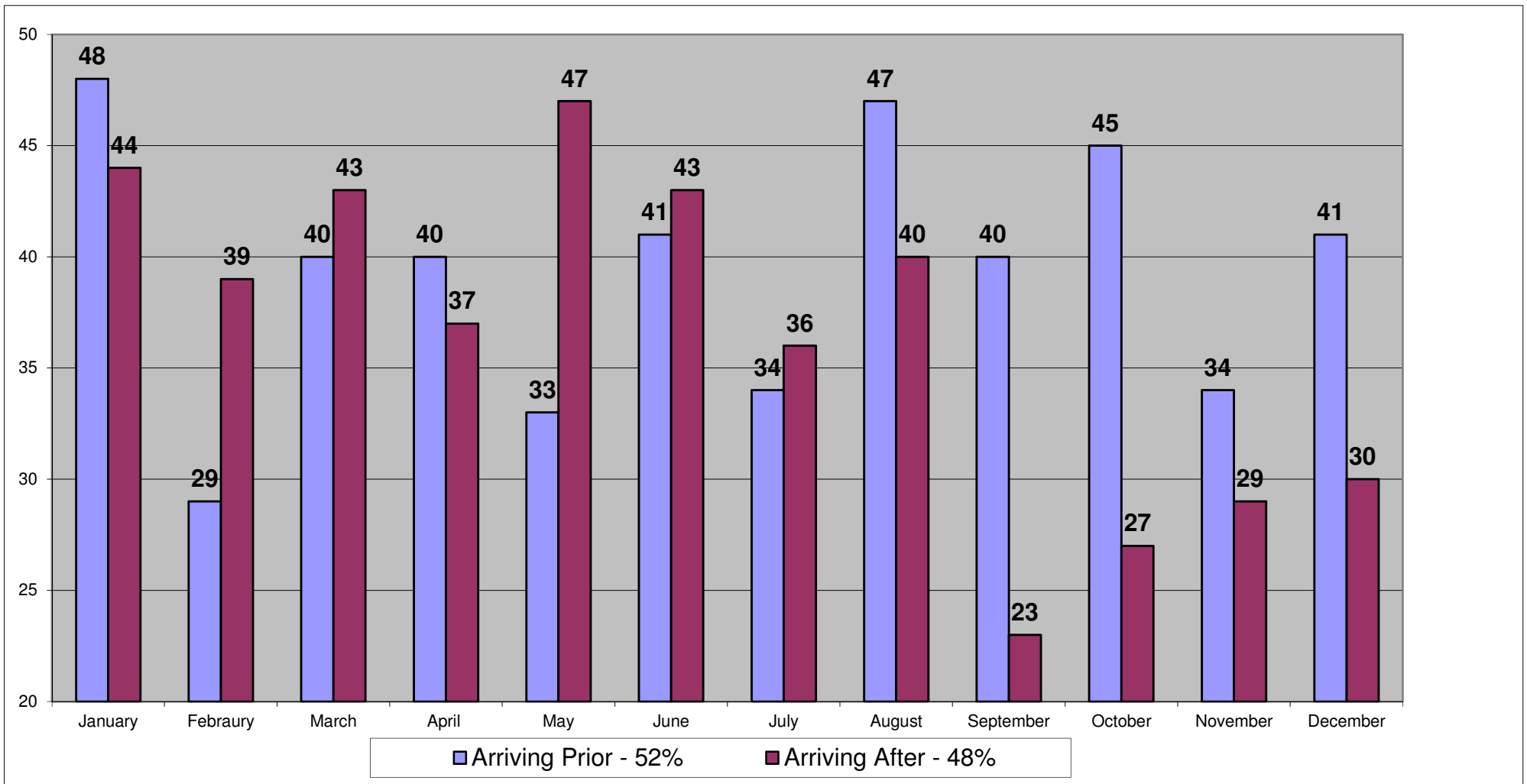
Year	2014		2015		2016		2017		2018	
	No. of EMS Calls	Percentage	No. of Fire Calls	Percentage	No. of EMS Calls	Percentage	No. of Fire Calls	Percentage	Total Calls Per Year	
2014	1002	62.4%	605	37.6%	1607					
2015	1074	69.9%	462	30.1%	1536					
2016	1107	65.9%	573	34.1%	1680					
2017	1135	62.7%	676	37.3%	1811					
2018	1119	60.2%	739	39.8%	1858					



LOGAN-ROGERSVILLE FIRE PROTECTION DISTRICT

3427 South State Hwy 125
Rogersville, MO 65742
(417) 753-4265

Fire Units Arriving Prior To Or After EMS > 2018 <





LOGAN-ROGERSVILLE FIRE PROTECTION DISTRICT

3427 South State Hwy 125
Rogersville, MO 65742
(417) 753-4265

Truck Maintenance Report 2018

	FUEL COST	REPAIR COST	TOTAL COST
B223	\$ 1,080.87	\$ 137.96	\$ 1,218.83
B321	\$ 452.95	\$ 722.03	\$ 1,174.98
B422	\$ 635.82	\$ -	\$ 635.82
CAR-1	\$ 4,137.08	\$ 1,803.64	\$ 5,940.72
CAR-2	\$ 4,814.44	\$ 2,059.40	\$ 6,873.84
INSP-1	\$ 2,073.99	\$ 4,064.54	\$ 6,138.53
S100	\$ 3,357.38	\$ 3,346.41	\$ 6,703.79
E435	\$ 251.28	\$ 723.45	\$ 974.73
E233	\$ 7,449.28	\$ 10,872.41	\$ 18,321.69
E334	\$ 406.05	\$ 673.48	\$ 1,079.53
E632	\$ 9,129.61	\$ 2,983.04	\$ 12,112.65
E584	\$ 1,341.63	\$ 634.18	\$ 1,975.81
R211	\$ 263.59	\$ 5,197.88	\$ 5,461.47
S621	\$ 2,881.16	\$ 8,373.05	\$ 11,254.21
S302	\$ 966.96	\$ 18.06	\$ 985.02
S201	\$ 59.64	\$ -	\$ 59.64
S212	\$ 638.05	\$ 119.89	\$ 757.94
T543	\$ -	\$ 299.91	\$ 299.91
T142	\$ 1,095.05	\$ 6,262.70	\$ 7,357.75
T341	\$ 389.44	\$ 1,555.93	\$ 1,945.37
T444	\$ 80.00	\$ 85.58	\$ 165.58
TK151	\$ 1,562.66	\$ 1,041.66	\$ 2,604.32
GATOR	\$ 10.51	\$ -	\$ 10.51
TOTAL	\$ 43,077.44	\$ 50,975.20	\$ 94,052.64



LOGAN-ROGERSVILLE FIRE PROTECTION DISTRICT

3427 South State Hwy 125
Rogersville, MO 65742
(417) 753-4265

Apparatus Summary For The Year 2018 APPARATUS SUMMARY

ENGINES	YEAR	MAKE
334	1992	FREIGHTLINER
435	2000	INTERNATIONAL
632	2016	KME PREDATOR
233	2010	KME PREDATOR
584	2006	KME PREDATOR
RESCUES	YEAR	MAKE
211	1995	INTERNATIONAL
BRUSH	YEAR	MAKE
422	2011	CHEVROLET
321	1993	FORD
621	2004	FORD
223	2015	FORD
TRUCK	YEAR	MAKE
151	2001	PIERCE DASH
TANKER	YEAR	MAKE
543	1987	GMC
142	1992	INTERNATIONAL
341	1996	INTERNATIONAL
SERVICE	YEAR	MAKE
CAR 1	2015	CHEVROLET
CAR 2	2015	CHEVROLET
INSP 1	2018	CHEVROLET
S-100	2017	CHEVROLET
302	2005	CHEVROLET
212	2009	CHEVROLET
SERVICE TRAILER	2002	HAULMARK
PUBLIC ED TRAILER	2011	LOOK