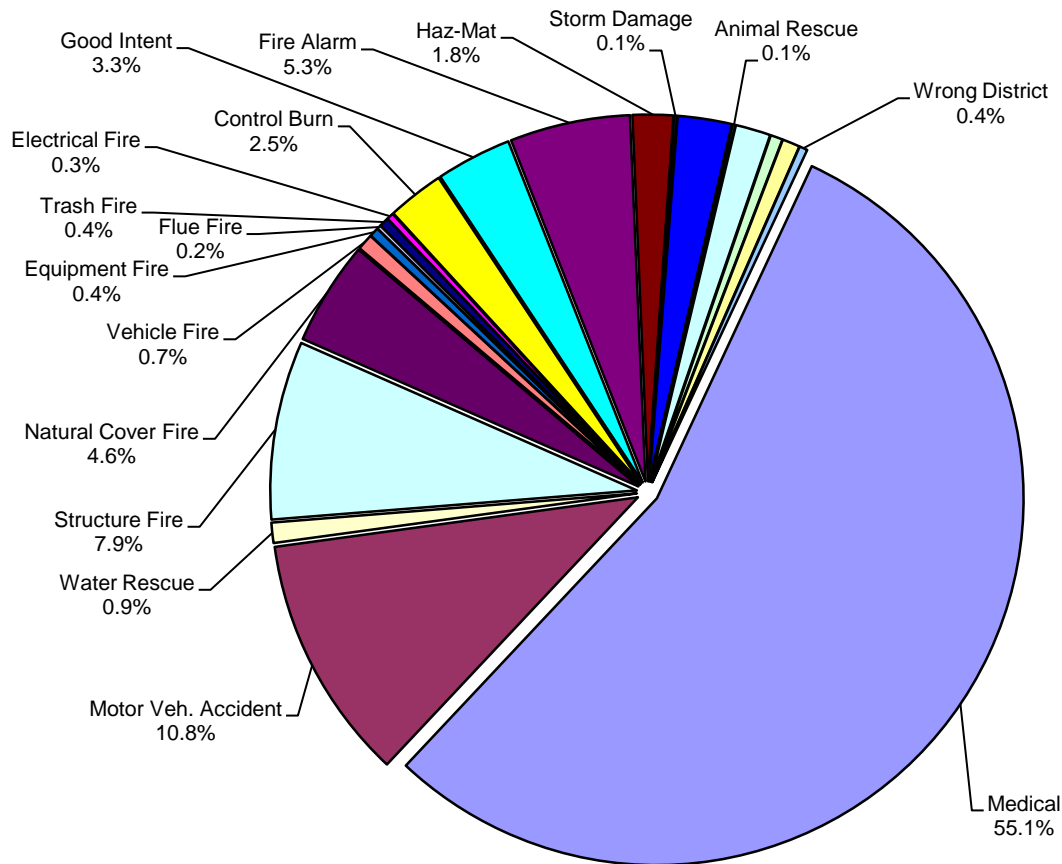




LOGAN-ROGERSVILLE FIRE PROTECTION DISTRICT

3427 South State Hwy 125
Rogersville, MO 65742
(417) 753-4265

TYPE AND NUMBER OF EMERGENCY CALLS RUN DURING THE YEAR OF 2016



Type	# of Calls	Percentage
Medical	925	55.1%
Motor Veh. Accident	182	10.8%
Water Rescue	15	0.9%
Structure Fire	132	7.9%
Natural Cover Fire	77	4.6%
Vehicle Fire	12	0.7%
Equipment Fire	7	0.4%
Flue Fire	3	0.2%
Trash Fire	7	0.4%
Electrical Fire	5	0.3%
Control Burn	42	2.5%
Good Intent	56	3.3%
Fire Alarm	89	5.3%
Haz-Mat	30	1.8%
Storm Damage	2	0.1%
Service Call	40	2.4%
Animal Rescue	2	0.1%
CO Alarm	26	1.5%
Assist Police Dept.	9	0.5%
District Coverage	13	0.8%
Wrong District	6	0.4%

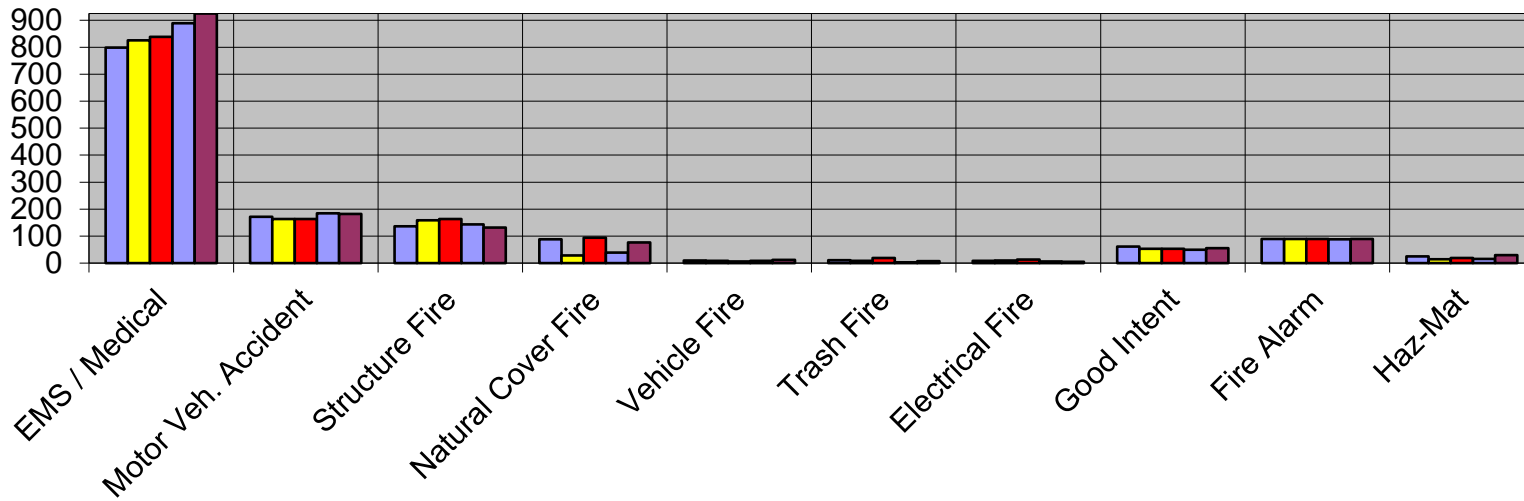
Total Number: 1680



LOGAN-ROGERSVILLE FIRE PROTECTION DISTRICT

3427 South State Hwy 125
Rogersville, MO 65742
(417) 753-4265

TYPE OF EMERGENCY CALLS PER YEAR > 2012 THROUGH 2016 <



■ 2012
 ■ 2013
 ■ 2014
 ■ 2015
 ■ 2016

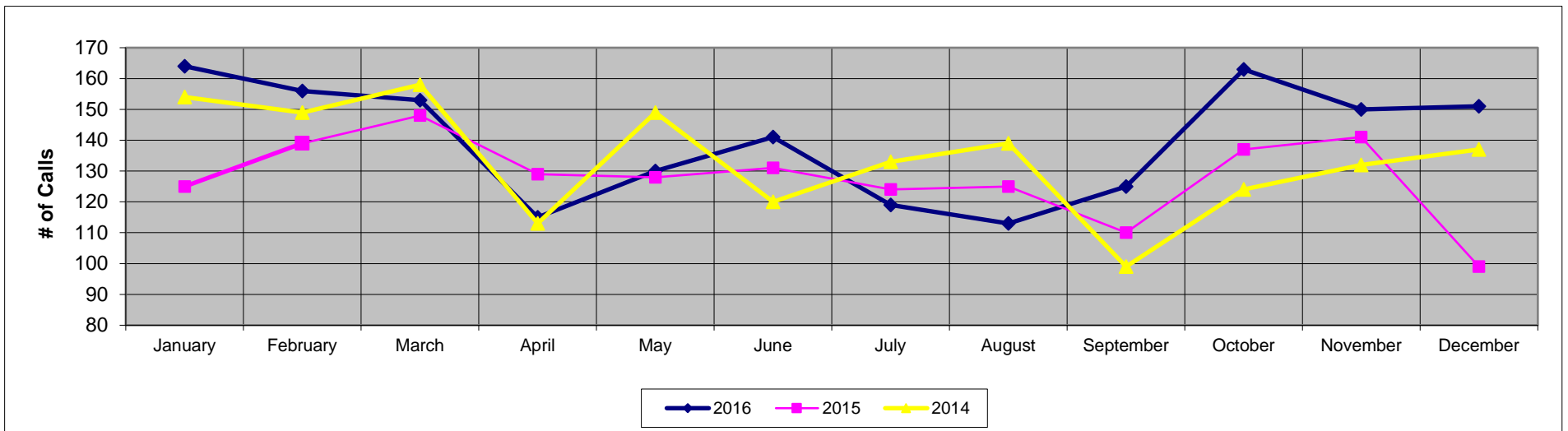
Type	2012	2013	2014	2015	2016
EMS / Medical	799	825	839	889	925
Motor Veh. Accident	172	164	163	185	182
Structure Fire	136	159	163	143	132
Natural Cover Fire	88	28	94	39	77
Vehicle Fire	10	8	6	8	12
Trash Fire	11	9	19	3	7
Electrical Fire	8	10	13	6	5
Good Intent	61	53	53	50	56
Fire Alarm	89	89	90	88	89
Haz-Mat	25	14	19	16	30



LOGAN-ROGERSVILLE FIRE PROTECTION DISTRICT

3427 South State Hwy 125
Rogersville, MO 65742
(417) 753-4265

NUMBER OF EMERGENCY CALLS PER MONTH > 2014 THROUGH 2016 <



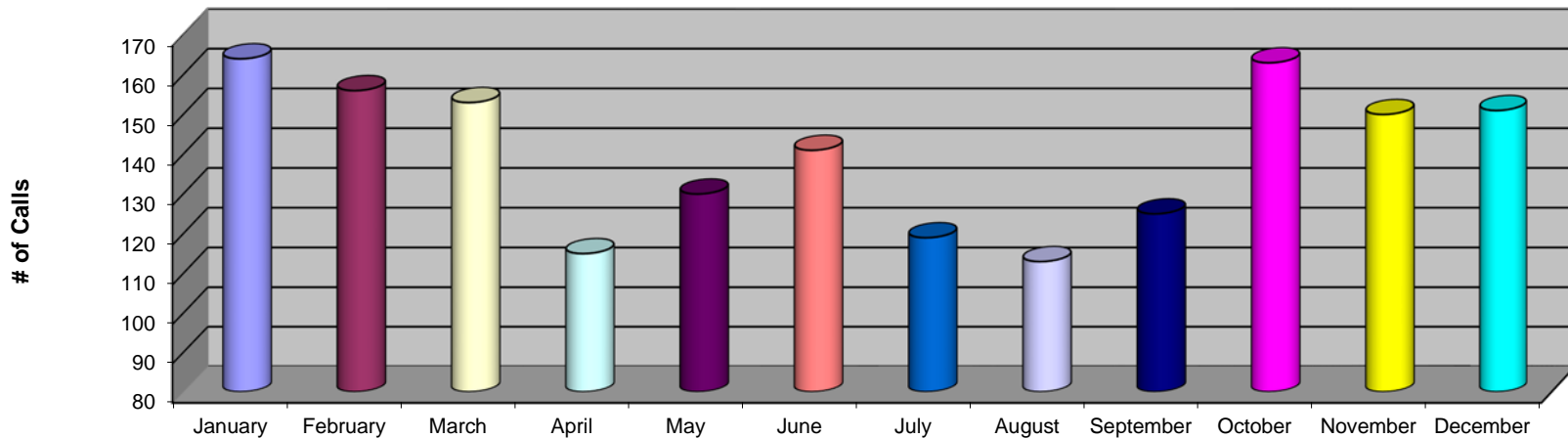
Month	2016	2015	2014
January	164	125	154
February	156	139	149
March	153	148	158
April	115	129	113
May	130	128	149
June	141	131	120
July	119	124	133
August	113	125	139
September	125	110	99
October	163	137	124
November	150	141	132
December	151	99	137



LOGAN-ROGERSVILLE FIRE PROTECTION DISTRICT

3427 South State Hwy 125
Rogersville, MO 65742
(417) 753-4265

NUMBER OF EMERGENCY CALLS PER MONTH DURING THE YEAR OF 2016



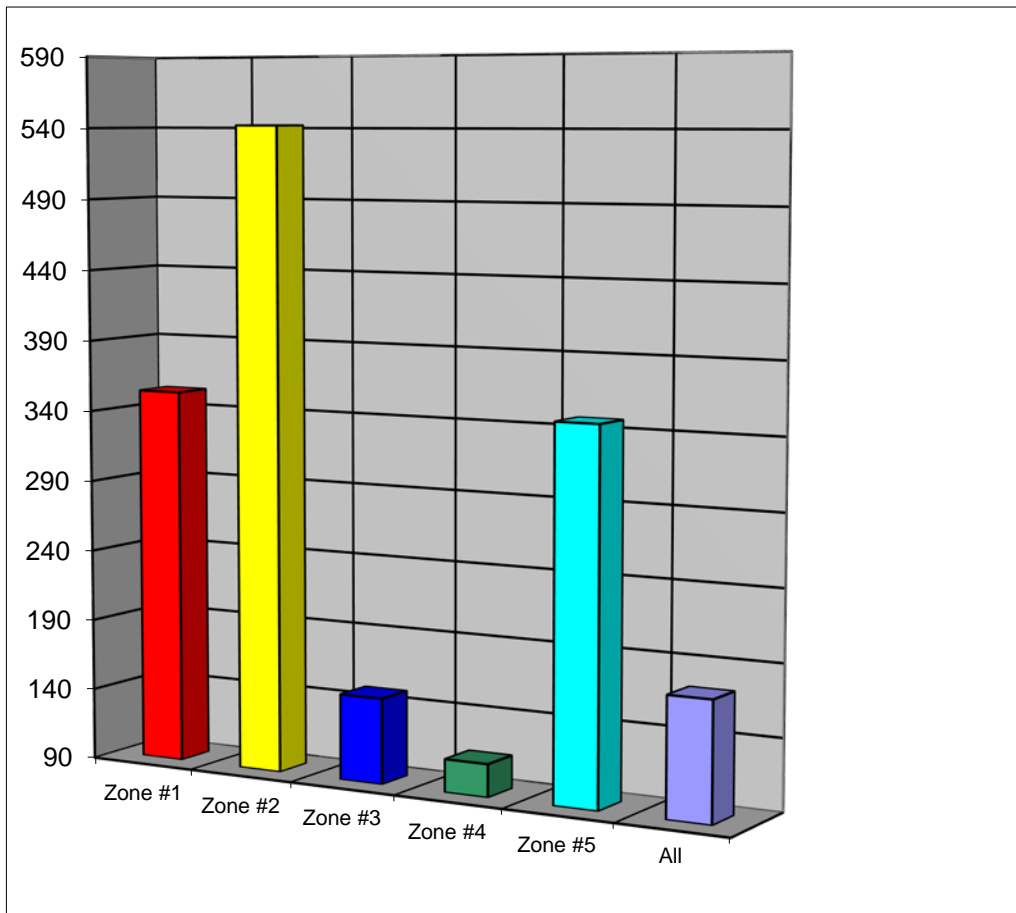
Month	2016
January	164
February	156
March	153
April	115
May	130
June	141
July	119
August	113
September	125
October	163
November	150
December	151



LOGAN-ROGERSVILLE FIRE PROTECTION DISTRICT

3427 South State Hwy 125
Rogersville, MO 65742
(417) 753-4265

EMERGENCY CALLS RUN PER STATION ZONE DURING THE YEAR OF 2016



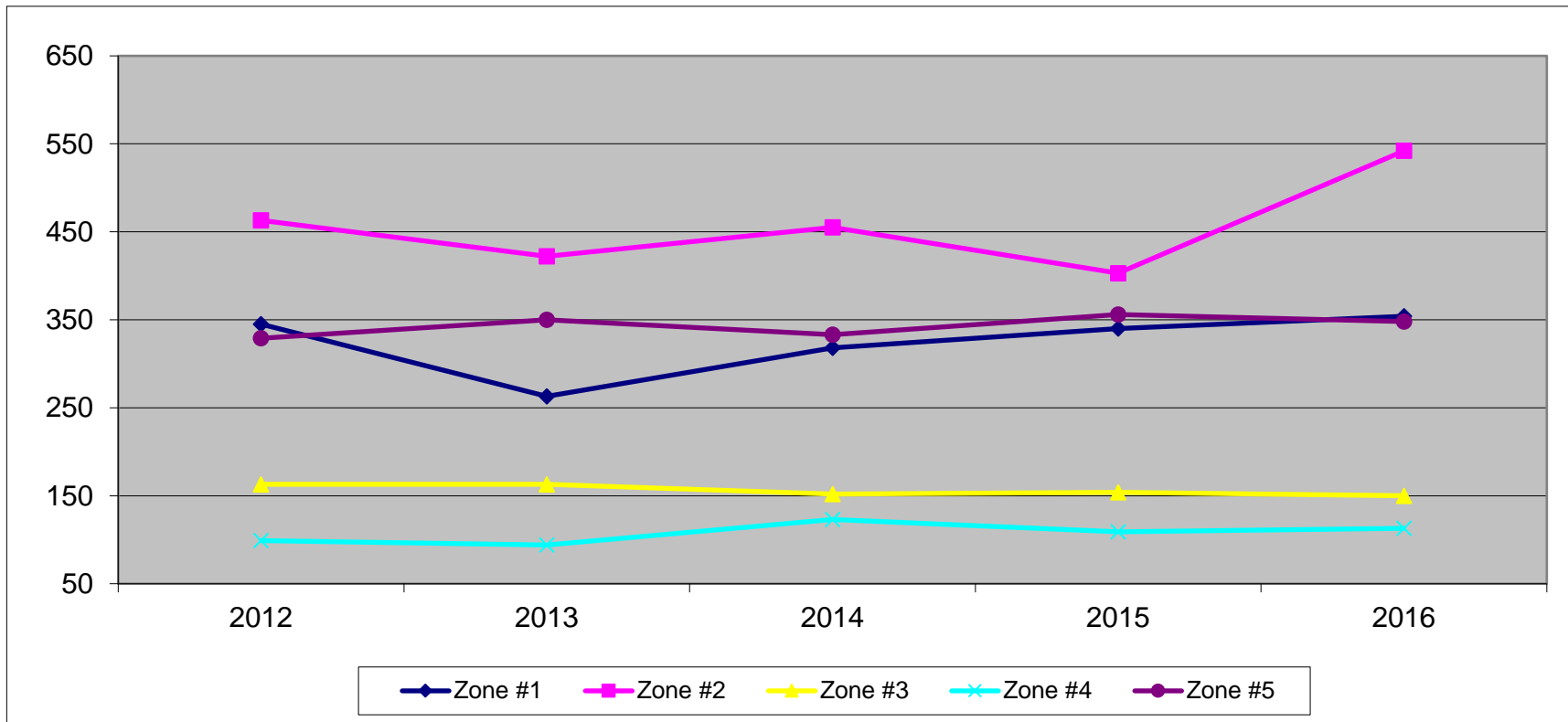
Totals					
Zone #1	Zone #2	Zone #3	Zone #4	Zone #5	All
354	542	150	113	348	173



LOGAN-ROGERSVILLE FIRE PROTECTION DISTRICT

3427 South State Hwy 125
Rogersville, MO 65742
(417) 753-4265

EMERGENCY CALLS RUN PER STATION ZONE > 2012 THROUGH 2016 <



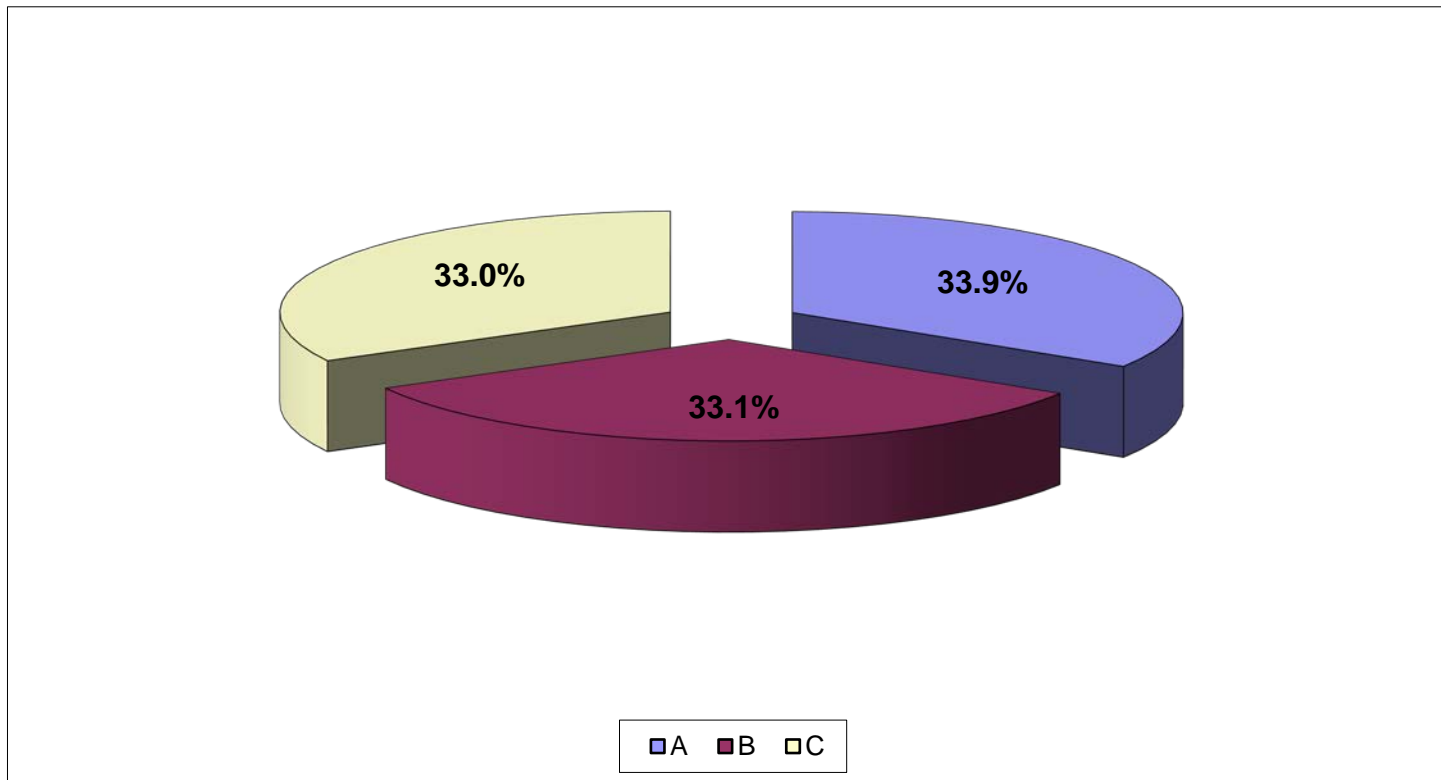
STATION ZONE	2012	2013	2014	2015	2016
Zone #1	345	263	318	340	354
Zone #2	463	422	455	403	542
Zone #3	163	163	152	154	150
Zone #4	99	94	123	109	113
Zone #5	329	350	333	356	348



LOGAN-ROGERSVILLE FIRE PROTECTION DISTRICT

3427 South State Hwy 125
Rogersville, MO 65742
(417) 753-4265

EMERGENCY CALLS RUN PER SHIFT DURING THE YEAR OF 2016



Shift	# of Calls	Percent
A	570	33.9%
B	556	33.1%
C	554	33.0%



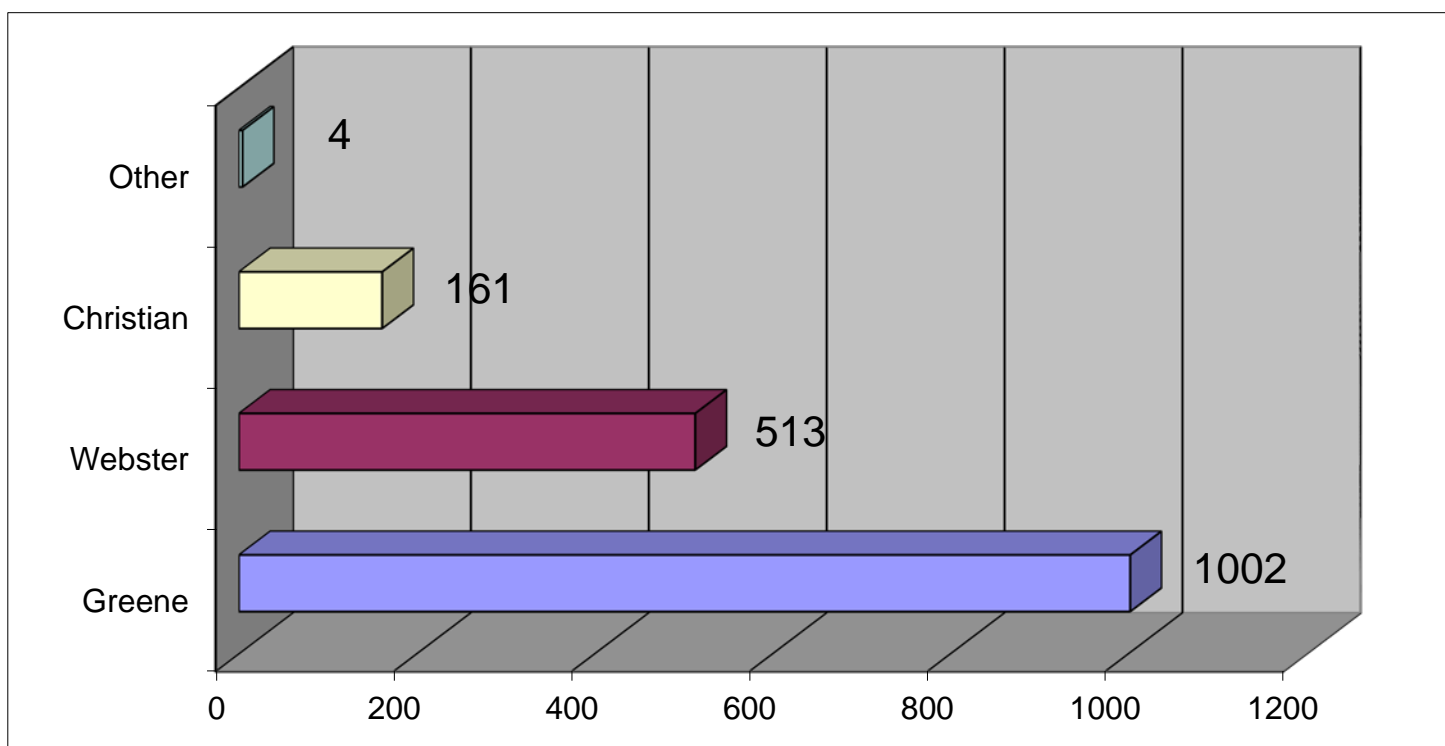
LOGAN-ROGERSVILLE FIRE PROTECTION DISTRICT

3427 South State Hwy 125

Rogersville, MO 65742

(417) 753-4265

EMERGENCY CALLS RUN PER COUNTY DURING THE YEAR OF 2016



County	# of Calls	Percent
Greene	1002	62.35%
Webster	513	31.92%
Christian	161	10.02%
Other	4	0.25%



LOGAN-ROGERSVILLE FIRE PROTECTION DISTRICT

3427 South State Hwy 125
Rogersville, MO 65742
(417) 753-4265

EMERGENCY CALLS RUN PER APPARATUS DURING THE YEAR OF 2016

Apparatus	2016	2015	2014	2013	2012	2011	2010	2009
Brush 223	319	227	249	198	159	19	14	29
Brush 321	42	78	51	32	73	83	40	84
Brush 422	60	11	73	31	40	51	44	103
Engine 334	56	129	95	71	64	13	8	22
Engine 435	53	130	144	88	110	82	54	384
Engine 132	177	0	0	0	0	0	0	0
Engine 233	388	496	600	748	903	697	724	262
Engine 531	0	4	3	0	1	0	5	5
Engine 584	299	404	391	689	709	568	595	547
Rescue 211	8	4	10	1	3	3	4	10
Service 403	595	594	517	492	530	316	282	324
Service 100	4	0	0	0	0	0	0	0
Service 302	281	320	412	412	451	386	343	308
Service 201	9	21	4	3	8	11	0	25
Tanker 543	0	0	2	1	3	4	11	7
Tanker 142	32	29	49	38	50	53	57	71
Tanker 341	33	30	38	13	25	10	23	31
Tanker 444	0	0	0	0	0	0	0	0
Truck 151	8	7	13	5	6	7	2	15



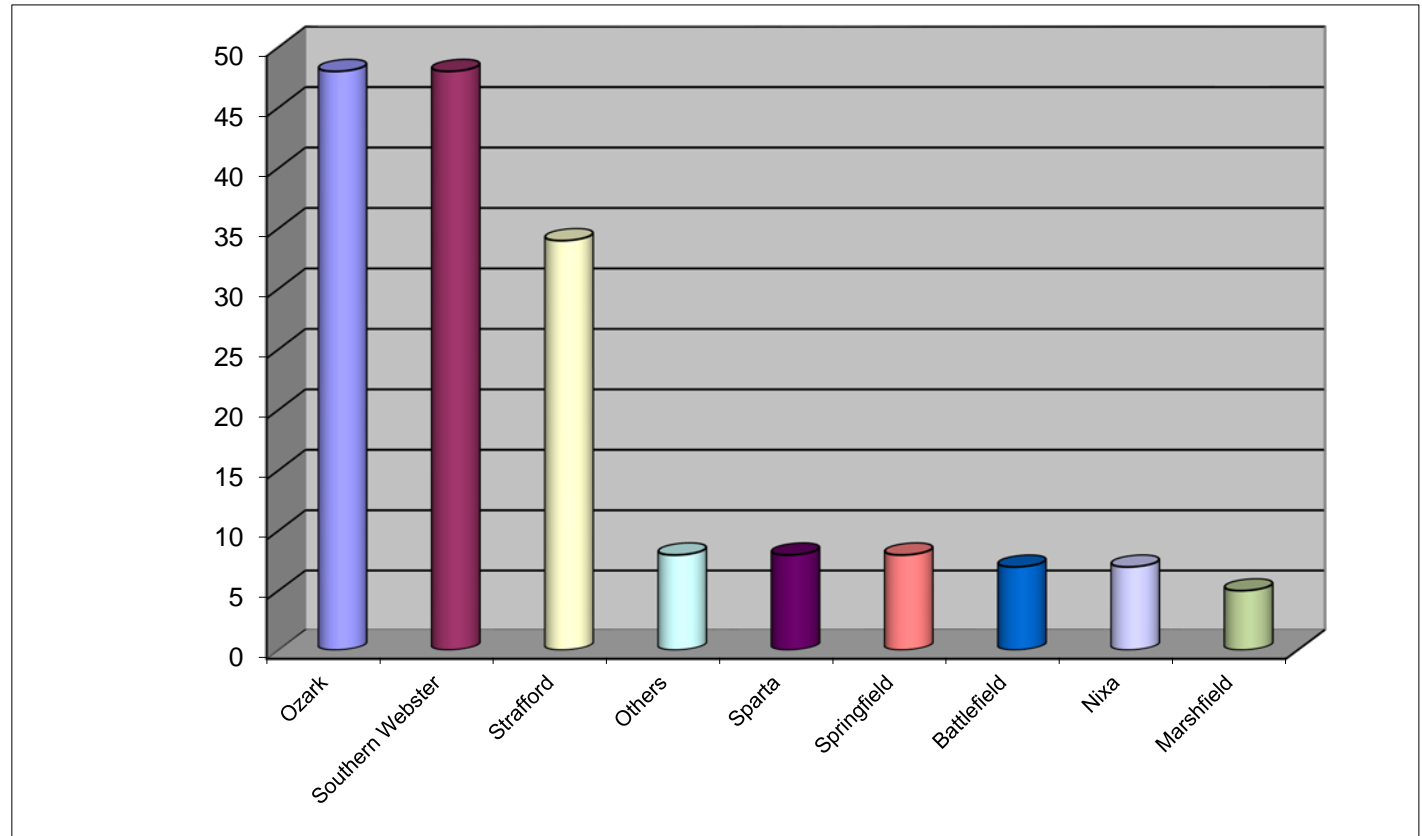
LOGAN-ROGERSVILLE FIRE PROTECTION DISTRICT

3427 South State Hwy 125
Rogersville, MO 65742
(417) 753-4265

NUMBER OF CALLS IN WHICH MUTUAL AID WAS PROVIDED DURING THE YEAR OF 2016

Departments That We Provided Aid To During Year 2016:

Department	# of Calls
Ozark	48
Southern Webster	48
Strafford	34
Others	8
Sparta	8
Springfield	8
Battlefield	7
Nixa	7
Marshfield	5
Total:	173





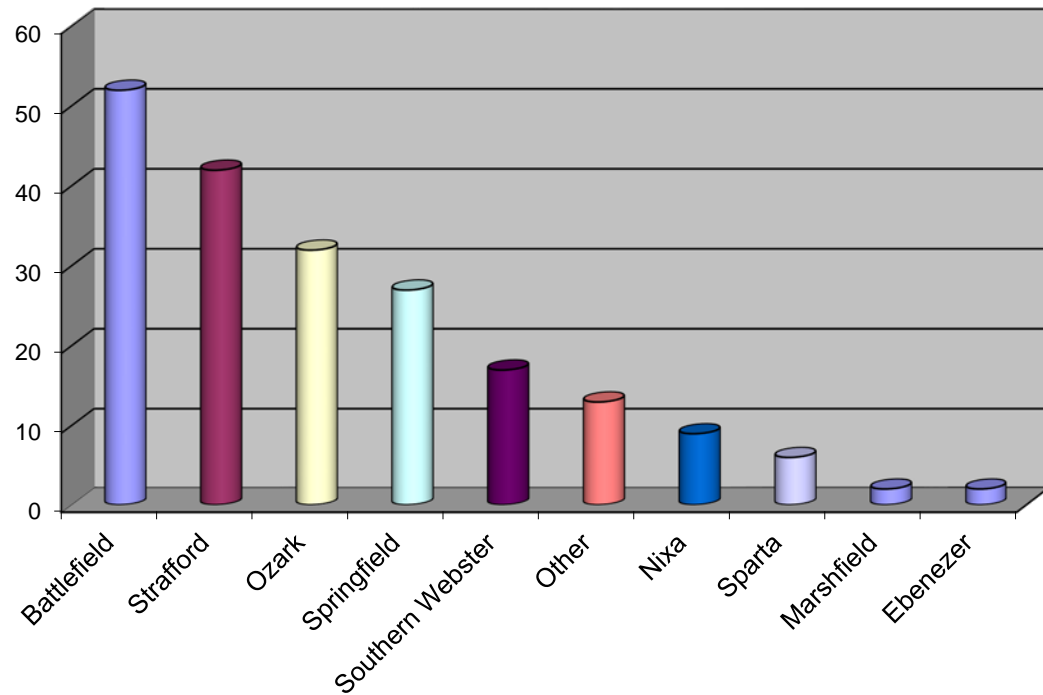
LOGAN-ROGERSVILLE FIRE PROTECTION DISTRICT

3427 South State Hwy 125
Rogersville, MO 65742
(417) 753-4265

NUMBER OF CALLS IN WHICH MUTUAL AID WAS RECEIVED DURING THE YEAR OF 2016

Departments That We Received
Aid From During Year 2016:

Department	# of Calls
Battlefield	52
Strafford	42
Ozark	32
Springfield	27
Southern Webster	17
Other	13
Nixa	9
Sparta	6
Marshfield	2
Ebenezer	2
Total:	202

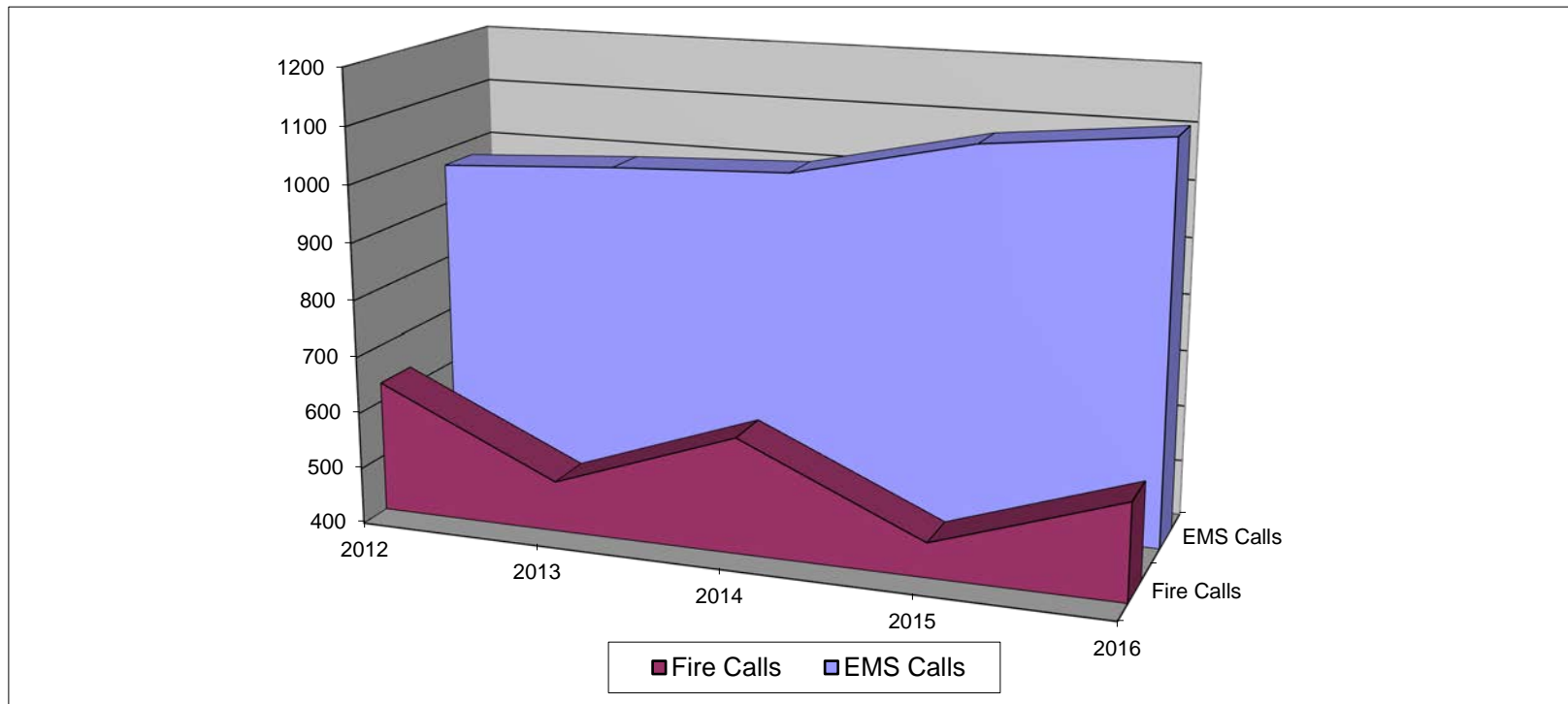




LOGAN-ROGERSVILLE FIRE PROTECTION DISTRICT

3427 South State Hwy 125
Rogersville, MO 65742
(417) 753-4265

TOTAL RESPONSE OF EMS VS. FIRE CALLS > 2012 THROUGH 2016 <



Year	No. of		No. of		Total Calls Per Year
	EMS Calls	Percentage	Fire Calls	Percentage	
2012	971	60.5%	633	39.5%	1604
2013	989	66.9%	489	33.1%	1478
2014	1002	62.4%	605	37.6%	1607
2015	1074	69.9%	462	30.1%	1536
2016	1107	65.9%	573	34.1%	1680



LOGAN-ROGERSVILLE FIRE PROTECTION DISTRICT

3427 South State Hwy 125
Rogersville, MO 65742
(417) 753-4265

Truck Maintenance Report 2016

	FUEL COST	REPAIR COST	TOTAL COST
B223	\$ 972.28	\$ 864.97	\$ 1,837.25
B321	\$ 293.66	\$ -	\$ 293.66
B422	\$ 394.10	\$ 197.29	\$ 591.39
CAR-1	\$ 3,015.54	\$ 1,758.96	\$ 4,774.50
CAR-2	\$ 3,162.72	\$ 2,089.16	\$ 5,251.88
INSP-1	\$ 1,961.15	\$ 1,997.45	\$ 3,958.60
E435	\$ 6,163.26	\$ 1,155.52	\$ 7,318.78
E233	\$ 5,226.85	\$ 18,741.96	\$ 23,968.81
E531	\$ 43.00	\$ 1,133.47	\$ 1,176.47
E334	\$ 256.39	\$ 967.17	\$ 1,223.56
E132	\$ 2,267.70	\$ 5,138.95	\$ 7,406.65
E584	\$ 5,623.39	\$ 6,475.89	\$ 12,099.28
R211	\$ 283.99	\$ 3,031.57	\$ 3,315.56
S403	\$ 1,989.19	\$ 1,520.77	\$ 3,509.96
S302	\$ 2,289.97	\$ 1,920.79	\$ 4,210.76
S201	\$ 625.80	\$ 1,777.40	\$ 2,403.20
S212	\$ 955.34	\$ 42.66	\$ 998.00
T543	\$ -	\$ -	\$ -
T142	\$ 607.10	\$ 1,857.85	\$ 2,464.95
T341	\$ 389.89	\$ 661.97	\$ 1,051.86
T444	\$ -	\$ -	\$ -
TK151	\$ 699.77	\$ 31,116.04	\$ 31,815.81
GATOR	\$ -	\$ 40.60	\$ 40.60
TOTAL	\$ 37,221.09	\$ 82,490.44	\$ 119,711.53



LOGAN-ROGERSVILLE FIRE PROTECTION DISTRICT

3427 South State Hwy 125
Rogersville, MO 65742
(417) 753-4265

Apparatus Summary For The Year 2016 APPARATUS SUMMARY

ENGINES	YEAR	MAKE
334	1992	FREIGHTLINER
435	2000	INTERNATIONAL
132	2016	KME PREDATOR
233	2010	KME PREDATOR
584	2006	KME PREDATOR
531	1973	FORD
RESCUES	YEAR	MAKE
211	1995	INTERNATIONAL
BRUSH	YEAR	MAKE
422	2011	CHEVROLET
321	1993	FORD
223	2015	FORD
TRUCK	YEAR	MAKE
151	2001	PIERCE DASH
TANKER	YEAR	MAKE
543	1987	GMC
142	1992	INTERNATIONAL
341	1996	INTERNATIONAL
444	1971	GMC
SERVICE	YEAR	MAKE
CAR 1	2015	CHEVROLET
CAR 2	2015	CHEVROLET
INSP 1	2009	CHEVROLET
100	2017	CHEVROLET
403	2004	FORD
302	2005	CHEVROLET
201	2005	FORD
212	2001	FORD
SERVICE TRAILER	2002	HAULMARK
PUBLIC ED TRAILER	2011	LOOK