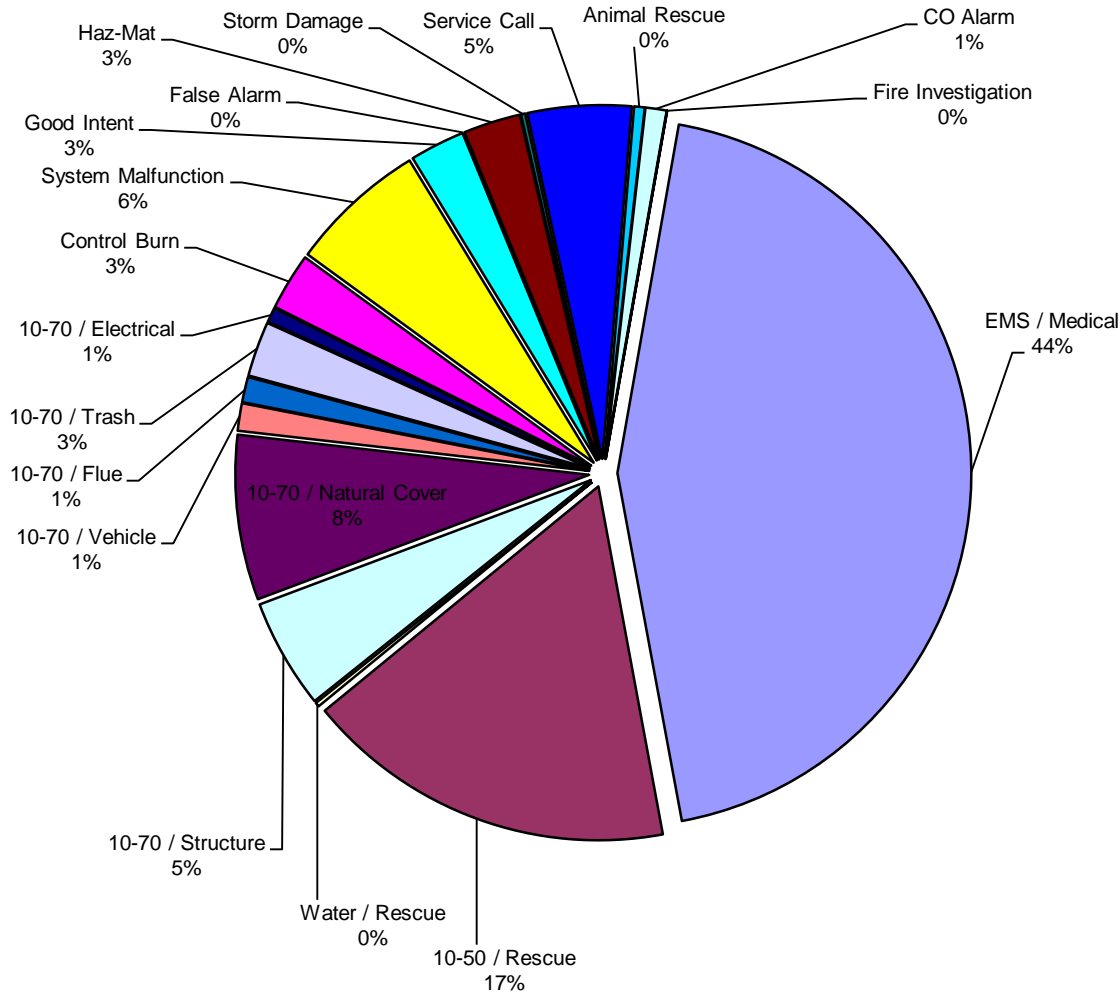




LOGAN-ROGERSVILLE FIRE PROTECTION DISTRICT

3427 South State Hwy 125
Rogersville, MO 65742
(417) 753-4265

TYPE AND NUMBER OF EMERGENCY CALLS RUN DURING THE YEAR OF 2004



Type	# of Calls	Percentage
EMS / Medical	459	43.6%
10-50 / Rescue	176	16.7%
Water / Rescue	2	0.2%
10-70 / Structure	52	4.9%
10-70 / Natural Cover	78	7.4%
10-70 / Vehicle	13	1.2%
10-70 / Flue	12	1.1%
10-70 / Trash	26	2.5%
10-70 / Electrical	7	0.7%
Control Burn	27	2.6%
System Malfunction	65	6.2%
Good Intent	26	2.5%
False Alarm	0	0.0%
Haz-Mat	27	2.6%
Storm Damage	2	0.2%
Service Call	49	4.7%
Animal Rescue	5	0.5%
CO Alarm	10	0.9%
Fire Investigation	0	0.0%
Assist Police Dept.	11	1.0%
Weather Watch	3	0.3%
Bomb Scare	1	0.1%
Air Plane Crash	1	0.1%
Wrong District	1	0.1%

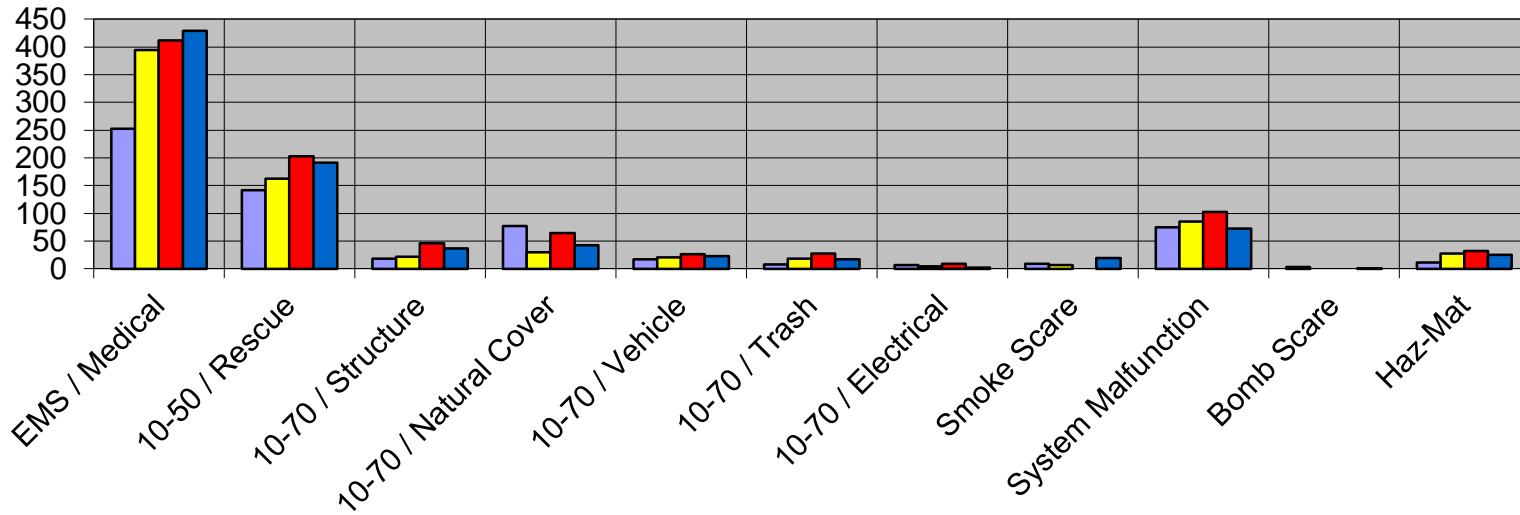
Total Number: 1053



LOGAN-ROGERSVILLE FIRE PROTECTION DISTRICT

3427 South State Hwy 125
Rogersville, MO 65742
(417) 753-4265

TYPE OF EMERGENCY CALLS PER YEAR > 2000 THROUGH 2004 <



■ 2000 ■ 2001 ■ 2002 ■ 2004

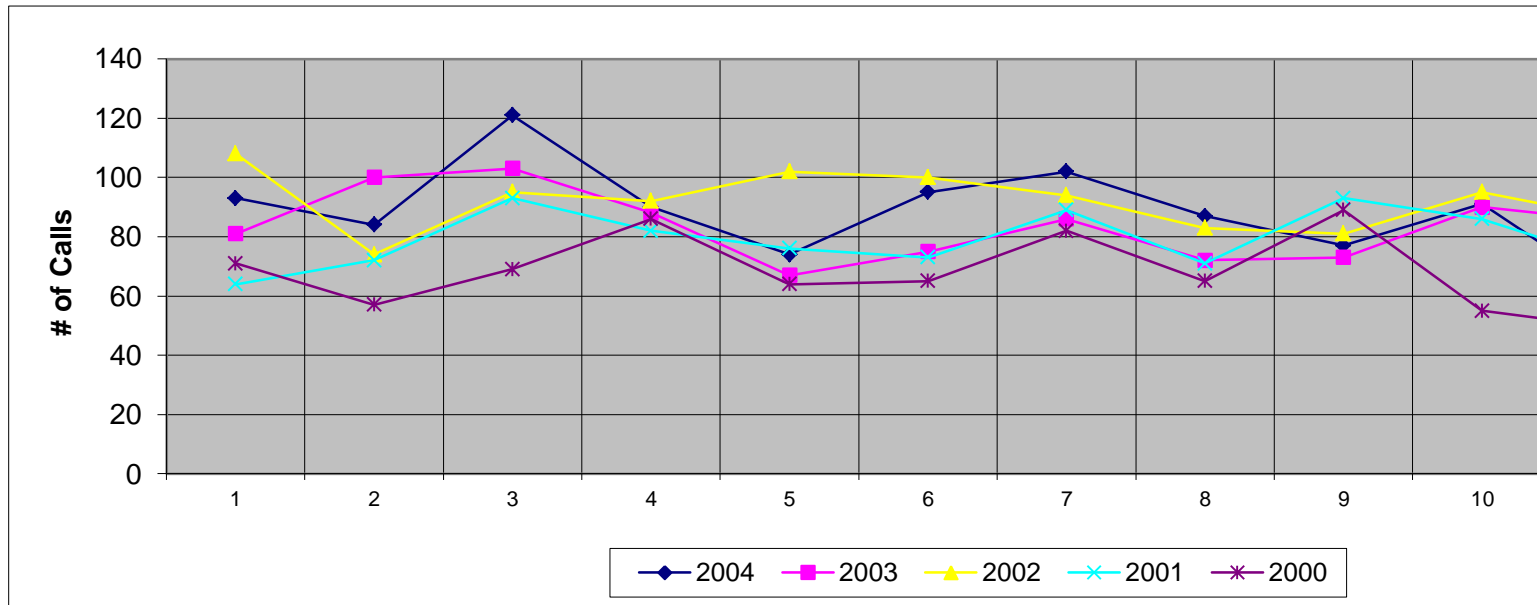
Type	2000	2001	2002	2003	2004
EMS / Medical	253	394	412	429	459
10-50 / Rescue	142	163	203	191	176
10-70 / Structure	18	22	46	37	52
10-70 / Natural Cover	77	30	64	42	78
10-70 / Vehicle	17	21	26	23	13
10-70 / Trash	8	18	27	17	26
10-70 / Electrical	7	4	9	2	7
Smoke Scare	9	7	0	19	26
System Malfunction	75	85	102	73	65
Bomb Scare	3	0	0	1	1
Haz-Mat	11	27	32	25	27



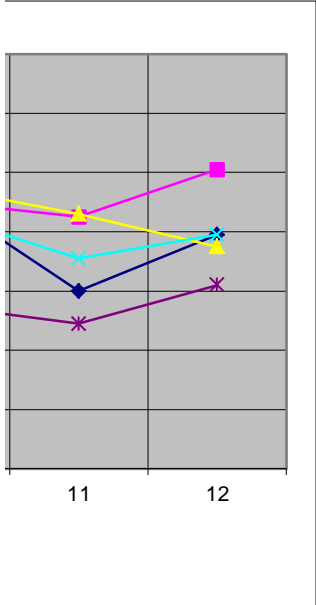
LOGAN-ROGERSVILLE FIRE PROTECTION DISTRICT

3427 South State Hwy 125
Rogersville, MO 65742
(417) 753-4265

NUMBER OF EMERGENCY CALLS PER MONTH > 2000 THROUGH 2004 <



Month	2004	2003	2002	2001	2000
January	93	81	108	64	71
February	84	100	74	72	57
March	121	103	95	93	69
April	90	88	92	82	86
May	74	67	102	76	64
June	95	75	100	73	65
July	102	86	94	89	82
August	87	72	83	71	65
September	77	73	81	93	89
October	91	90	95	86	55
November	60	85	86	71	49
December	79	101	75	79	62

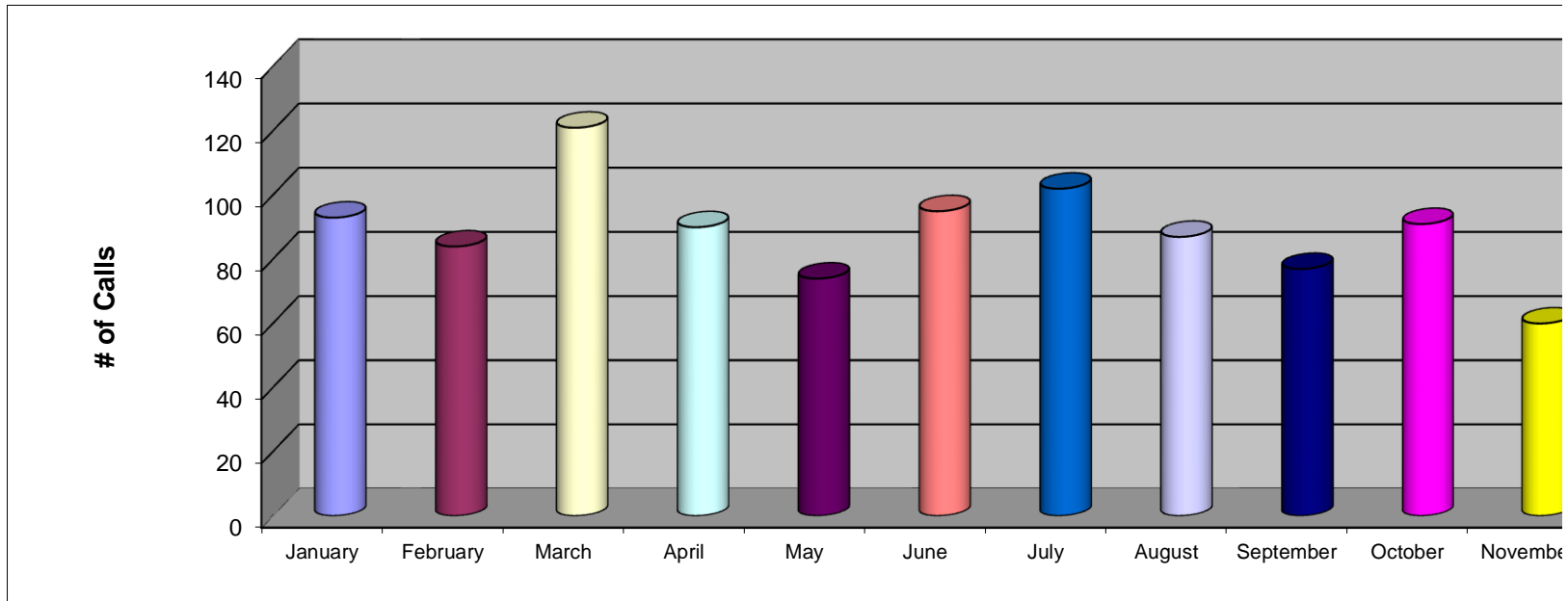




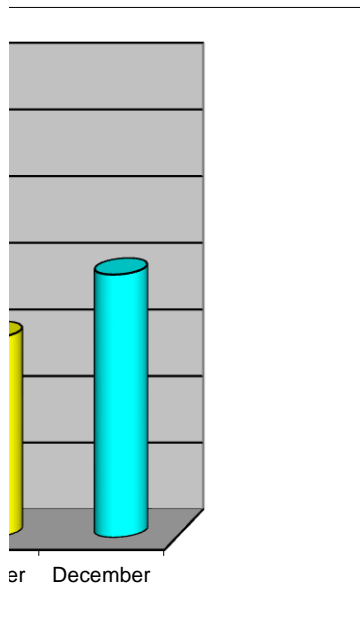
LOGAN-ROGERSVILLE FIRE PROTECTION DISTRICT

3427 South State Hwy 125
Rogersville, MO 65742
(417) 753-4265

NUMBER OF EMERGENCY CALLS PER MONTH DURING THE YEAR OF 2004



Month	2004
January	93
February	84
March	121
April	90
May	74
June	95
July	102
August	87
September	77
October	91
November	60

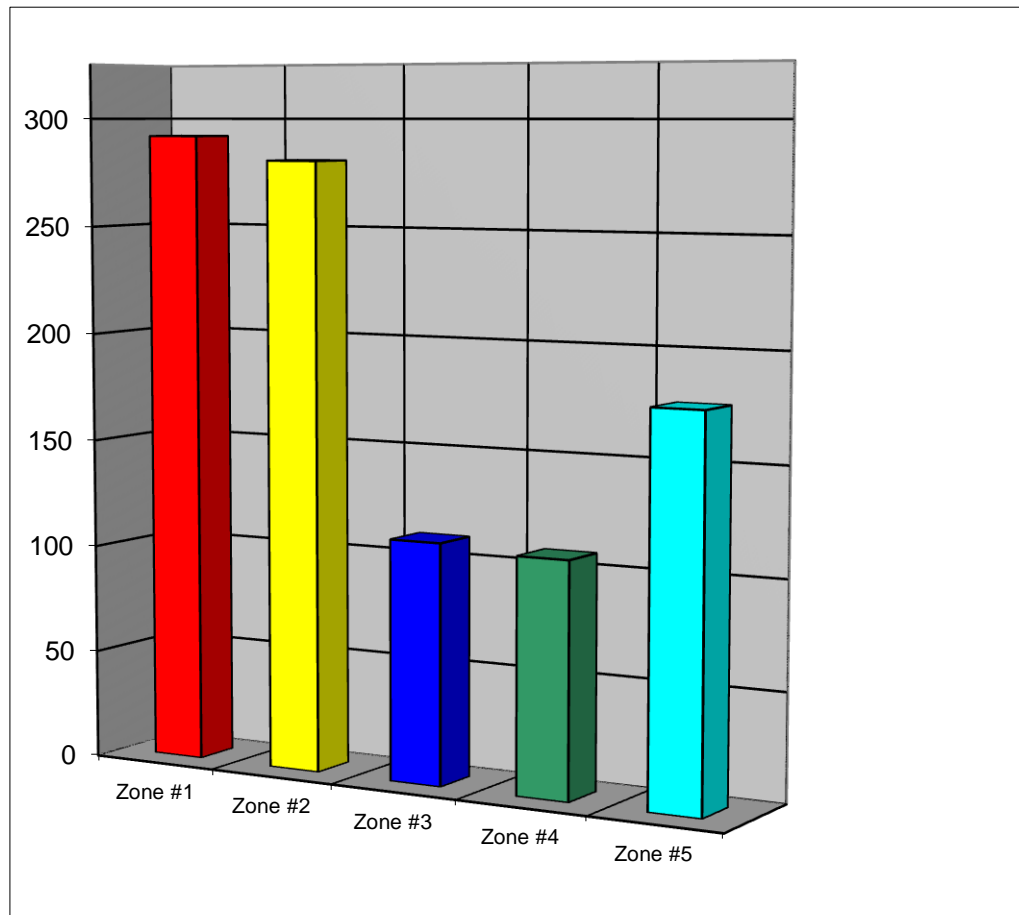




LOGAN-ROGERSVILLE FIRE PROTECTION DISTRICT

3427 South State Hwy 125
Rogersville, MO 65742
(417) 753-4265

EMERGENCY CALLS RUN PER STATION ZONE DURING THE YEAR OF 2004



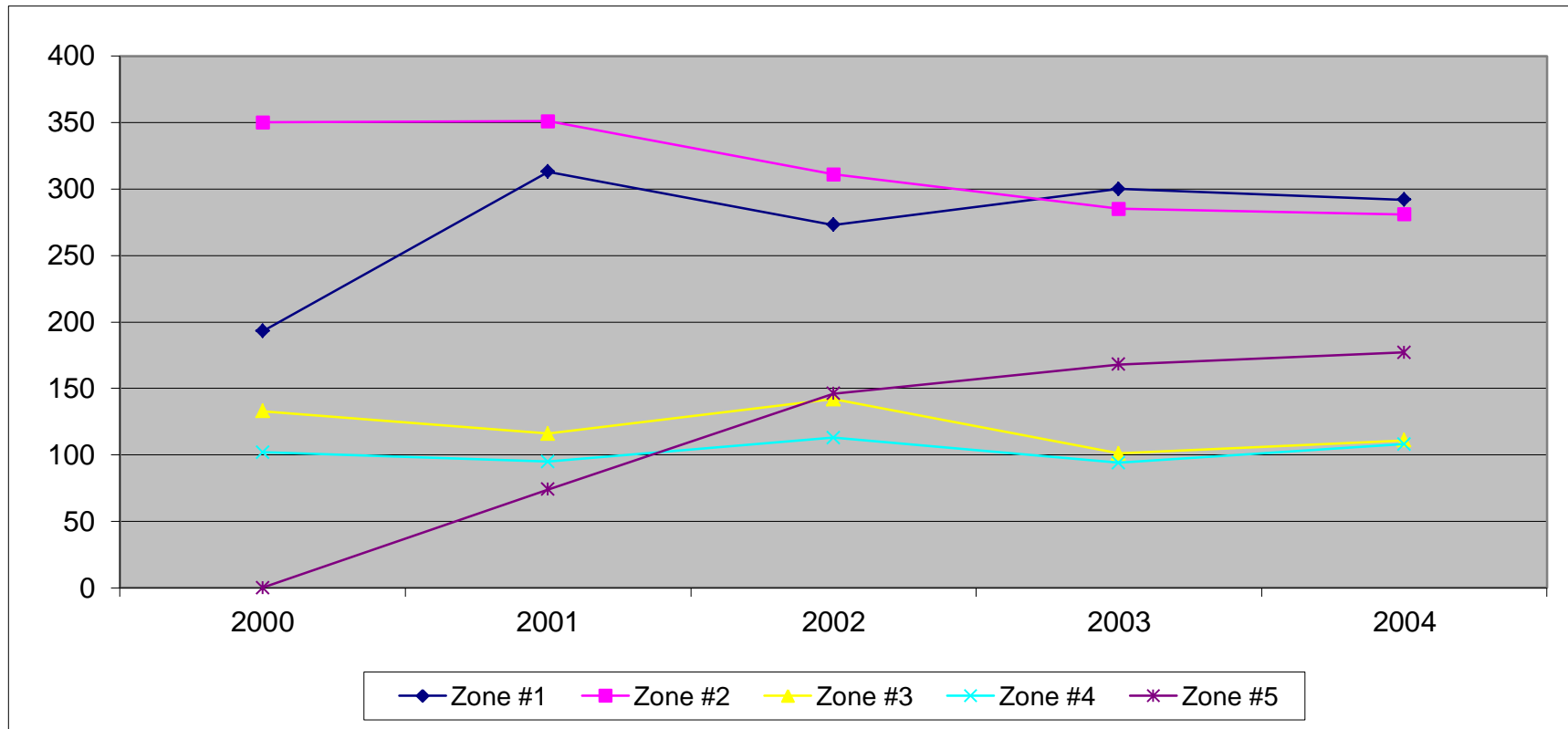
	Zone #1	Zone #2	Zone #3	Zone #4	Zone #5
Total:	292	281	111	108	177



LOGAN-ROGERSVILLE FIRE PROTECTION DISTRICT

3427 South State Hwy 125
Rogersville, MO 65742
(417) 753-4265

EMERGENCY CALLS RUN PER STATION ZONE > 1999 THROUGH 2004 <



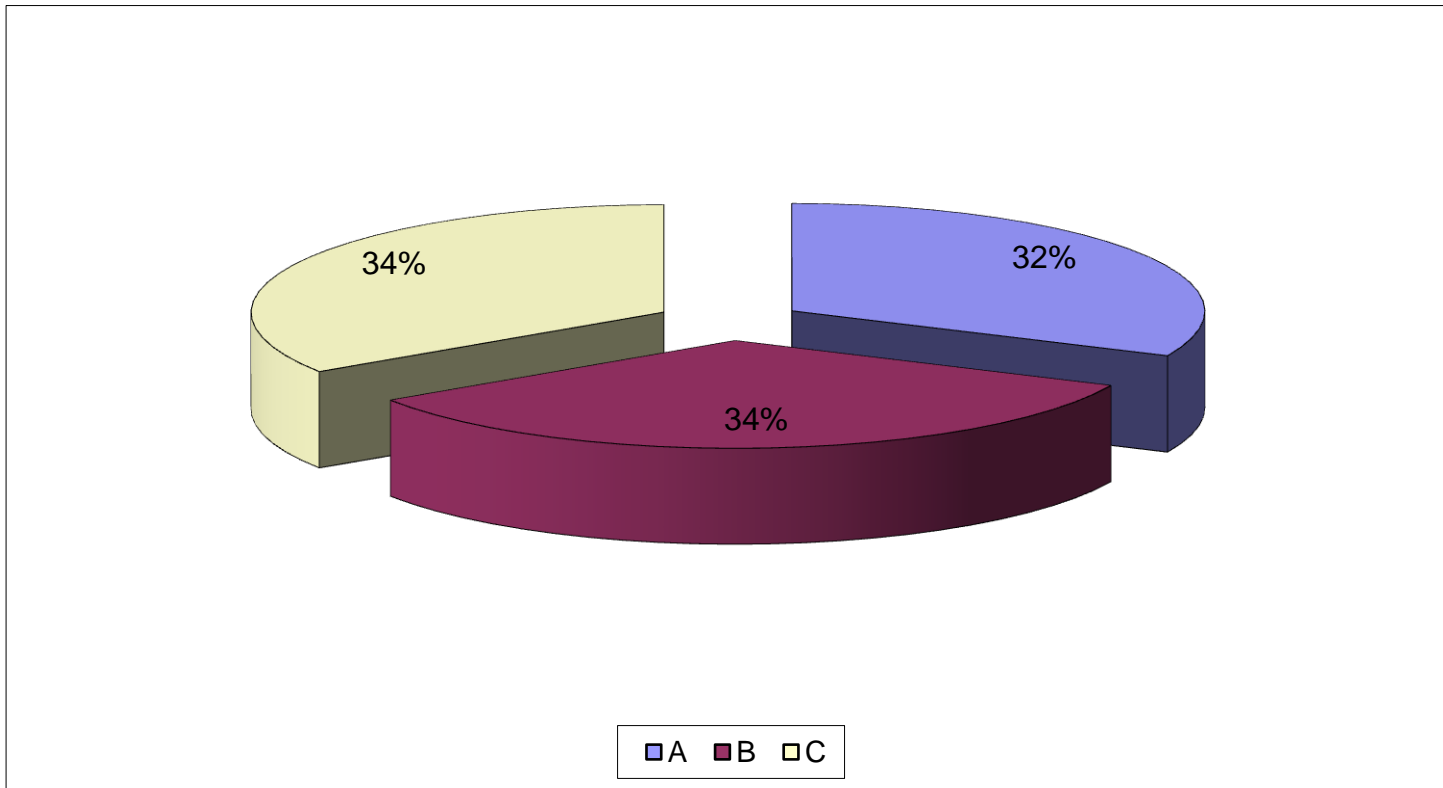
STATION ZONE	2000	2001	2002	2003	2004
Zone #1	193	313	273	300	292
Zone #2	350	351	311	285	281
Zone #3	133	116	142	101	111
Zone #4	102	95	113	94	108
Zone #5	0	74	146	168	177



LOGAN-ROGERSVILLE FIRE PROTECTION DISTRICT

3427 South State Hwy 125
Rogersville, MO 65742
(417) 753-4265

EMERGENCY CALLS RUN PER SHIFT DURING THE YEAR OF 2004



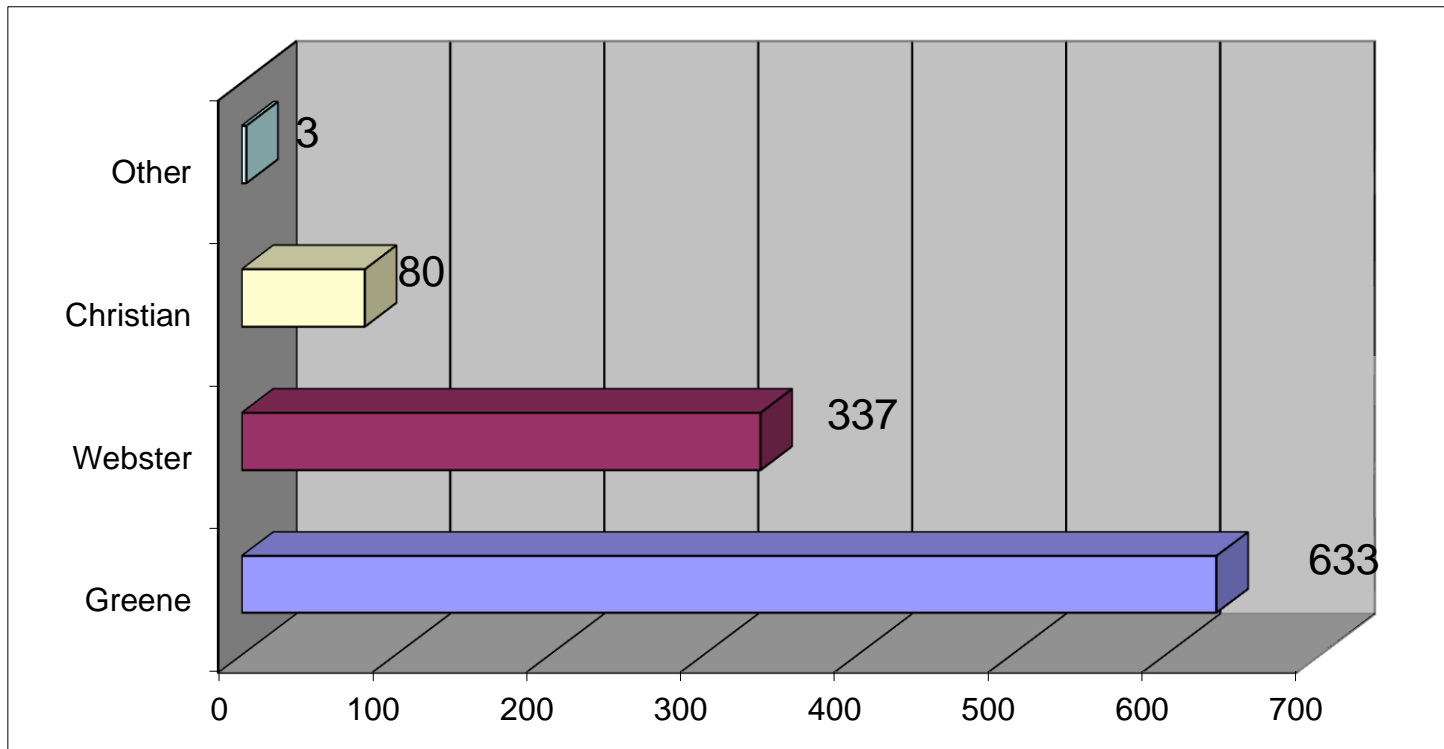
Shift	# of Calls	Percent
A	335	32.81%
B	356	34.87%
C	361	35.36%



LOGAN-ROGERSVILLE FIRE PROTECTION DISTRICT

3427 South State Hwy 125
Rogersville, MO 65742
(417) 753-4265

EMERGENCY CALLS RUN PER COUNTY DURING THE YEAR OF 2004



County	# of Calls	Percent
Greene	633	62.00%
Webster	337	33.01%
Christian	80	7.84%
Other	3	0.29%



LOGAN-ROGERSVILLE FIRE PROTECTION DISTRICT

3427 South State Hwy 125
Rogersville, MO 65742
(417) 753-4265

EMERGENCY CALLS RUN PER APPARATUS DURING THE YEAR OF 2004

Apparatus	2004	2003	2002	2001	2000	1999	1998	1997
Brush 123	8	11	9	11	0	0	0	0
Brush 124	36	50	84	51	0	0	0	0
Brush 125	7	23	0	0	0	0	0	0
Brush 321	87	91	84	101	135	90	53	76
Brush 422	120	86	98	41	63	82	34	58
Engine 434	59	34	64	78	212	100	211	365
Engine 135	424	387	500	316	0	0	0	0
Engine 233	239	275	271	288	375	461	79	0
Engine 331	10	22	17	31	41	50	0	0
Haz-Mat 302	41	2	5	14	4	10	8	0
Rescue 111	625	618	566	520	265	97	141	120
Service 403	31	-	-	-	-	-	-	-
Service Van 201	38	32	3	0	0	0	0	0
Tanker 143	17	14	32	27	32	24	17	21
Tanker 242	34	20	38	16	19	24	32	41
Tanker 341	32	29	33	34	52	45	34	35
Tanker 444	4	10	20	10	7	5	0	0
Truck 252	13	17	43	54	57	118	130	158
Truck 651	76	86	155	0	0	0	0	0



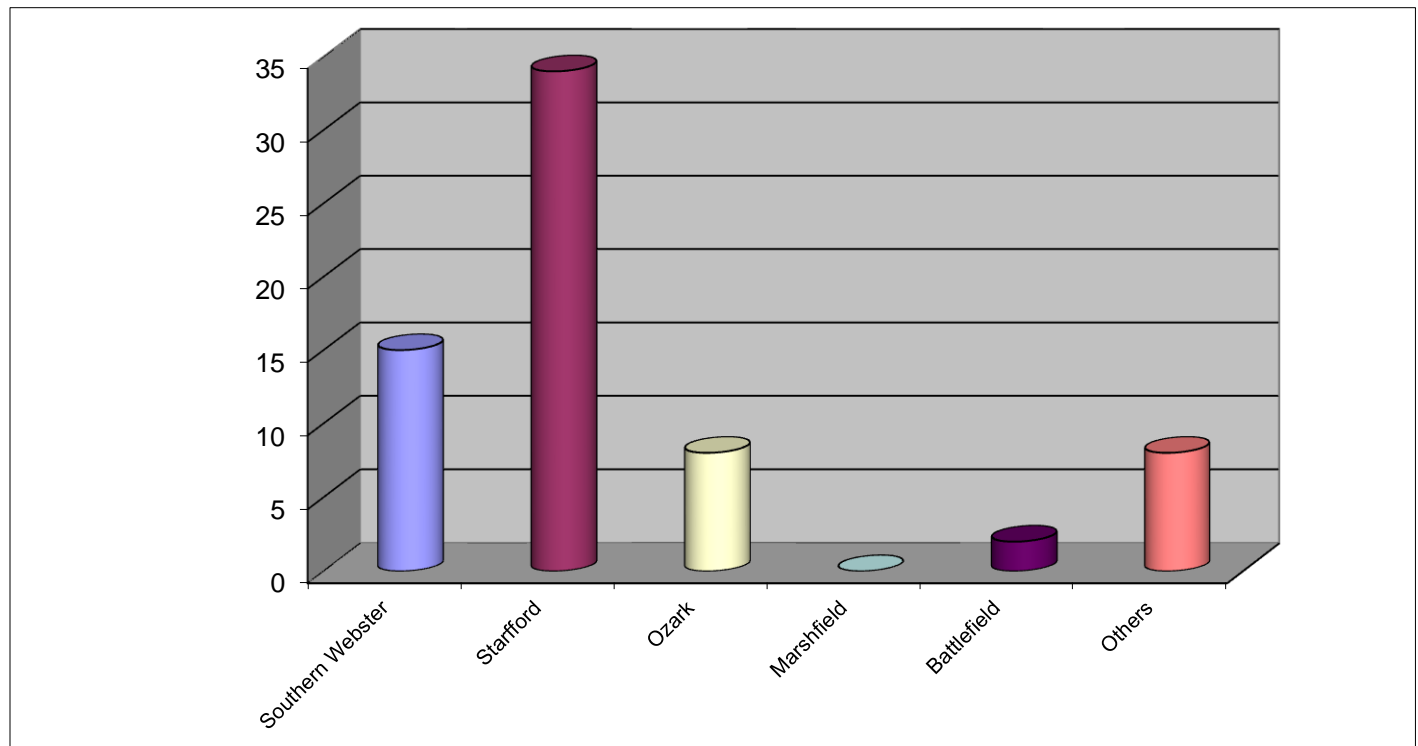
LOGAN-ROGERSVILLE FIRE PROTECTION DISTRICT

3427 South State Hwy 125
Rogersville, MO 65742
(417) 753-4265

NUMBER OF CALLS IN WHICH MUTUAL AID WAS PROVIDED DURING THE YEAR OF 2004

Departments That We Provided Aid To During Year 2004:

<u>Department</u>	<u># of Calls</u>
Southern Webster	15
Starford	34
Ozark	8
Marshfield	0
Battlefield	2
Others	8
Total:	67





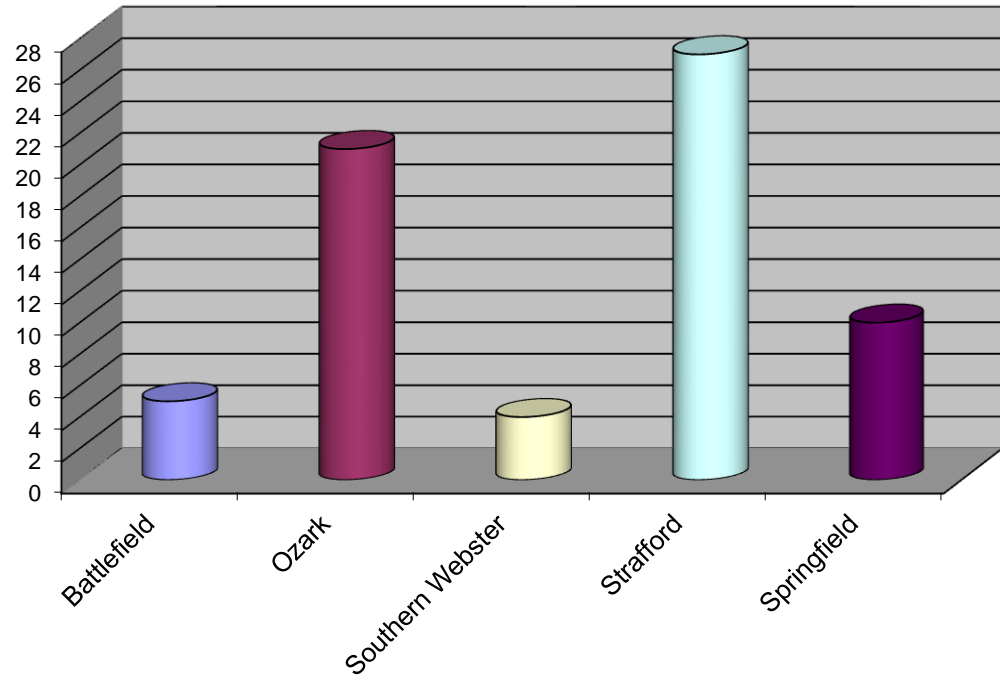
LOGAN-ROGERSVILLE FIRE PROTECTION DISTRICT

3427 South State Hwy 125
Rogersville, MO 65742
(417) 753-4265

NUMBER OF CALLS IN WHICH MUTUAL AID WAS RECEIVED DURING THE YEAR OF 2004

Departments That We Received Aid From During Year 2004:

<u>Department</u>	<u># of Calls</u>
Battlefield	5
Ozark	21
Southern Webster	4
Strafford	27
Springfield	10
Total:	67



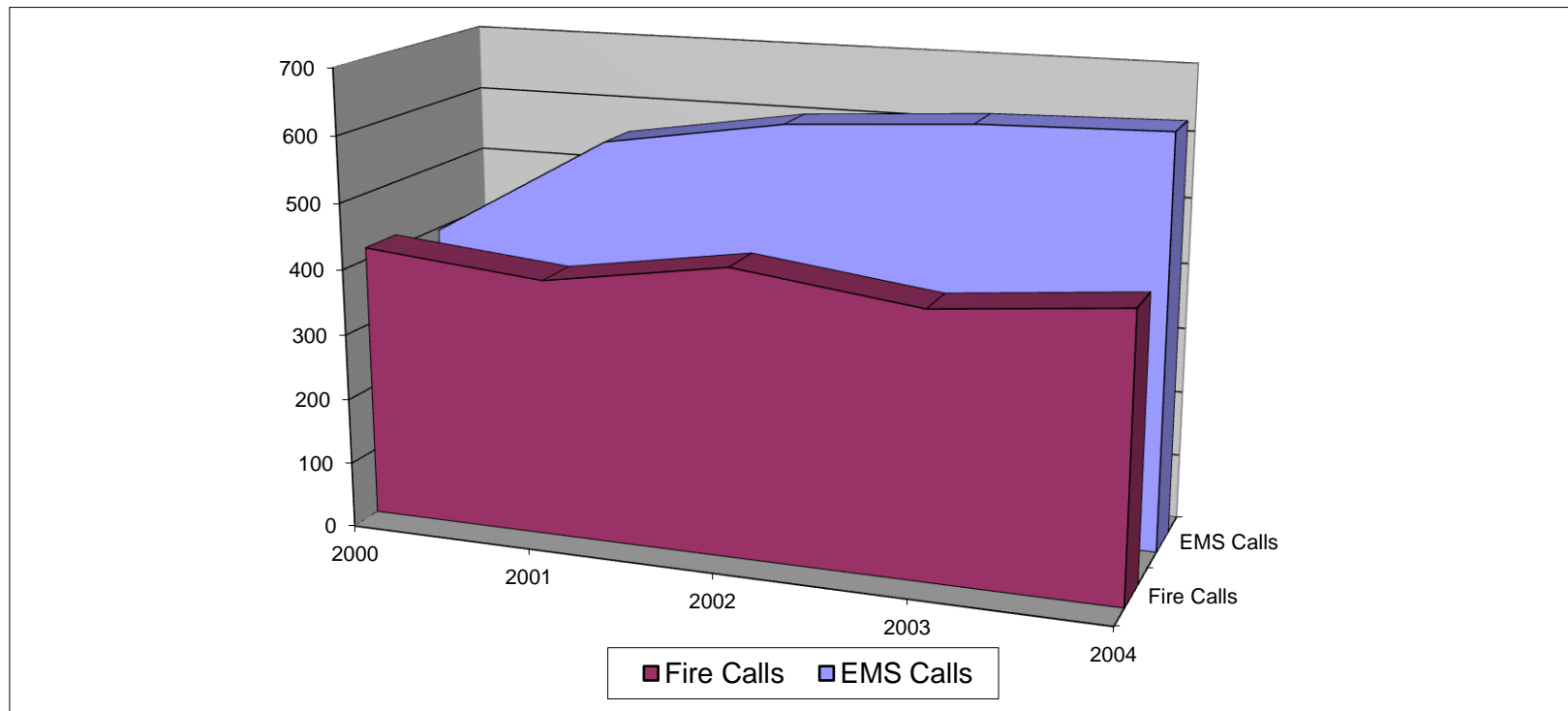




LOGAN-ROGERSVILLE FIRE PROTECTION DISTRICT

3427 South State Hwy 125
Rogersville, MO 65742
(417) 753-4265

TOTAL RESPONSE OF EMS VS. FIRE CALLS > 2000 THROUGH 2004 <



Year	No. of		No. of		Total Calls Per Year
	EMS Calls	Percentage	Fire Calls	Percentage	
2000	396	48.6%	418	51.4%	814
2001	557	58.7%	392	41.3%	949
2002	602	58.0%	436	42.0%	1038
2003	620	60.7%	401	39.3%	1021
2004	627	59.5%	428	40.6%	1053

]



LOGAN-ROGERSVILLE FIRE PROTECTION DISTRICT

3427 South State Hwy 125
Rogersville, MO 65742
(417) 753-4265

Truck Maintenance Report 2004

	MILEAGE	TOTAL FUEL (Gal.)	FUEL COST	REPAIR COST	TOTAL COST	NUMBER OF CALLS
B123	1,241	112.7	\$ 196.32	\$ 1,770.92	\$ 1,967.24	8
B124	3,537	545.3	\$ 908.27	\$ 133.90	\$ 1,042.17	36
B125	328	60.8	\$ 95.06	\$ 310.00	\$ 405.06	7
B321	2,143	331.4	\$ 554.73	\$ 2,663.28	\$ 3,218.01	87
B422	3,081	559.7	\$ 952.79	\$ 313.82	\$ 1,266.61	120
CAR1	30,210	1955.2	\$ 3,381.46	\$ 1,180.59	\$ 4,562.05	164
E135	9,050	1607.3	\$ 2,673.98	\$ 2,772.91	\$ 5,446.89	424
E233	3,190	713.3	\$ 1,127.52	\$ 481.43	\$ 1,608.95	239
E331	502	181.8	\$ 288.32	\$ 370.90	\$ 659.22	10
E434	1,625	347.8	\$ 574.92	\$ 416.33	\$ 991.25	59
R111	11,845	2085.1	\$ 3,662.03	\$ 3,248.57	\$ 6,910.60	625
MAINT. #1	4,316	346.7	\$ 567.46	\$ 576.36	\$ 1,143.82	-
S403	3,635	416.5	\$ 794.60	\$ 3,773.19	\$ 4,567.79	31
S201	10,116	1065.4	\$ 1,809.37	\$ 421.68	\$ 2,231.05	38
S302	614	49.7	\$ 83.62	\$ 100.00	\$ 183.62	4
T143	602	79.1	\$ 121.70	\$ 584.23	\$ 705.93	17
T242	1,041	291.6	\$ 494.19	\$ 3,225.26	\$ 3,719.45	34
T341	968	192.7	\$ 326.26	\$ 819.09	\$ 1,145.35	32
T444	155	70.3	\$ 123.01	\$ 385.20	\$ 508.21	4
TK252	281	75	\$ 118.97	\$ 339.72	\$ 458.69	13
TK651	1,939	444.9	\$ 713.71	\$ 11,928.36	\$ 12,642.07	76
TOTAL	90,419	11532.3	\$ 19,568.29	\$ 35,815.74	\$ 55,384.03	2028



LOGAN-ROGERSVILLE FIRE PROTECTION DISTRICT

3427 South State Hwy 125
Rogersville, MO 65742
(417) 753-4265

Apparatus Summary For The Year 2004 APPARATUS SUMMARY

ENGINES	YEAR	MAKE
434	1992	FREIGHTLINER
135	2000	INTERNATIONAL
233	1997	INTERNATIONAL
331	1973	FORD
RESCUES	YEAR	MAKE
111	1995	INTERNATIONAL
BRUSH	YEAR	MAKE
422	1995	FORD
321	1993	FORD
123	1986	CHEVROLET
125	1983	DODGE
124	1985	DODGE
TRUCK	YEAR	MAKE
252	1987	GMC
651	1985	HAHN
TANKER	YEAR	MAKE
143	1987	GMC
242	1992	INTERNATIONAL
341	1996	INTERNATIONAL
444	1971	GMC
SERVICE	YEAR	MAKE
CAR 1	2001	CHEVROLET
201	1985	DODGE
302	1974	CHEVROLET
403	2004	FORD
HAZMAT TRAILER	2002	HAULMARK