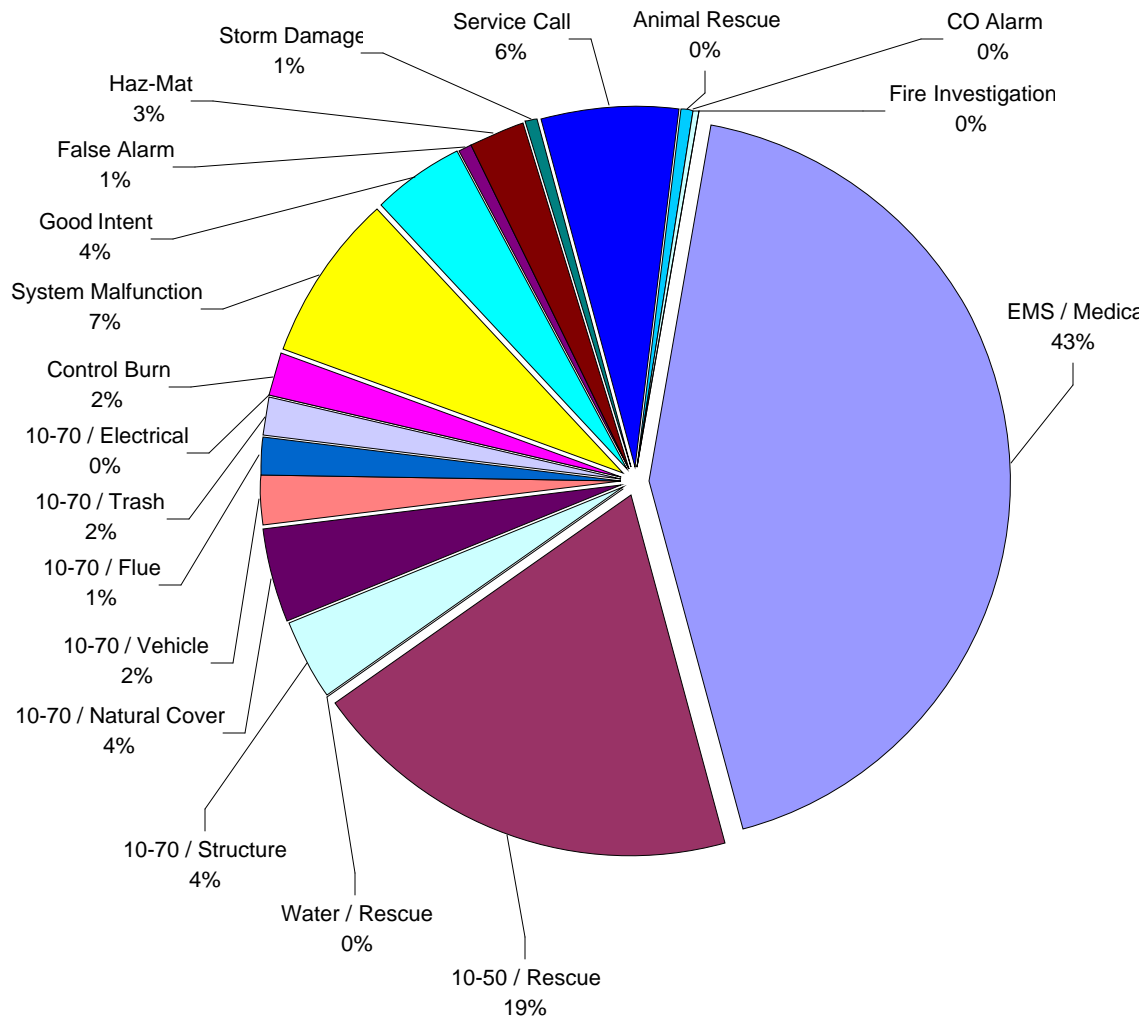




LOGAN-ROGERSVILLE FIRE PROTECTION DISTRICT

3427 South State Hwy 125
Rogersville, MO 65742
(417) 753-4265

TYPE AND NUMBER OF EMERGENCY CALLS RUN DURING THE YEAR OF 2003



Type	# of Calls	Percentage
EMS / Medical	429	42.0%
10-50 / Rescue	191	18.7%
Water / Rescue	0	0.0%
10-70 / Structure	37	3.6%
10-70 / Natural Cover	42	4.1%
10-70 / Vehicle	23	2.3%
10-70 / Flue	14	1.4%
10-70 / Trash	17	1.7%
10-70 / Electrical	2	0.2%
Control Burn	19	1.9%
System Malfunction	73	7.1%
Good Intent	42	4.1%
False Alarm	6	0.6%
Haz-Mat	25	2.4%
Storm Damage	6	0.6%
Service Call	60	5.9%
Animal Rescue	4	0.4%
CO Alarm	3	0.3%
Fire Investigation	1	0.1%
Assist Police Dept.	13	1.3%
Weather Watch	6	0.6%
Bomb Scare	1	0.1%
Wrong District	7	0.7%

Total Number: 1021

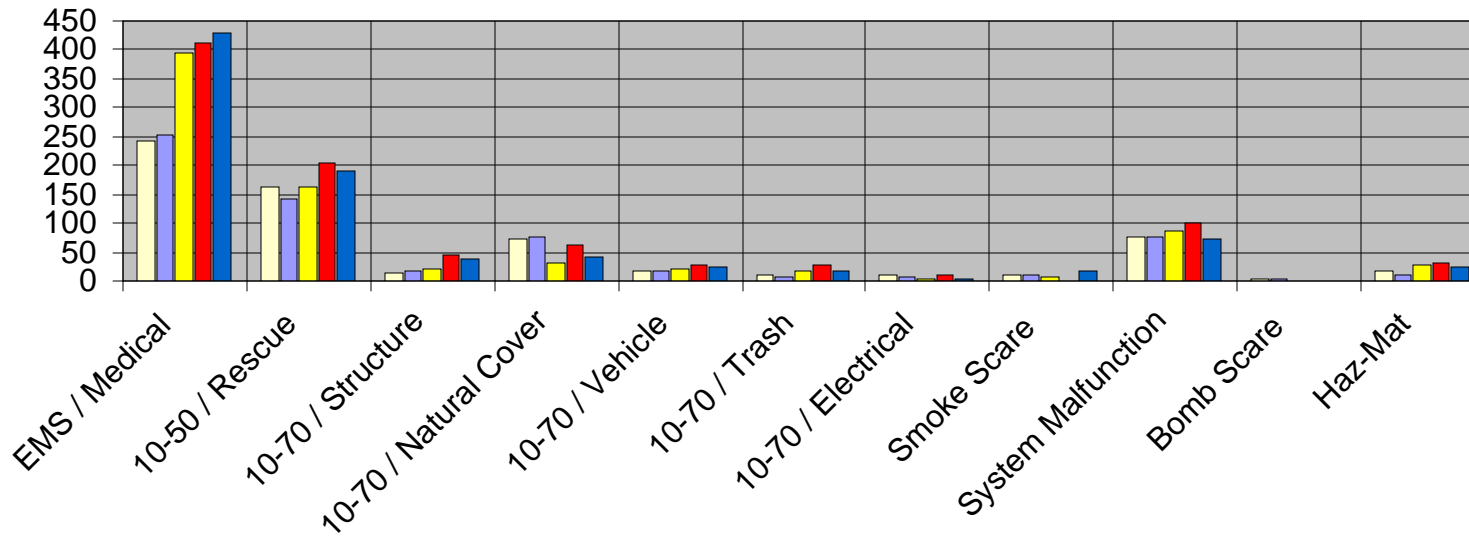
19%



LOGAN-ROGERSVILLE FIRE PROTECTION DISTRICT

3427 South State Hwy 125
Rogersville, MO 65742
(417) 753-4265

TYPE OF EMERGENCY CALLS PER YEAR > 1999 THROUGH 2003 <



1999
 2000
 2001
 2002
 2003

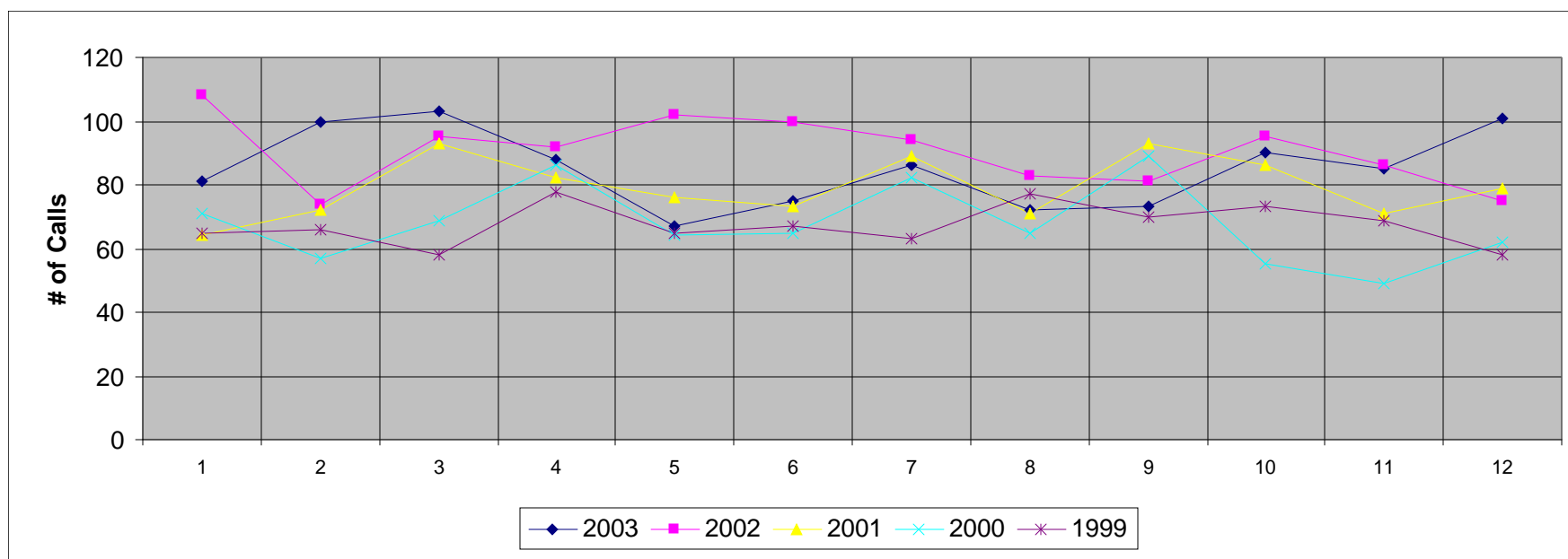
Type	1999	2000	2001	2002	2003
EMS / Medical	241	253	394	412	429
10-50 / Rescue	163	142	163	203	191
10-70 / Structure	14	18	22	46	37
10-70 / Natural Cover	71	77	30	64	42
10-70 / Vehicle	17	17	21	26	23
10-70 / Trash	11	8	18	27	17
10-70 / Electrical	9	7	4	9	2
Smoke Scare	12	9	7	0	19
System Malfunction	77	75	85	102	73
Bomb Scare	2	3	0	0	1
Haz-Mat	16	11	27	32	25



LOGAN-ROGERSVILLE FIRE PROTECTION DISTRICT

3427 South State Hwy 125
Rogersville, MO 65742
(417) 753-4265

NUMBER OF EMERGENCY CALLS PER MONTH > 1999 THROUGH 2003 <



Month	2003	2002	2001	2000	1999
January	81	108	64	71	65
February	100	74	72	57	66
March	103	95	93	69	58
April	88	92	82	86	78
May	67	102	76	64	65
June	75	100	73	65	67
July	86	94	89	82	63
August	72	83	71	65	77
September	73	81	93	89	70
October	90	95	86	55	73
November	85	86	71	49	69

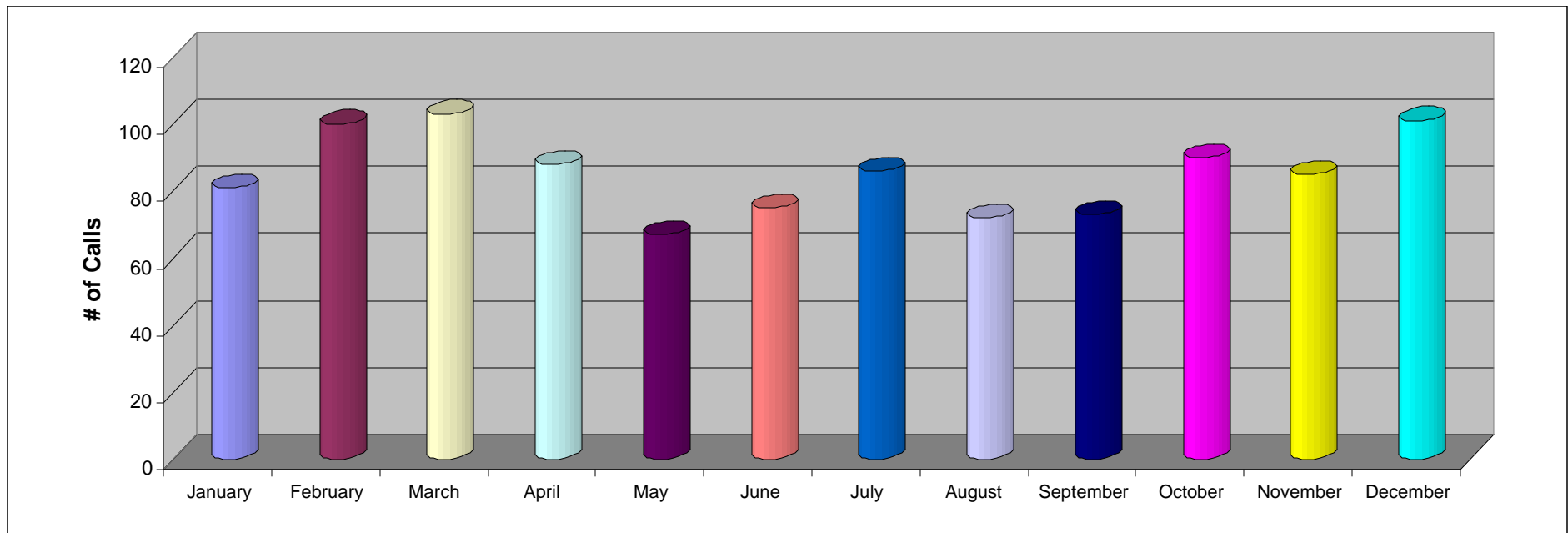
December	101	75	79	62	58
-----------------	-----	----	----	----	----



LOGAN-ROGERSVILLE FIRE PROTECTION DISTRICT

3427 South State Hwy 125
Rogersville, MO 65742
(417) 753-4265

NUMBER OF EMERGENCY CALLS PER MONTH DURING THE YEAR OF 2003



Month	2003
January	81
February	100
March	103
April	88
May	67
June	75
July	86
August	72
September	73
October	90
November	85

December	101
-----------------	-----



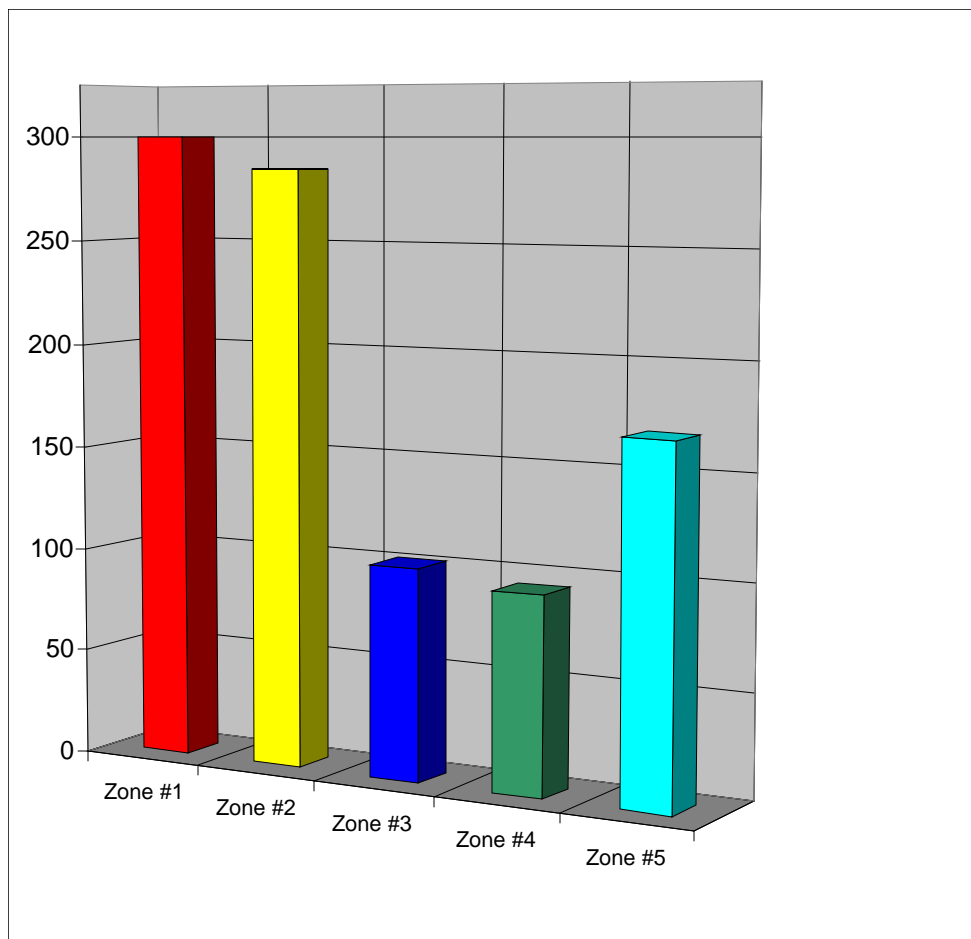
LOGAN-ROGERSVILLE FIRE PROTECTION DISTRICT

3427 South State Hwy 125

Rogersville, MO 65742

(417) 753-4265

EMERGENCY CALLS RUN PER STATION ZONE DURING THE YEAR OF 2003



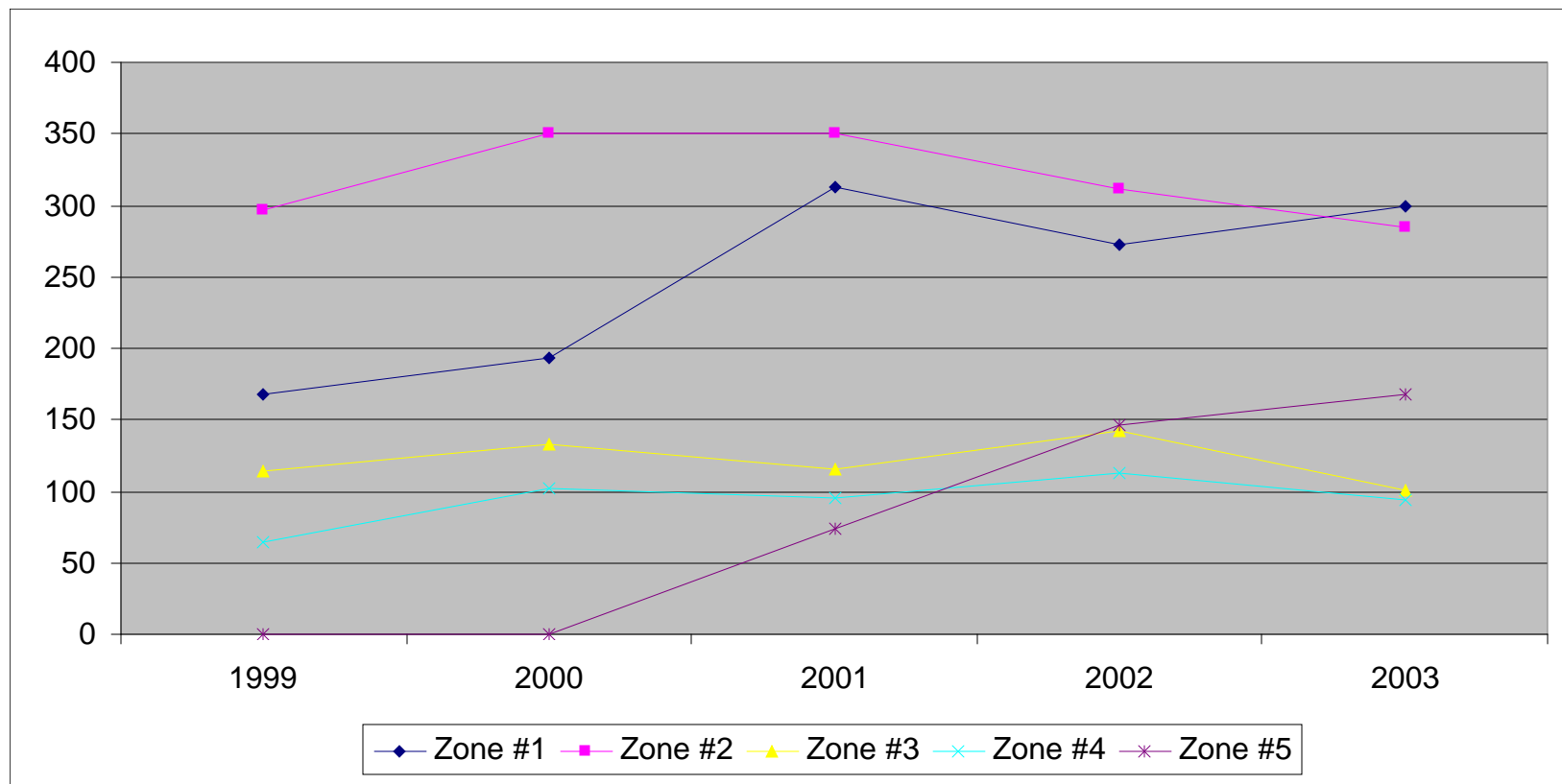
	Zone #1	Zone #2	Zone #3	Zone #4	Zone #5
Total:	300	285	101	94	168



LOGAN-ROGERSVILLE FIRE PROTECTION DISTRICT

3427 South State Hwy 125
Rogersville, MO 65742
(417) 753-4265

EMERGENCY CALLS RUN PER STATION ZONE > 1999 THROUGH 2003 <



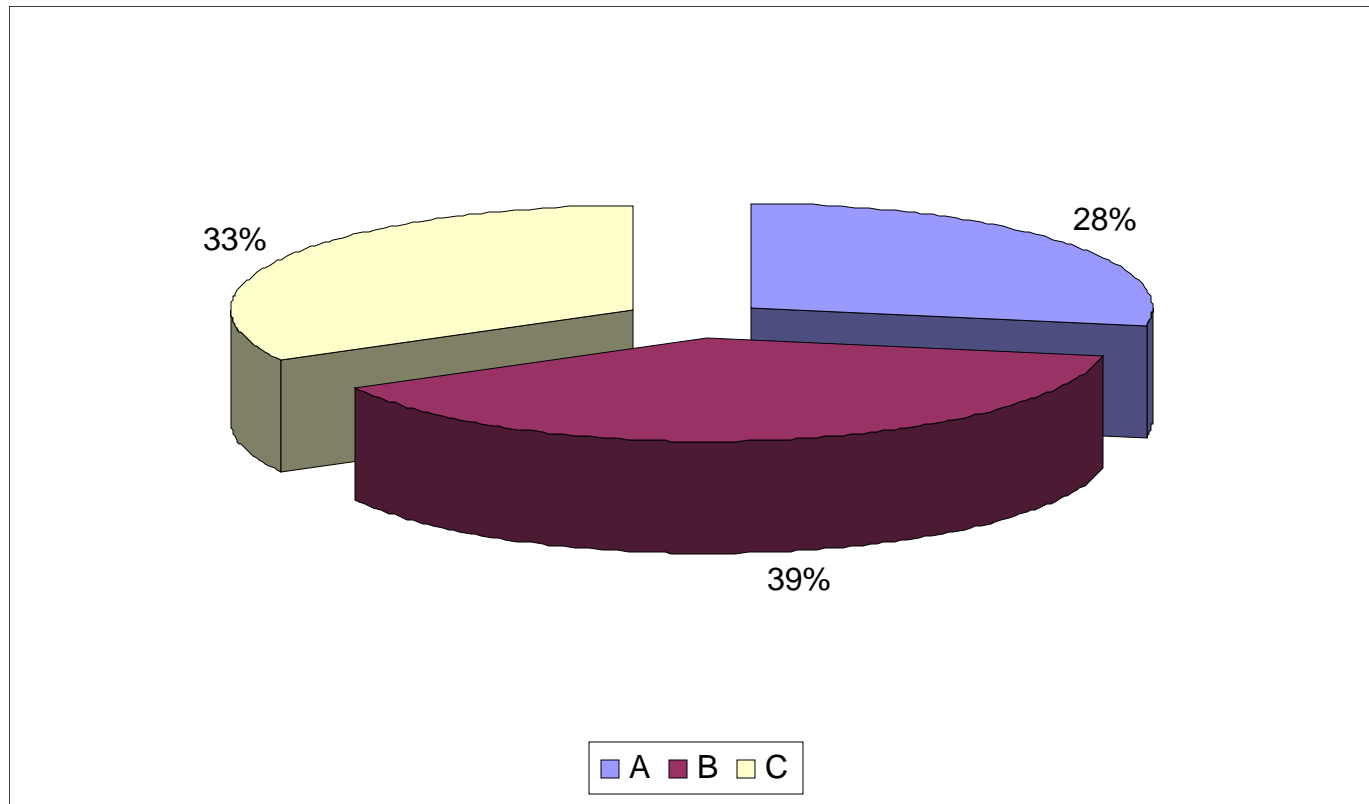
STATION ZONE	1999	2000	2001	2002	2003
Zone #1	168	193	313	273	300
Zone #2	296	350	351	311	285
Zone #3	114	133	116	142	101
Zone #4	64	102	95	113	94
Zone #5	0	0	74	146	168



LOGAN-ROGERSVILLE FIRE PROTECTION DISTRICT

3427 South State Hwy 125
Rogersville, MO 65742
(417) 753-4265

EMERGENCY CALLS RUN PER SHIFT DURING THE YEAR OF 2003



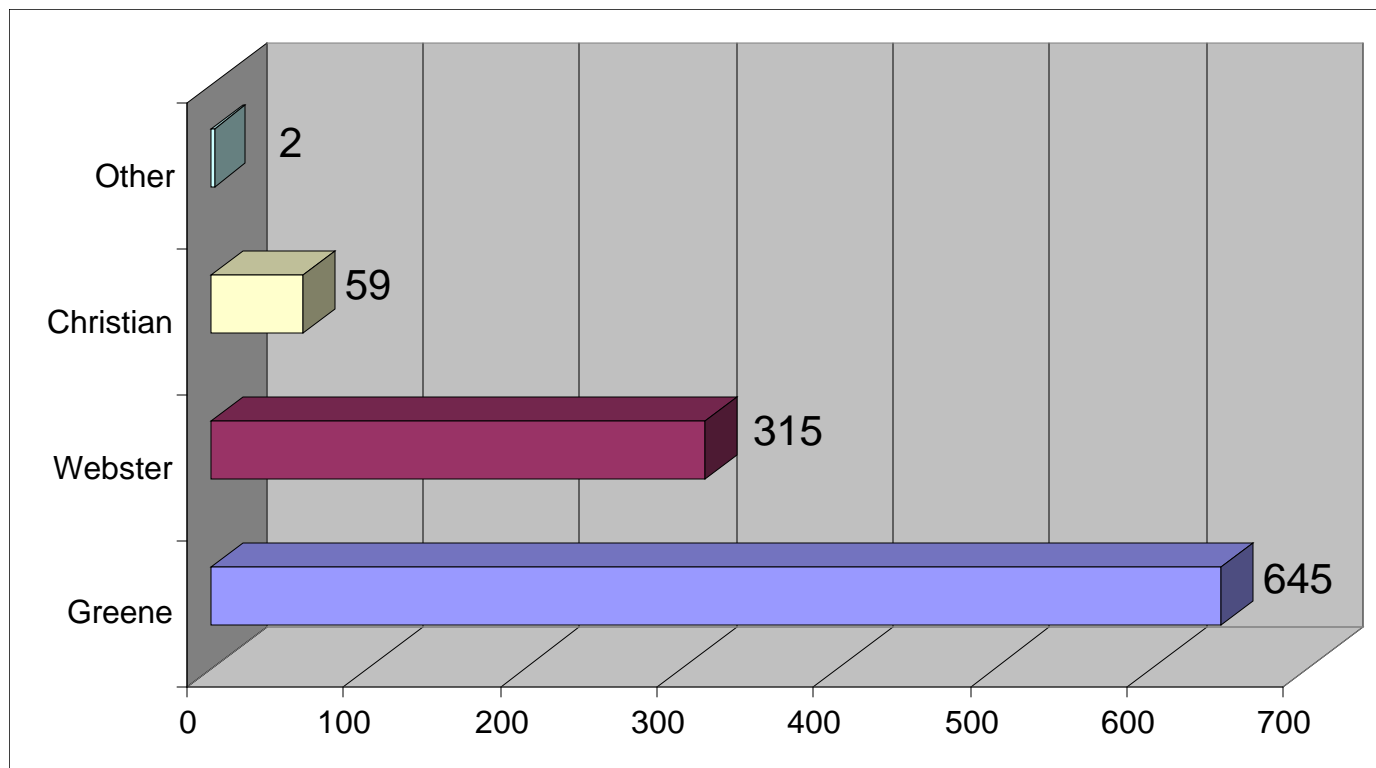
Shift	# of Calls	Percent
A	284	27.82%
B	400	39.18%
C	337	33.01%



LOGAN-ROGERSVILLE FIRE PROTECTION DISTRICT

3427 South State Hwy 125
Rogersville, MO 65742
(417) 753-4265

EMERGENCY CALLS RUN PER COUNTY DURING THE YEAR OF 2003



County	# of Calls	Percent
Greene	645	63.17%
Webster	315	30.85%
Christian	59	5.78%
Other	2	0.20%



LOGAN-ROGERSVILLE FIRE PROTECTION DISTRICT

3427 South State Hwy 125
Rogersville, MO 65742
(417) 753-4265

EMERGENCY CALLS RUN PER APPARATUS DURING THE YEAR OF 2003

Apparatus	2003	2002	2001	2000	1999	1998	1997	1996
Brush 123	11	9	11	0	0	0	0	0
Brush 124	50	84	51	0	0	0	0	0
Brush 125	23	0	0	0	0	0	0	0
Brush 321	91	84	101	135	90	53	76	156
Brush 422	86	98	41	63	82	34	58	43
Engine 434	34	64	78	212	100	211	365	432
Engine 135	387	500	316	0	0	0	0	0
Engine 233	275	271	288	375	461	79	0	0
Engine 332	0	0	9	38	75	59	40	80
Engine 331	22	17	31	41	50	0	0	0
Haz-Mat 302	2	5	14	4	10	8	0	0
Rescue 111	618	566	520	265	97	141	120	193
Rescue 212	0	0	43	111	172	204	202	224
Service Van 201	32	3	0	0	0	0	0	0
Tanker 143	14	32	27	32	24	17	21	31
Tanker 242	20	38	16	19	24	32	41	35
Tanker 341	29	33	34	52	45	34	35	29
Tanker 444	10	20	10	7	5	0	0	0
Truck 252	17	43	54	57	118	130	158	160
Truck 651	86	155	0	0	0	0	0	0



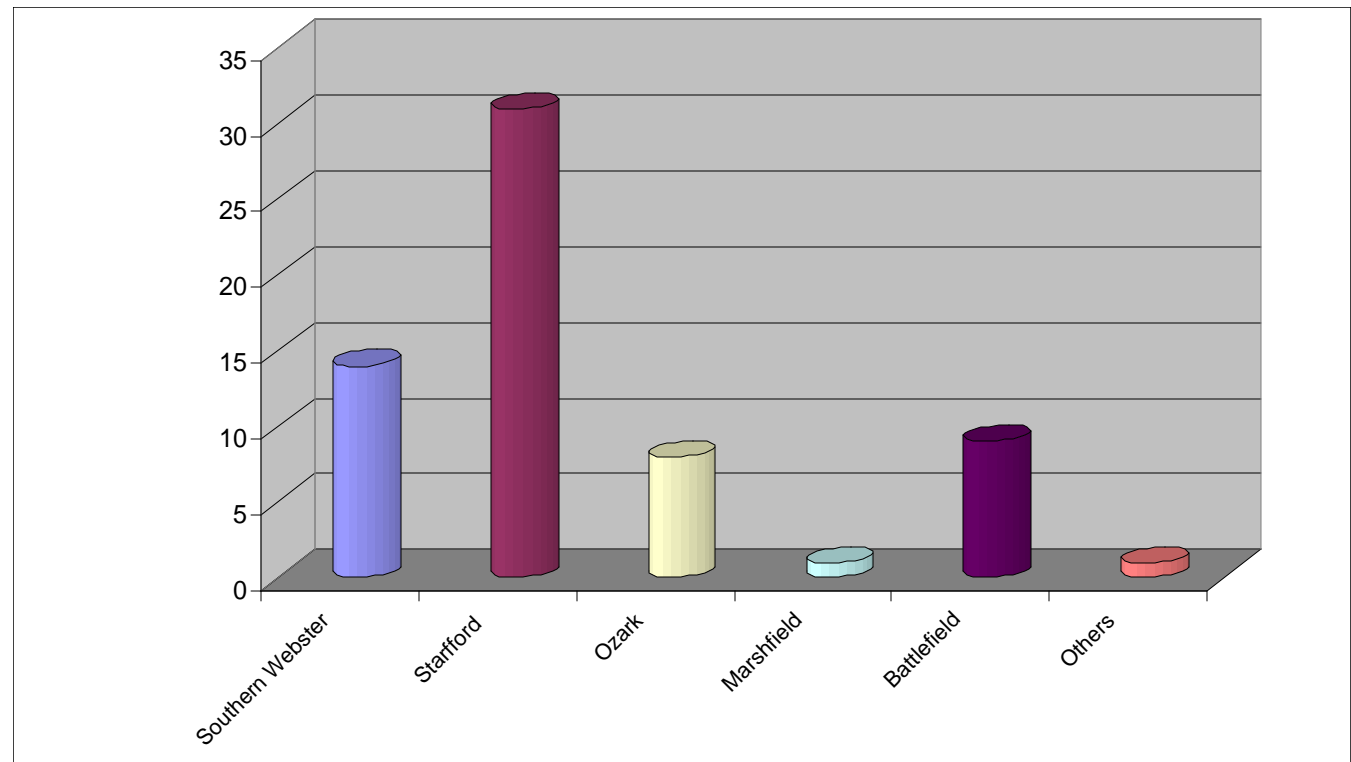
LOGAN-ROGERSVILLE FIRE PROTECTION DISTRICT

3427 South State Hwy 125
Rogersville, MO 65742
(417) 753-4265

NUMBER OF CALLS IN WHICH MUTUAL AID WAS PROVIDED DURING THE YEAR OF 2003

Departments That We Provided Aid To During Year 2003:

<u>Department</u>	<u># of Calls</u>
Southern Webster	14
Starfford	31
Ozark	8
Marshfield	1
Battlefield	9
Others	1
Total:	64





LOGAN-ROGERSVILLE FIRE PROTECTION DISTRICT

3427 South State Hwy 125

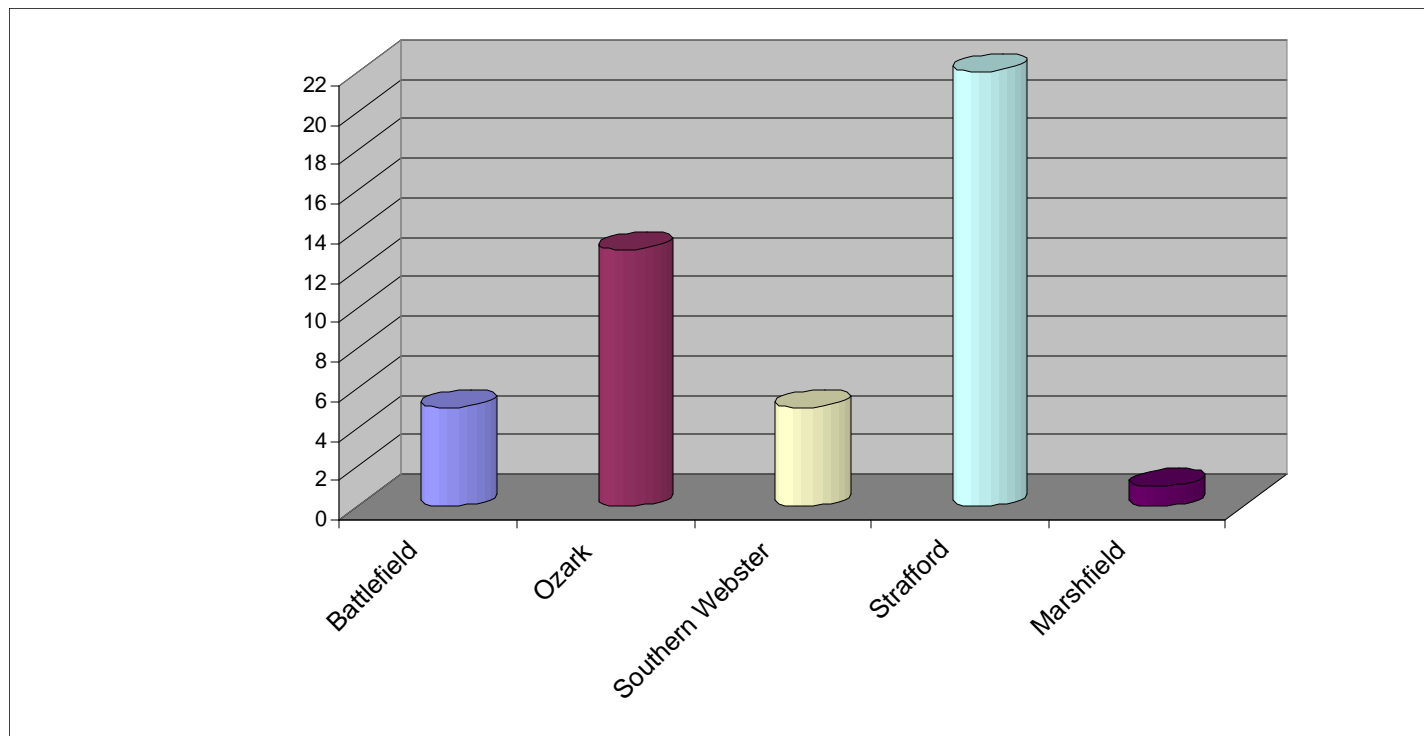
Rogersville, MO 65742

(417) 753-4265

NUMBER OF CALLS IN WHICH MUTUAL AID WAS RECEIVED DURING THE YEAR OF 2003

Departments That We Received Aid From During Year 2003:

Department	# of Calls
Battlefield	5
Ozark	13
Southern Webster	5
Strafford	22
Marshfield	1
Total:	46





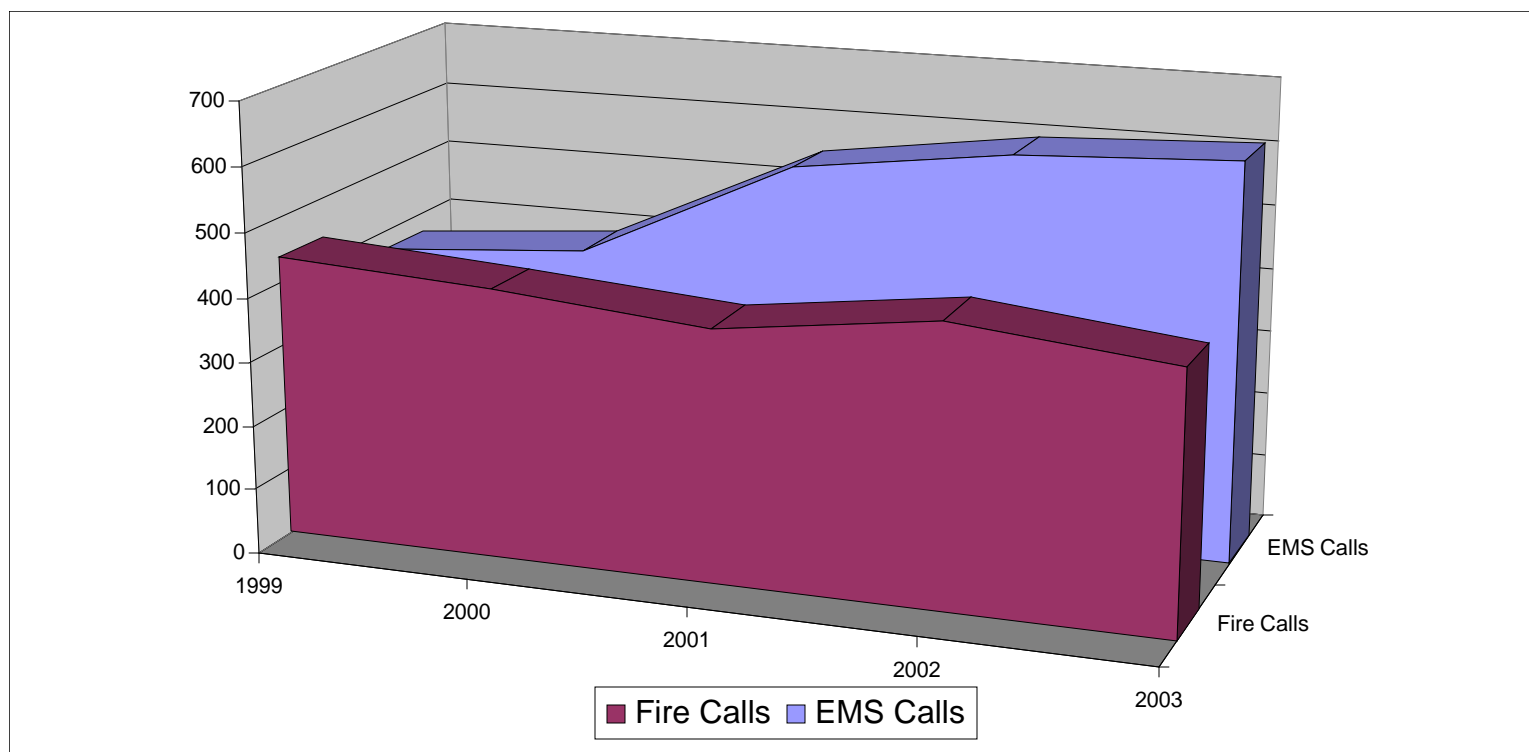
LOGAN-ROGERSVILLE FIRE PROTECTION DISTRICT

3427 South State Hwy 125

Rogersville, MO 65742

(417) 753-4265

TOTAL RESPONSE OF EMS VS. FIRE CALLS > 1999 THROUGH 2003 <



Year	No. of		No. of		Total Calls Per Year
	EMS Calls	Percentage	Fire Calls	Percentage	
1999	370	45.74%	439	54.26%	809
2000	396	48.65%	418	51.35%	814
2001	557	58.69%	392	41.31%	949
2002	602	58.00%	436	42.00%	1038
2003	620	60.72%	401	39.28%	1021



LOGAN-ROGERSVILLE FIRE PROTECTION DISTRICT

3427 South State Hwy 125
Rogersville, MO 65742
(417) 753-4265

Truck Maintenance Report 2003

	MILEAGE	TOTAL FUEL (Gal.)	FUEL COST	REPAIR COST	TOTAL COST	NUMBER OF CALLS
B123	-	30.3	\$ 58.64	\$ 136.32	\$ 194.96	11
B124	7426	997.1	\$ 1,456.11	\$ 391.39	\$ 1,847.50	50
B125	1882	308	\$ 536.34	\$ 2,455.79	\$ 2,992.13	23
B321	1991	321.1	\$ 504.41	\$ 1,363.81	\$ 1,868.22	91
B422	2395	457	\$ 615.80	\$ 1,515.84	\$ 2,131.64	86
CAR1	23494	1691	\$ 2,463.93	\$ 1,490.99	\$ 3,954.92	186
E135	6483	1240.4	\$ 2,004.06	\$ 4,408.53	\$ 6,412.59	387
E233	3753	712.7	\$ 1,050.38	\$ 6,381.00	\$ 7,431.38	275
E331	1089	379.6	\$ 205.90	\$ 969.17	\$ 1,175.07	22
E434	869	180.6	\$ 513.81	\$ 8,135.34	\$ 8,649.15	34
R111	8809	1716.4	\$ 2,567.41	\$ 2,051.36	\$ 4,618.77	618
MAINT. #1	-	-	\$ 145.30	\$ 658.87	\$ 804.17	0
S201	8051	858.1	\$ 1,224.31	\$ 1,499.45	\$ 2,723.76	32
S302	224	18.1	\$ 25.00	\$ 665.93	\$ 690.93	2
T143	425	114.1	\$ 160.34	\$ 636.80	\$ 797.14	14
T242	614	197.1	\$ 323.02	\$ 3,597.46	\$ 3,920.48	20
T341	908	153.2	\$ 231.83	\$ 1,080.00	\$ 1,311.83	29
T444	353	167.6	\$ 232.47	\$ 273.30	\$ 505.77	10
TK252	400	100.2	\$ 203.18	\$ 235.37	\$ 438.55	17
TK651	1170	310.1	\$ 508.67	\$ 2,917.36	\$ 3,426.03	86
TOTAL	70336	9952.7	\$ 15,030.91	\$ 40,864.08	\$55,894.99	1993



LOGAN-ROGERSVILLE FIRE PROTECTION DISTRICT

3427 South State Hwy 125

Rogersville, MO 65742

(417) 753-4265

Apparatus Summary For The Year 2003

APPARATUS SUMMARY

ENGINES	YEAR	MAKE
434	1992	FREIGHTLINER
135	2000	INTERNATIONAL
233	1997	INTERNATIONAL
331	1973	FORD
RESCUES	YEAR	MAKE
111	1995	INTERNATIONAL
BRUSH	YEAR	MAKE
422	1995	FORD
321	1993	FORD
123	1977	DODGE
125	1983	DODGE
124	1985	DODGE
TRUCK	YEAR	MAKE
252	1987	GMC
651	1985	HAHN
TANKER	YEAR	MAKE
143	1987	GMC
242	1992	INTERNATIONAL
341	1996	INTERNATIONAL
444	1971	GMC
SERVICE	YEAR	MAKE
CAR 1	2001	CHEVROLET
201	1985	DODGE
302	1974	CHEVROLET
HAZMAT TRAILER	2002	HAULMARK