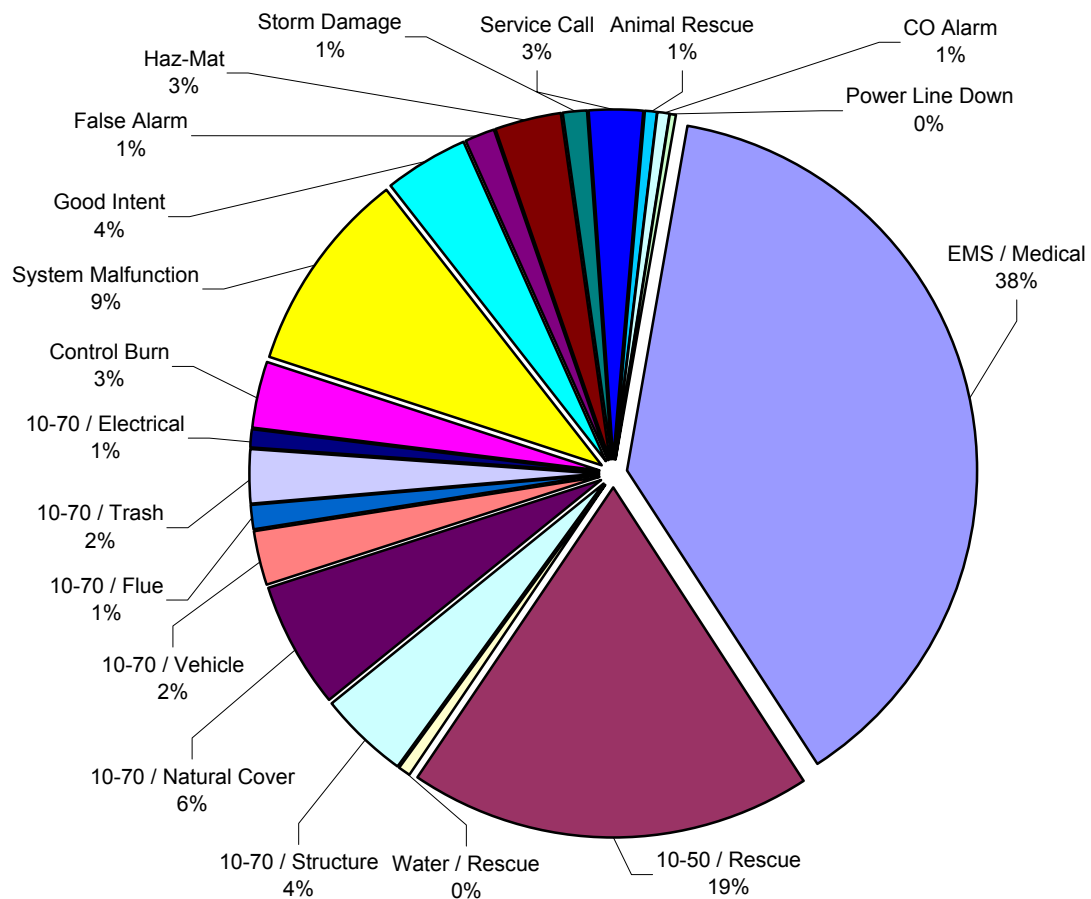




# LOGAN-ROGERSVILLE FIRE PROTECTION DISTRICT

3427 South State Hwy 125  
Rogersville, MO 65742  
(417) 753-4265

## TYPE AND NUMBER OF EMERGENCY CALLS RUN DURING THE YEAR OF 2002



Type	# of Calls	Percentage
EMS / Medical	412	38.0%
10-50 / Rescue	203	18.7%
Water / Rescue	5	0.5%
10-70 / Structure	46	4.2%
10-70 / Natural Cover	64	5.9%
10-70 / Vehicle	26	2.4%
10-70 / Flue	12	1.1%
10-70 / Trash	27	2.5%
10-70 / Electrical	9	0.8%
Control Burn	33	3.0%
System Malfunction	102	9.4%
Good Intent	45	4.1%
False Alarm	14	1.3%
Haz-Mat	32	2.9%
Storm Damage	13	1.2%
Service Call	28	2.6%
Animal Rescue	6	0.6%
CO Alarm	6	0.6%
Power Line Down	2	0.2%

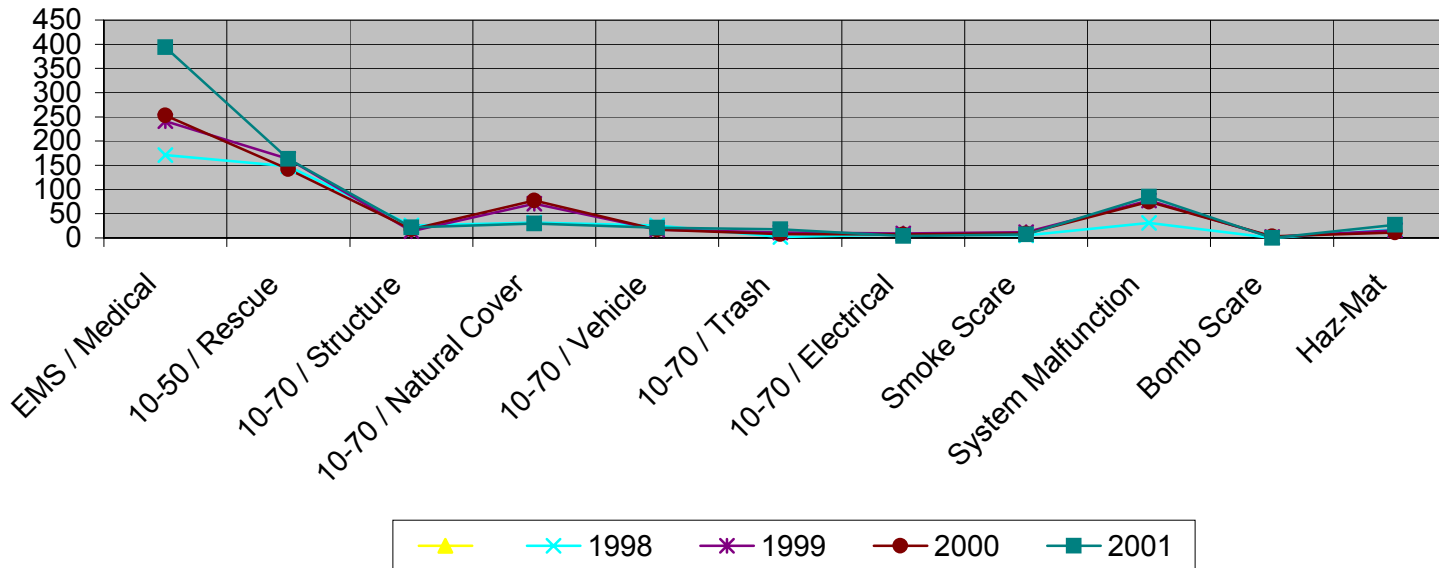
**Total Number: 1085**



# LOGAN-ROGERSVILLE FIRE PROTECTION DISTRICT

3427 South State Hwy 125  
Rogersville, MO 65742  
(417) 753-4265

## TYPE OF EMERGENCY CALLS PER YEAR > 1998 THROUGH 2002 <



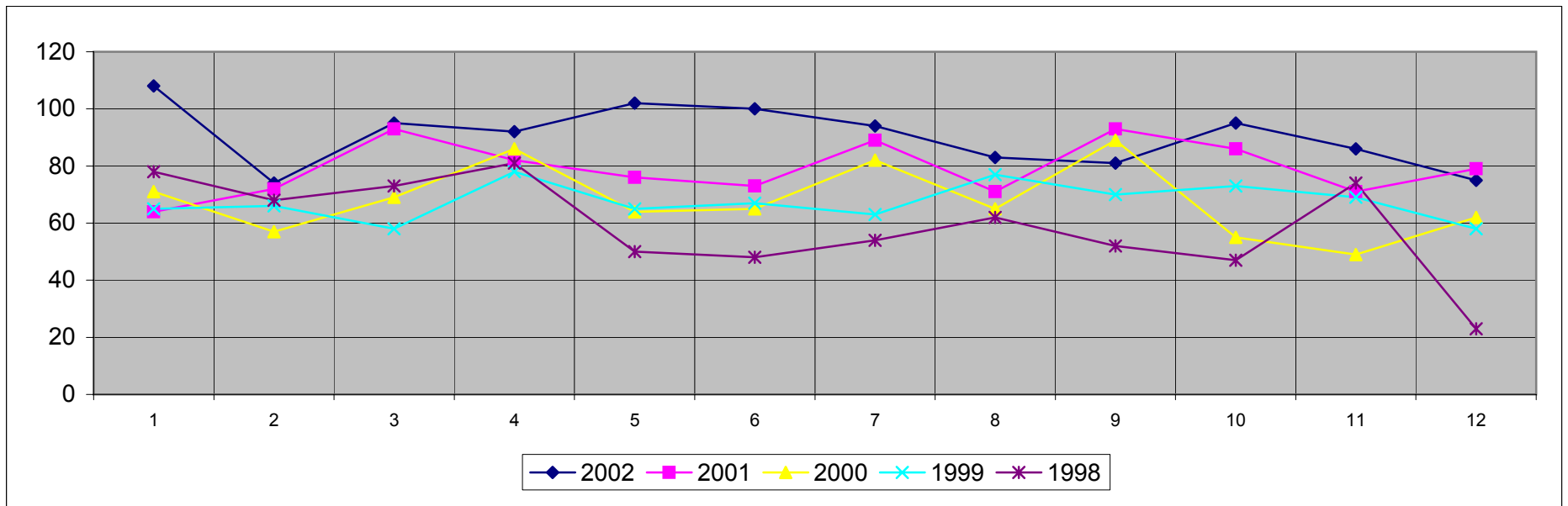
Type	1998	1999	2000	2001	2002
EMS / Medical	171	241	253	394	412
10-50 / Rescue	148	163	142	163	203
10-70 / Structure	26	14	18	22	46
10-70 / Natural Cover	32	71	77	30	64
10-70 / Vehicle	26	17	17	21	26
10-70 / Trash	2	11	8	18	27
10-70 / Electrical	7	9	7	4	9
Smoke Scare	5	12	9	7	0
System Malfunction	31	77	75	85	102
Bomb Scare	0	2	3	0	0
Haz-Mat	18	16	11	27	32



# LOGAN-ROGERSVILLE FIRE PROTECTION DISTRICT

3427 South State Hwy 125  
Rogersville, MO 65742  
(417) 753-4265

## NUMBER OF EMERGENCY CALLS PER MONTH > 1998 THROUGH 2002 <



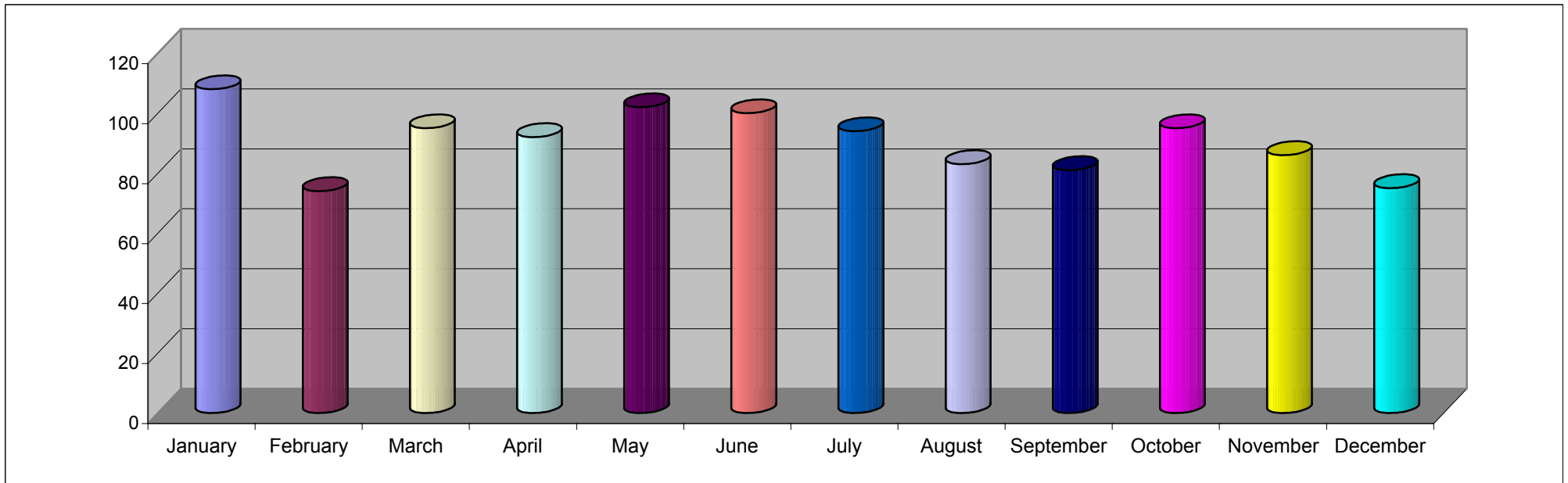
Month	2002	2001	2000	1999	1998
January	108	64	71	65	78
February	74	72	57	66	68
March	95	93	69	58	73
April	92	82	86	78	81
May	102	76	64	65	50
June	100	73	65	67	48
July	94	89	82	63	54
August	83	71	65	77	62
September	81	93	89	70	52
October	95	86	55	73	47
November	86	71	49	69	74
December	75	79	62	58	23



# LOGAN-ROGERSVILLE FIRE PROTECTION DISTRICT

3427 South State Hwy 125  
Rogersville, MO 65742  
(417) 753-4265

## NUMBER OF EMERGENCY CALLS PER MONTH DURING THE YEAR OF 2002



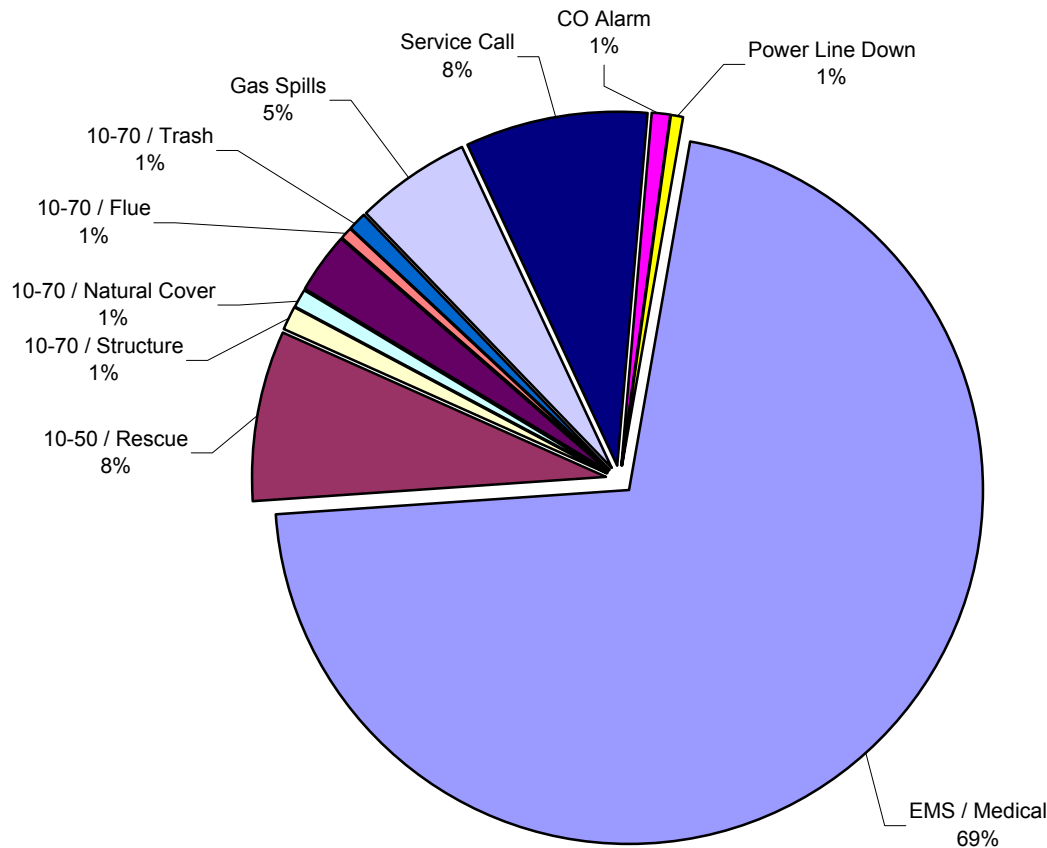
Month	2002
January	108
February	74
March	95
April	92
May	102
June	100
July	94
August	83
September	81
October	95
November	86
December	75



# LOGAN-ROGERSVILLE FIRE PROTECTION DISTRICT

3427 South State Hwy 125  
Rogersville, MO 65742  
(417) 753-4265

## TYPE AND NUMBER OF EMERGENCY CALLS RUN WITHIN CITY OF ROGERSVILLE RAN DURING THE YEAR OF 2002



Type	# of Calls	Percentage
EMS / Medical	104	71.23%
10-50 / Rescue	11	7.53%
10-70 / Structure	2	1.37%
10-70 / Natural Cover	1	0.68%
10-70 / Vehicle	4	2.74%
10-70 / Flue	1	0.68%
10-70 / Trash	1	0.68%
Gas Spills	8	5.48%
Service Call	12	8.22%
CO Alarm	1	0.68%
Power Line Down	1	0.68%

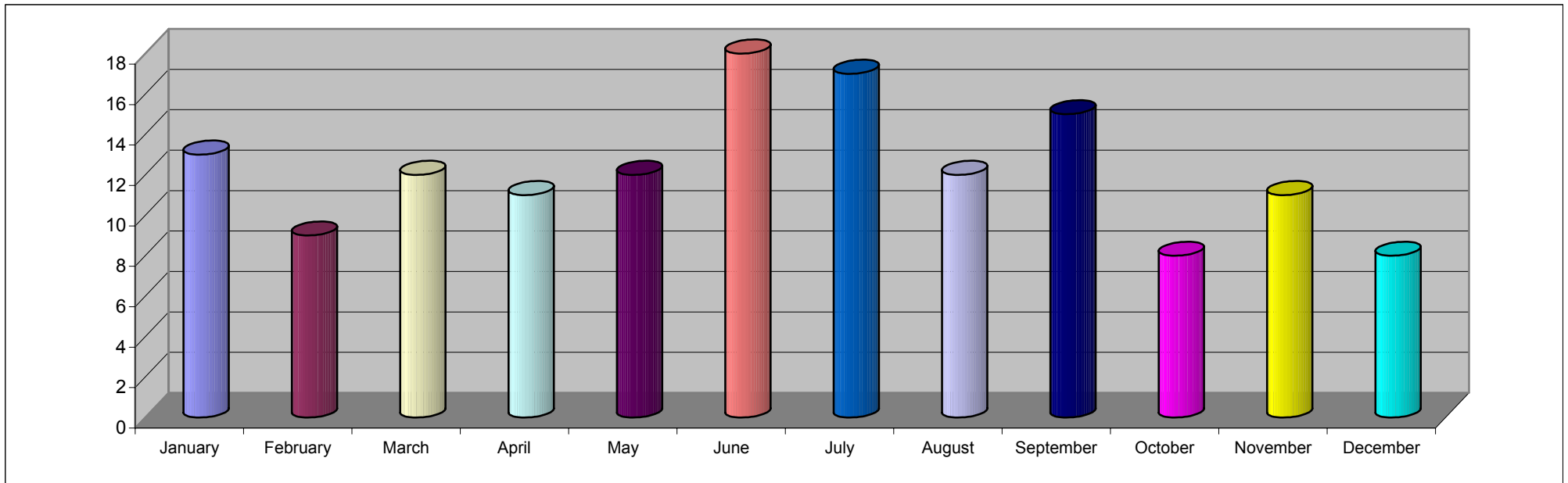
**Total Number: 146**



# LOGAN-ROGERSVILLE FIRE PROTECTION DISTRICT

3427 South State Hwy 125  
Rogersville, MO 65742  
(417) 753-4265

## NUMBER OF EMERGENCY CALLS RUN PER MONTH WITHIN CITY OF ROGERSVILLE DURING THE YEAR OF 2002



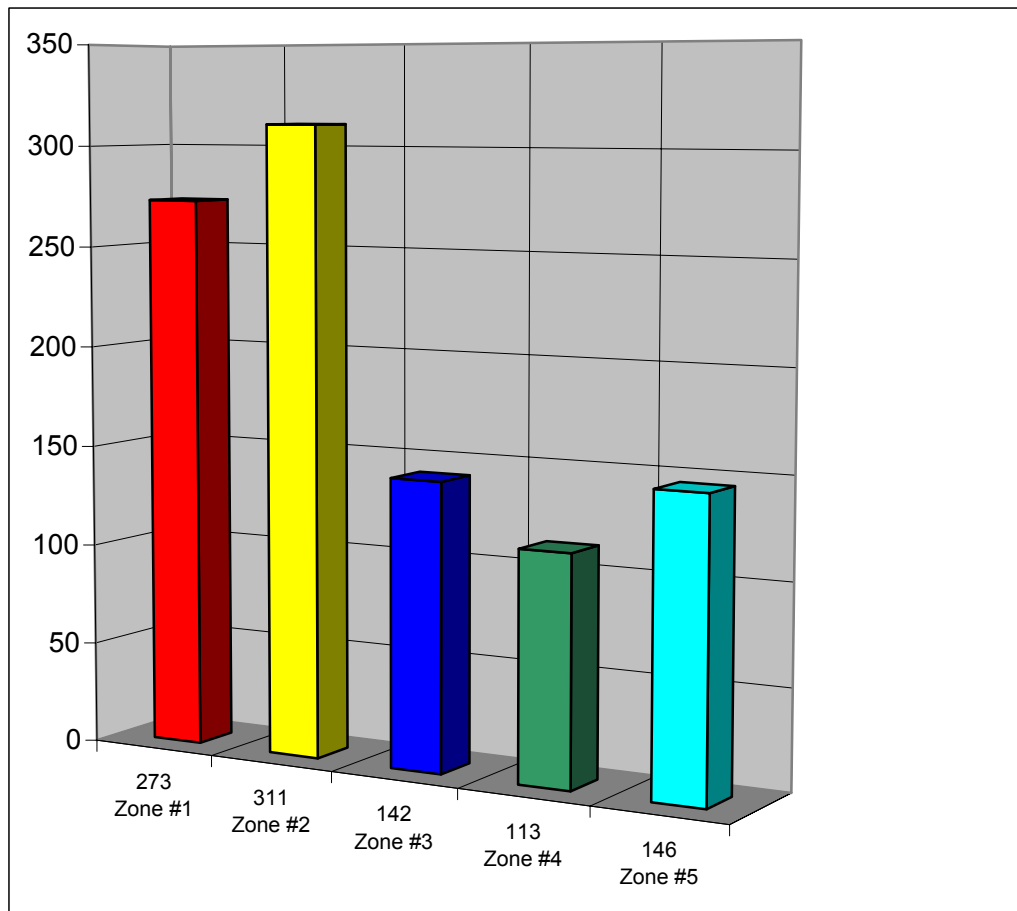
Month	2002
January	13
February	9
March	12
April	11
May	12
June	18
July	17
August	12
September	15
October	8
November	11
December	8



# LOGAN-ROGERSVILLE FIRE PROTECTION DISTRICT

3427 South State Hwy 125  
Rogersville, MO 65742  
(417) 753-4265

## EMERGENCY CALLS RUN PER STATION ZONE DURING THE YEAR OF 2002



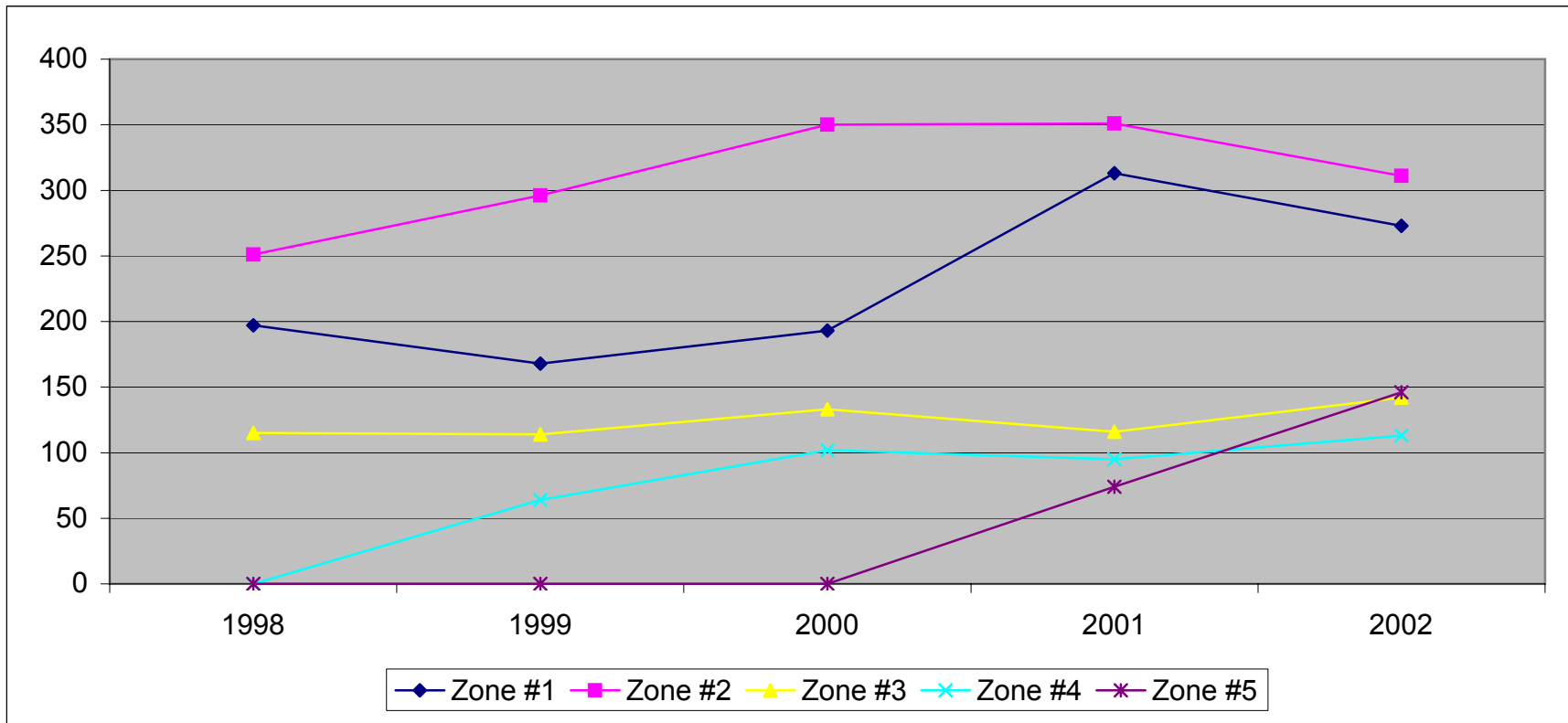
	Zone #1	Zone #2	Zone #3	Zone #4	Zone #5
	273	311	142	113	146
Total:	273	311	142	113	146



# LOGAN-ROGERSVILLE FIRE PROTECTION DISTRICT

3427 South State Hwy 125  
Rogersville, MO 65742  
(417) 753-4265

## EMERGENCY CALLS RUN PER STATION ZONE > 1998 THROUGH 2002 <



STATION ZONE	1998	1999	2000	2001	2002
Zone #1	197	168	193	313	273
Zone #2	251	296	350	351	311
Zone #3	115	114	133	116	142
Zone #4	0	64	102	95	113
Zone #5	0	0	0	74	146

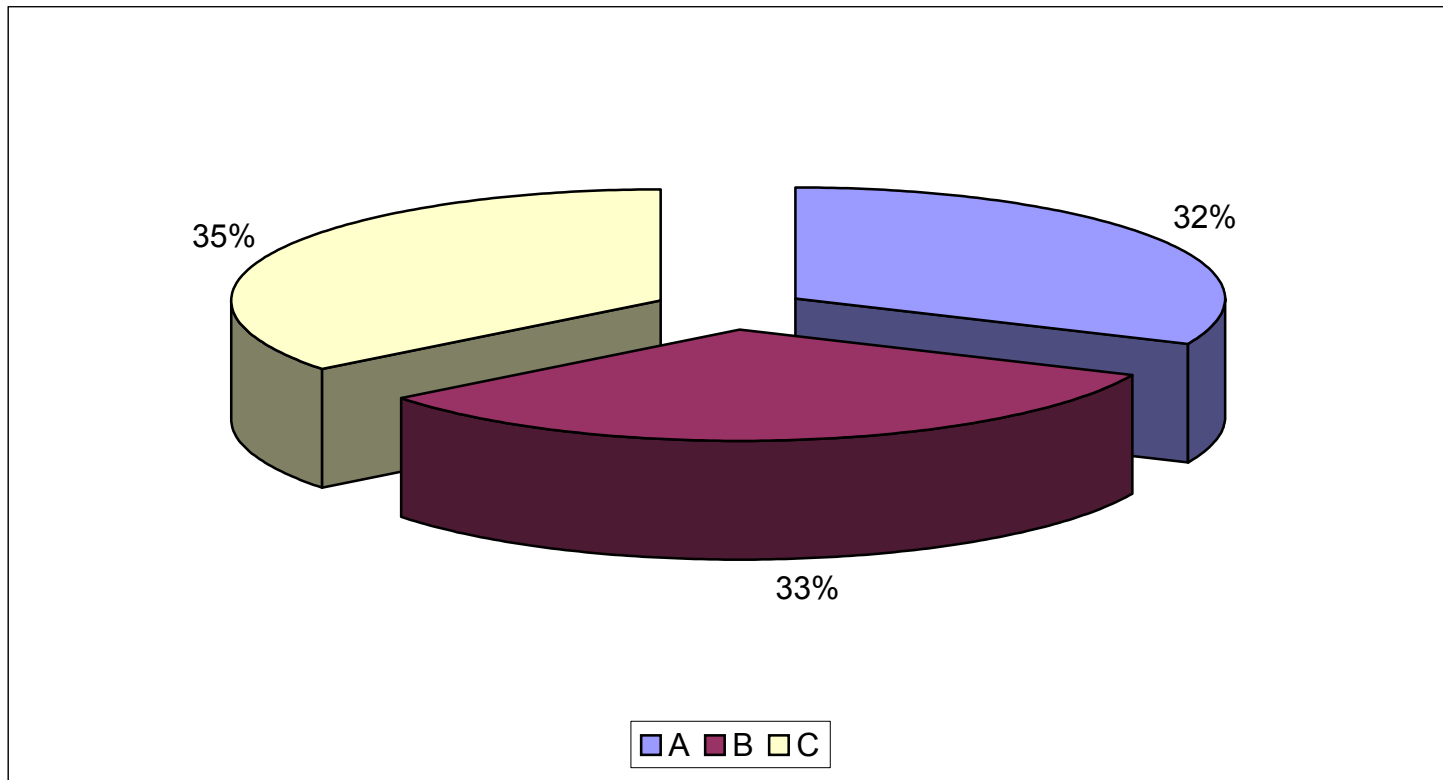




# LOGAN-ROGERSVILLE FIRE PROTECTION DISTRICT

3427 South State Hwy 125  
Rogersville, MO 65742  
(417) 753-4265

## EMERGENCY CALLS RUN PER SHIFT DURING THE YEAR OF 2002



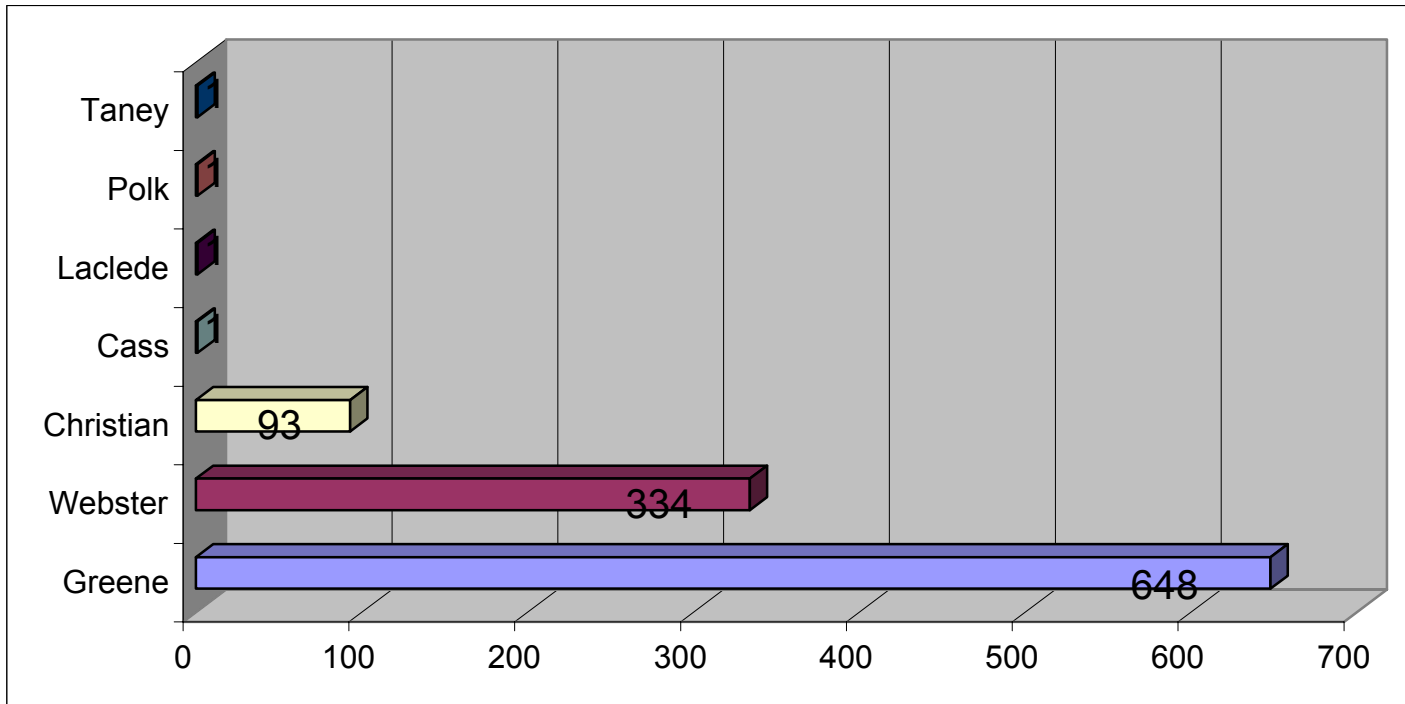
Shift	# of Calls	Percent
A	345	36.35%
B	355	37.41%
C	385	40.57%



# LOGAN-ROGERSVILLE FIRE PROTECTION DISTRICT

3427 South State Hwy 125  
Rogersville, MO 65742  
(417) 753-4265

## EMERGENCY CALLS RUN PER COUNTY DURING THE YEAR OF 2002



County	# of Calls	Percent
Greene	648	59.72%
Webster	334	30.78%
Christian	93	8.57%
Cass	1	0.09%
Laclede	1	0.09%
Polk	1	0.09%
Taney	1	0.09%



# LOGAN-ROGERSVILLE FIRE PROTECTION DISTRICT

3427 South State Hwy 125  
Rogersville, MO 65742  
(417) 753-4265

## EMERGENCY CALLS RUN PER APPARATUS DURING THE YEAR OF 2002

Apparatus	2002	2001	2000	1999	1998	1997	1996	1995
Brush 123	9	11	0	0	0	0	0	0
Brush 124	84	51	0	0	0	0	0	0
Brush 321	84	101	135	90	53	76	156	100
Brush 422	98	41	63	82	34	58	43	64
Engine 434	64	78	212	100	211	365	432	350
Engine 135	500	316	0	0	0	0	0	0
Engine 233	271	288	375	461	79	0	0	0
Engine 332	0	9	38	75	59	40	80	29
Engine 331	17	31	41	50	0	0	0	0
Haz-Mat 302	5	14	4	10	8	0	0	0
Rescue 111	566	520	265	97	141	120	193	110
Rescue 212	0	43	111	172	204	202	224	190
Service Van 201	3	0	0	0	0	0	0	0
Tanker 143	32	27	32	24	17	21	31	31
Tanker 242	38	16	19	24	32	41	35	25
Tanker 341	33	34	52	45	34	35	29	13
Tanker 444	20	10	7	5	0	0	0	0
Truck 252	43	54	57	118	130	158	160	130
Truck 651	155	0	0	0	0	0	0	0



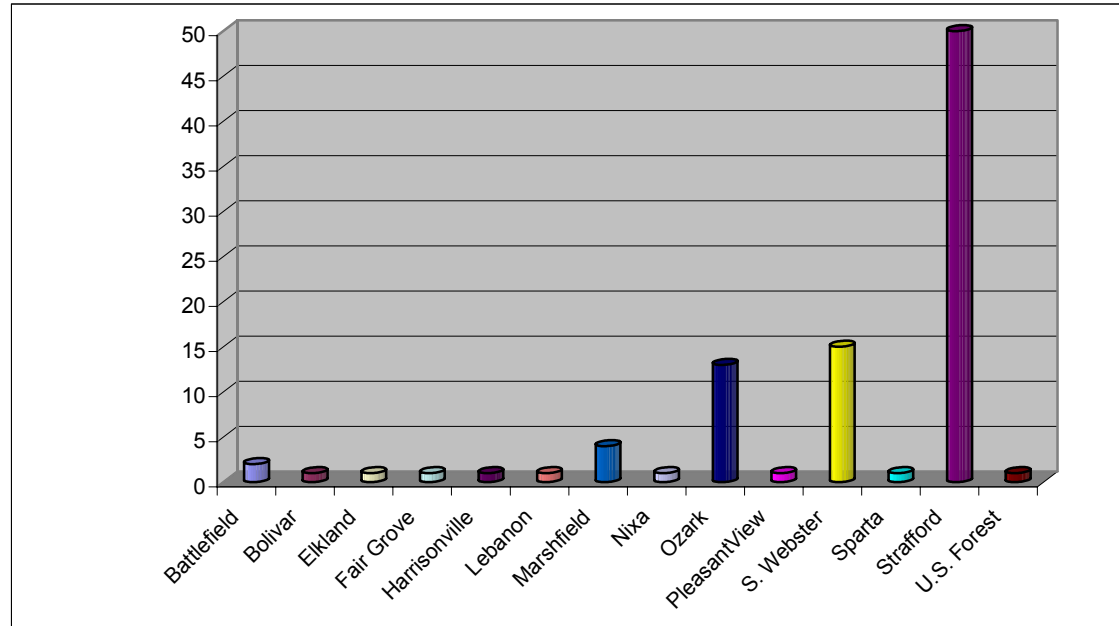
# LOGAN-ROGERSVILLE FIRE PROTECTION DISTRICT

3427 South State Hwy 125  
Rogersville, MO 65742  
(417) 753-4265

## NUMBER OF CALLS IN WHICH MUTUAL AID WAS PROVIDED DURING THE YEAR OF 2002

Departments That We Provided  
Aid To During Year 2001:

Department	# of Calls
Battlefield	2
Bolivar	1
Elkland	1
Fair Grove	1
Harrisonville	1
Lebanon	1
Marshfield	4
Nixa	1
Ozark	13
Pleasant View	1
Southern Webster	15
Sparta	1
Starfford	50
U.S. Forest Service	1



Battlefield	2
Bolivar	1
Elkland	1
Fair Grove	1
Harrisonville	1
Lebanon	1
Marshfield	4
Nixa	1
Ozark	13
PleasantView	1
S. Webster	15
Sparta	1
Starfford	50
U.S. Forest	1
<b>Total:</b>	<b>93</b>



# LOGAN-ROGERSVILLE FIRE PROTECTION DISTRICT

3427 South State Hwy 125

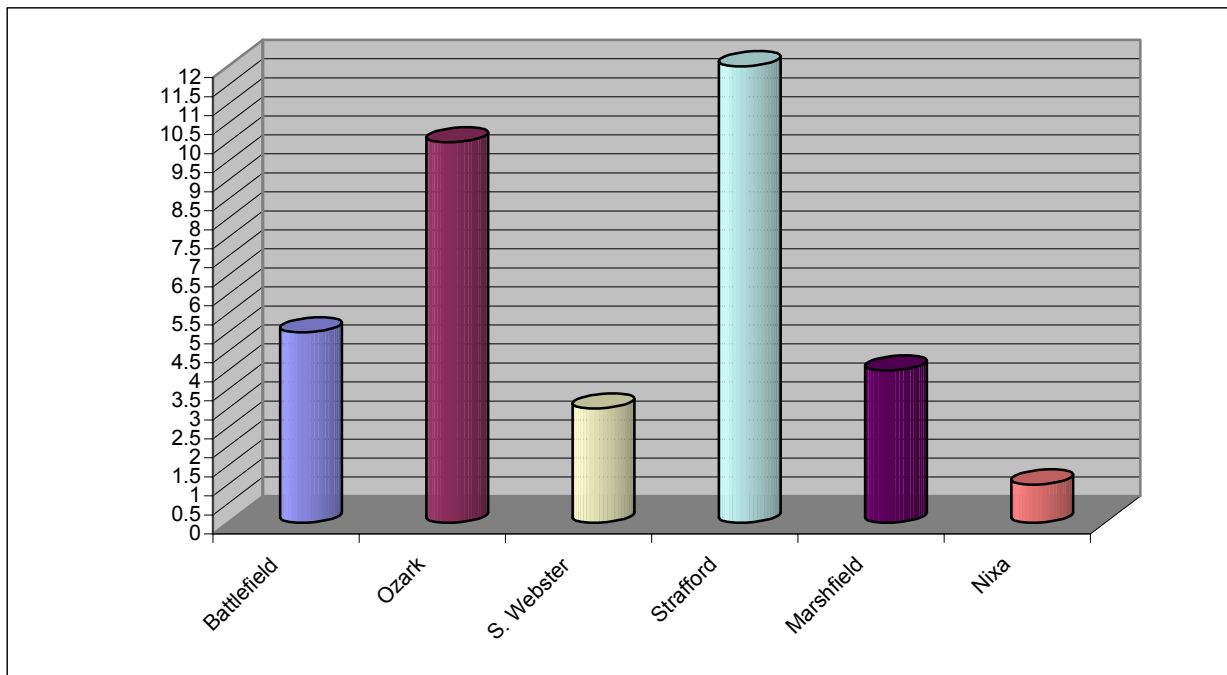
Rogersville, MO 65742

(417) 753-4265

## NUMBER OF CALLS IN WHICH MUTUAL AID WAS RECEIVED DURING THE YEAR OF 2002

Departments That We Received  
Aid From During Year 2001:

Department	# of Calls
Battlefield	5
Ozark	10
Southern Webster	3
Strafford	12
Marshfield	4
Nixa	1



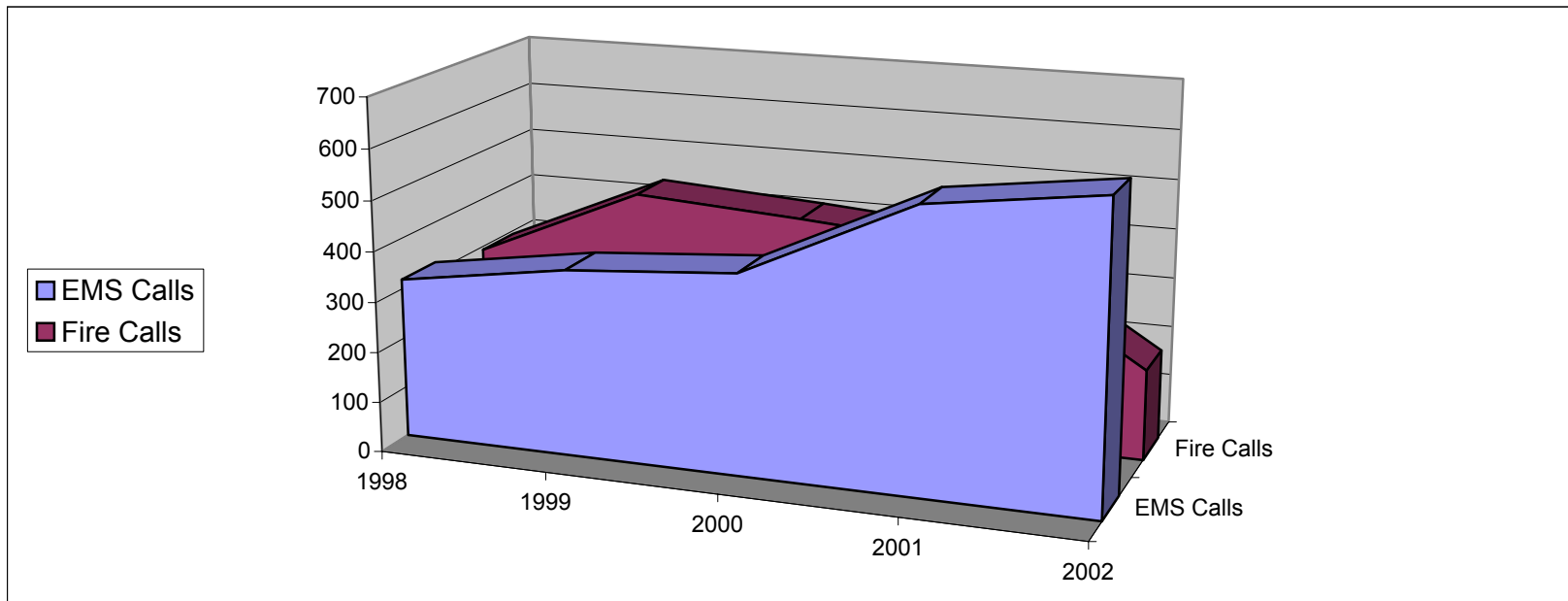
Battlefield	5
Ozark	10
S. Webster	3
Strafford	12
Marshfield	4
Nixa	1
<b>Total:</b>	<b>35</b>



# LOGAN-ROGERSVILLE FIRE PROTECTION DISTRICT

3427 South State Hwy 125  
Rogersville, MO 65742  
(417) 753-4265

## TOTAL RESPONSE OF EMS VS. FIRE CALLS > 1998 THROUGH 2002 <



Year	No. of		No. of		Total Calls Per Year
	EMS Calls	Percentage	Fire Calls	Percentage	
1998	319	52.12%	293	47.88%	612
1999	370	45.74%	439	54.26%	809
2000	396	48.65%	418	51.35%	814
2001	557	58.69%	392	41.31%	949
2002	602	58.00%	180	17.34%	1038



# LOGAN-ROGERSVILLE FIRE PROTECTION DISTRICT

3427 South State Hwy 125  
Rogersville, MO 65742  
(417) 753-4265

## Truck Maintenance Report 2002

	MILEAGE	TOTAL FUEL (Gal.)	FUEL COST	REPAIR COST	TOTAL COST	NUMBER OF CALLS
B123	UNKNOWN	51.7	\$ 66.76	\$ 236.79	\$ 303.55	9
B124	10381	1255.6	\$ 1,569.10	\$ 560.66	\$ 2,129.76	84
B125	NOT IN	SERVICE	IN 2002	\$ -	\$ -	0
B321	1537	427.5	\$ 531.79	\$ 479.41	\$ 1,011.20	84
B422	4023	553.9	\$ 729.42	\$ 250.99	\$ 980.41	98
CAR1	18703	1477.7	\$ 1,883.08	\$ 248.30	\$ 2,131.38	229
E135	8983	1786.8	\$ 2,253.19	\$ 1,386.23	\$ 3,639.42	500
E233	4237	639	\$ 809.56	\$ 1,265.66	\$ 2,075.22	271
E331	788	289	\$ 380.46	\$ 737.31	\$ 1,117.77	17
E434	1705	337.1	\$ 421.12	\$ 244.05	\$ 665.17	64
R111	9717	1601.6	\$ 2,039.18	\$ 606.46	\$ 2,645.64	566
R212	UNKNOWN	83.7	\$ 98.06	\$ -	\$ 98.06	0
S201	3540	381.2	\$ 482.12	\$ 223.60	\$ 705.72	3
S302	284	23.3	\$ 26.10	\$ -	\$ 26.10	5
T143	960	256.5	\$ 325.71	\$ 865.37	\$ 1,191.08	32
T242	1029	303.3	\$ 382.29	\$ 1,603.61	\$ 1,985.90	38
T341	1028	188	\$ 323.09	\$ 109.96	\$ 433.05	33
T444	550	177.8	\$ 228.37	\$ 485.16	\$ 713.53	20
TK252	1035	266.2	\$ 332.71	\$ 94.99	\$ 427.70	20
TK651	2013	573.7	\$ 736.21	\$ 289.36	\$ 1,025.57	155
<b>TOTAL</b>	70513	10673.6	\$ 13,527.92	\$ 9,687.91	\$ 23,306.23	2228



# LOGAN-ROGERSVILLE FIRE PROTECTION DISTRICT

3427 South State Hwy 125  
Rogersville, MO 65742  
(417) 753-4265

## Apparatus Summary For The Year 2002 APPARATUS SUMMARY

<b>ENGINES</b>	<b>YEAR</b>	<b>MAKE</b>
434	1992	FREIGHTLINER
135	2000	INTERNATIONAL
233	1997	INTERNATIONAL
331	1973	FORD
<b>RESCUES</b>	<b>YEAR</b>	<b>MAKE</b>
111	1995	INTERNATIONAL
<b>BRUSH</b>	<b>YEAR</b>	<b>MAKE</b>
422	1995	FORD
321	1993	FORD
123	1977	DODGE
125	1983	DODGE
124	1985	DODGE
<b>TRUCK</b>	<b>YEAR</b>	<b>MAKE</b>
252	1987	GMC
651	1985	HAHN
<b>TANKER</b>	<b>YEAR</b>	<b>MAKE</b>
143	1987	GMC
242	1992	INTERNATIONAL
341	1996	INTERNATIONAL
444	1971	GMC
<b>SERVICE</b>	<b>YEAR</b>	<b>MAKE</b>
CAR 1	2001	CHEVROLET
201	1985	DODGE
302	1974	CHEVROLET
HAZMAT TRAILER	2002	HAULMARK