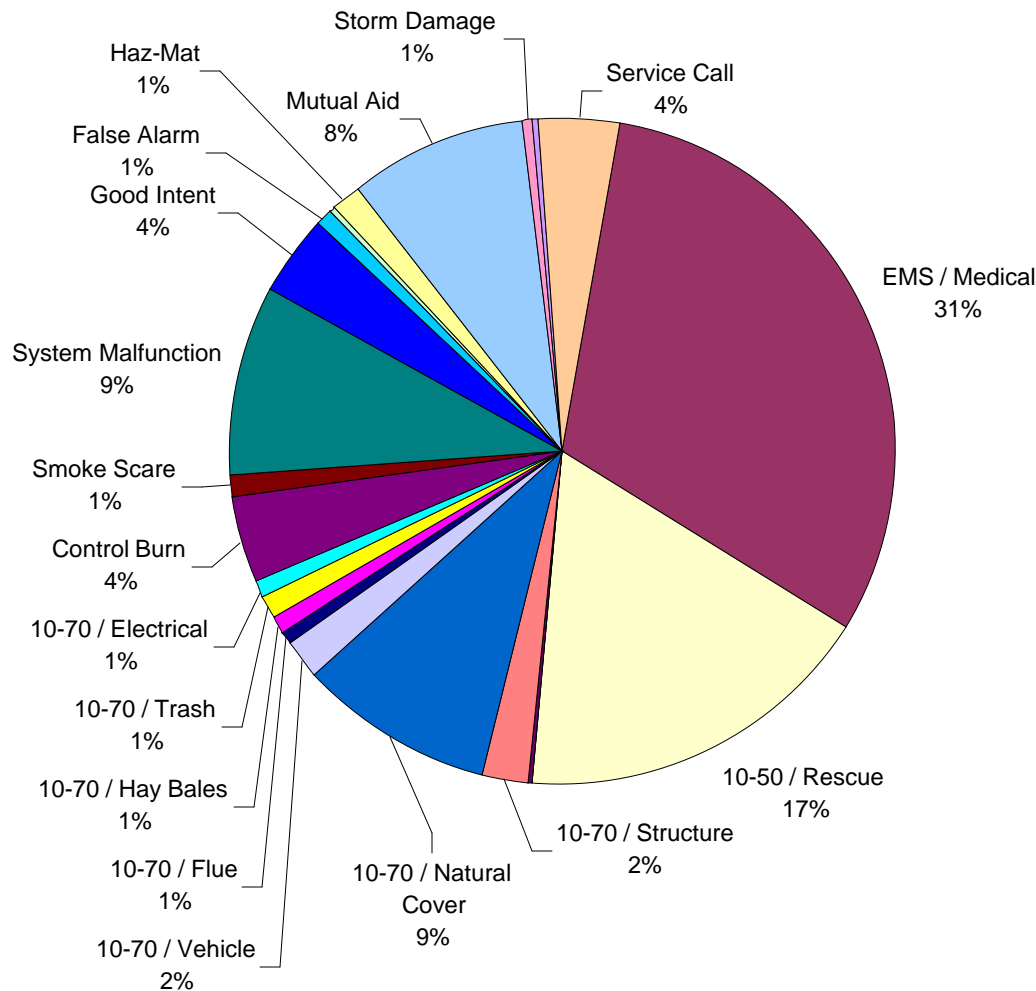




LOGAN-ROGERSVILLE FIRE PROTECTION DISTRICT

3427 South State Hwy 125
Rogersville, MO 65742
(417) 753-4265

TYPE AND NUMBER OF EMERGENCY CALLS RAN DURING THE YEAR OF 2000



Type	# of Calls	Percentage
EMS / Medical	253	31.08%
10-50 / Rescue	142	17.44%
Search / Rescue	1	0.12%
Water / Rescue	1	0.12%
10-70 / Structure	18	2.21%
10-70 / Natural Cover	77	9.46%
10-70 / Vehicle	17	2.09%
10-70 / Flue	5	0.61%
10-70 / Hay Bales	6	0.74%
10-70 / Trash	8	0.98%
10-70 / Electrical	7	0.86%
Control Burn	34	4.18%
Smoke Scare	9	1.11%
System Malfunction	75	9.21%
Good Intent	33	4.05%
False Alarm	6	0.74%
Flood Control	0	0.00%
Bomb Scare	3	0.37%
Haz-Mat	11	1.35%
Mutual Aid	69	8.48%
Storm Damage	6	0.74%
Weather Watch	2	0.25%
Service Call	31	3.81%

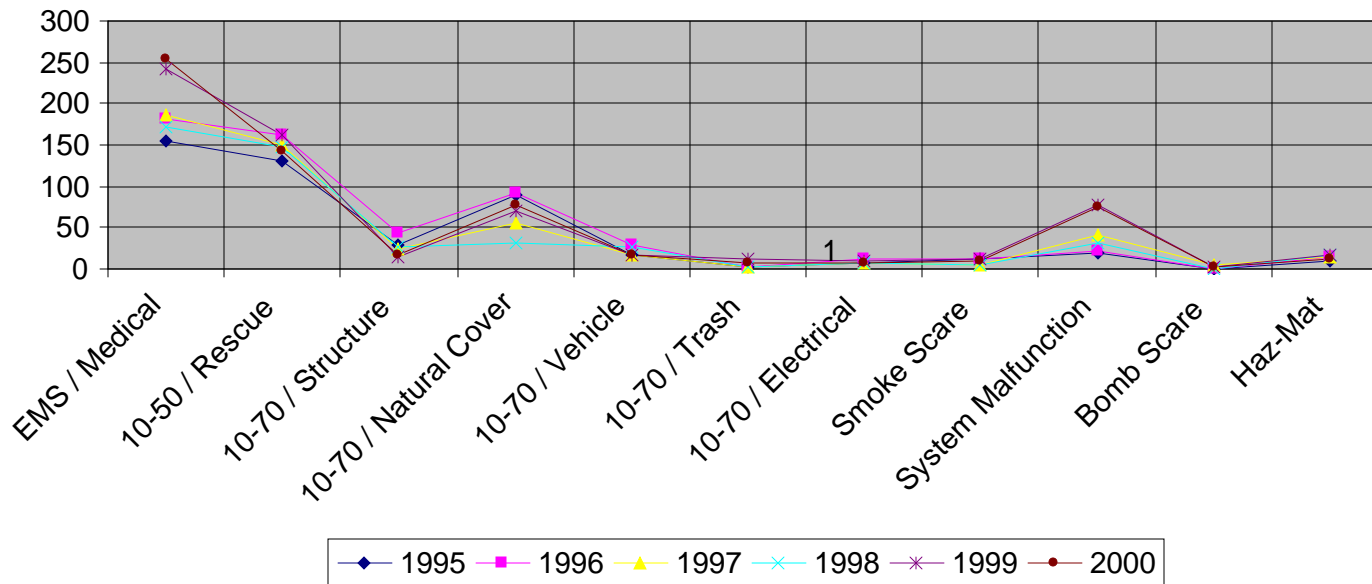
Total Number: 814



LOGAN-ROGERSVILLE FIRE PROTECTION DISTRICT

3427 South State Hwy 125
Rogersville, MO 65742
(417) 753-4265

TYPE OF EMERGENCY CALLS PER YEAR > 1995 THROUGH 2000 <



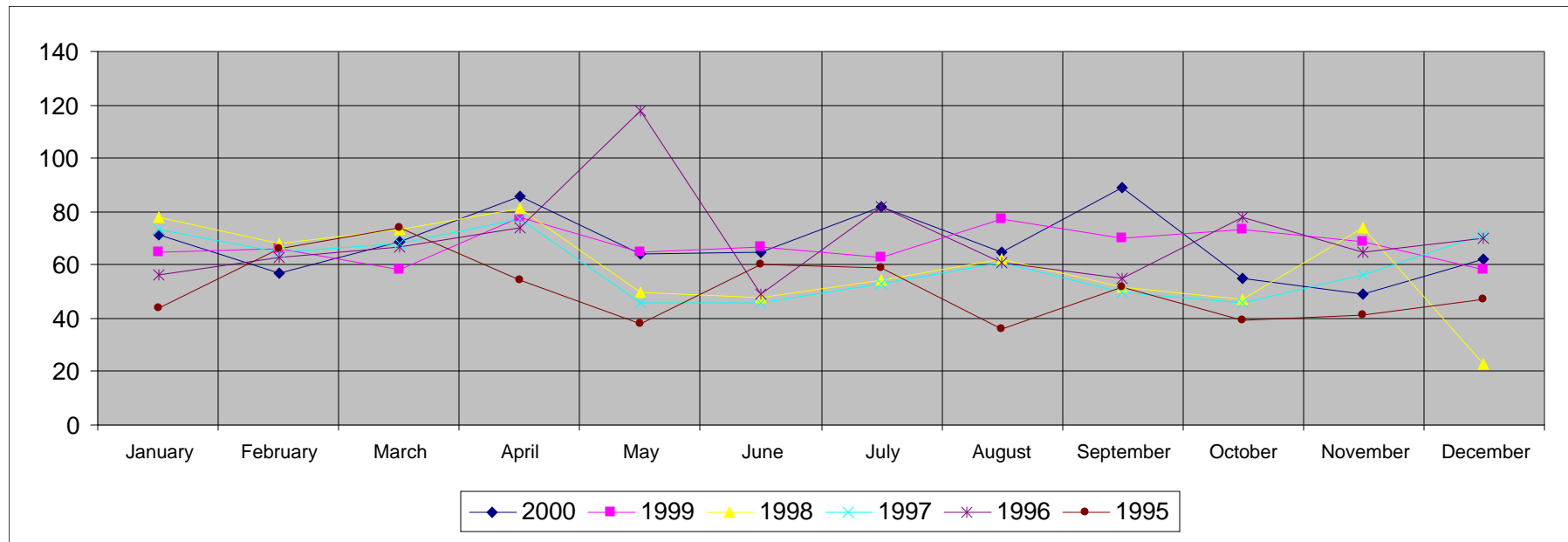
Type	1995	1996	1997	1998	1999	2000
EMS / Medical	154	181	187	171	241	253
10-50 / Rescue	130	161	149	148	163	142
10-70 / Structure	30	43	24	26	14	18
10-70 / Natural Cover	90	93	56	32	71	77
10-70 / Vehicle	17	29	18	26	17	17
10-70 / Trash	3	2	2	2	11	8
10-70 / Electrical	7	13	8	7	9	7
Smoke Scare	11	13	5	5	12	9
System Malfunction	19	22	42	31	77	75
Bomb Scare	0	1	4	0	2	3
Haz-Mat	10	14	14	18	16	11



LOGAN-ROGERSVILLE FIRE PROTECTION DISTRICT

3427 South State Hwy 125
Rogersville, MO 65742
(417) 753-4265

NUMBER OF EMERGENCY CALLS PER MONTH > 1995 THROUGH 2000 <



Month	2000	1999	1998	1997	1996	1995
January	71	65	78	73	56	44
February	57	66	68	65	63	66
March	69	58	73	68	67	74
April	86	78	81	77	74	54
May	64	65	50	46	118	38
June	65	67	48	46	49	60
July	82	63	54	53	82	59
August	65	77	62	61	61	36
September	89	70	52	50	55	52
October	55	73	47	46	78	39
November	49	69	74	56	65	41

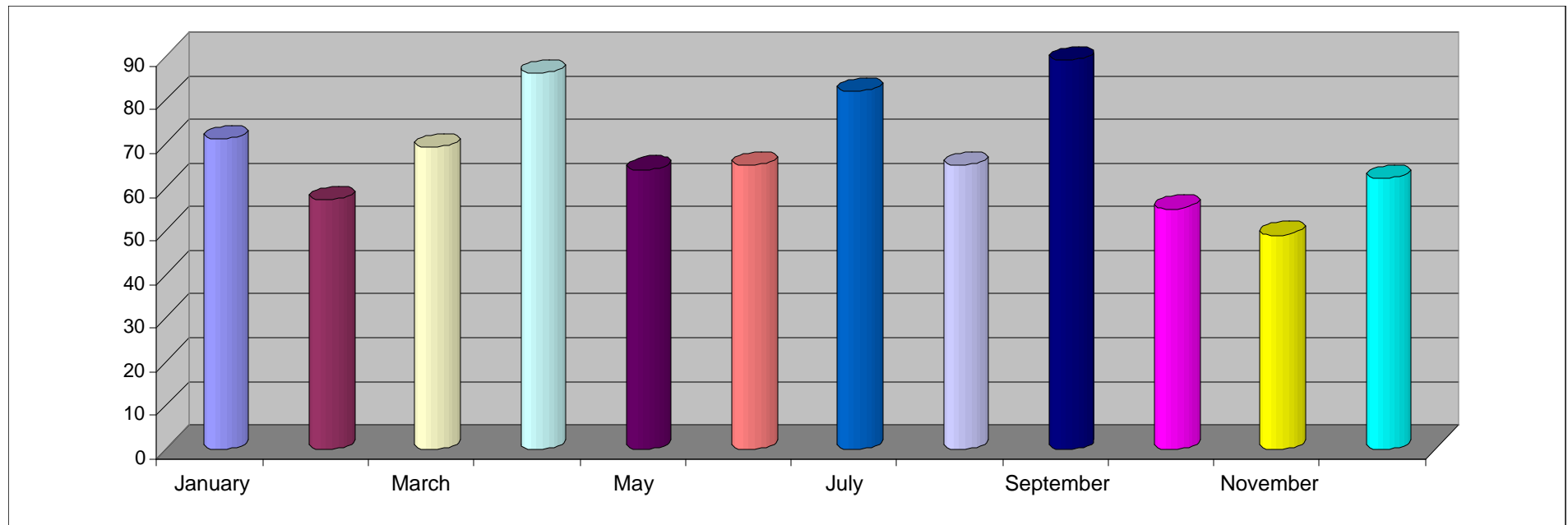
December	62	58	23	71	70	47
-----------------	----	----	----	----	----	----



LOGAN-ROGERSVILLE FIRE PROTECTION DISTRICT

3427 South State Hwy 125
Rogersville, MO 65742
(417) 753-4265

NUMBER OF EMERGENCY CALLS PER MONTH DURING THE YEAR OF 2000



Month	2000
January	71
February	57
March	69
April	86
May	64
June	65
July	82
August	65
September	89
October	55
November	49

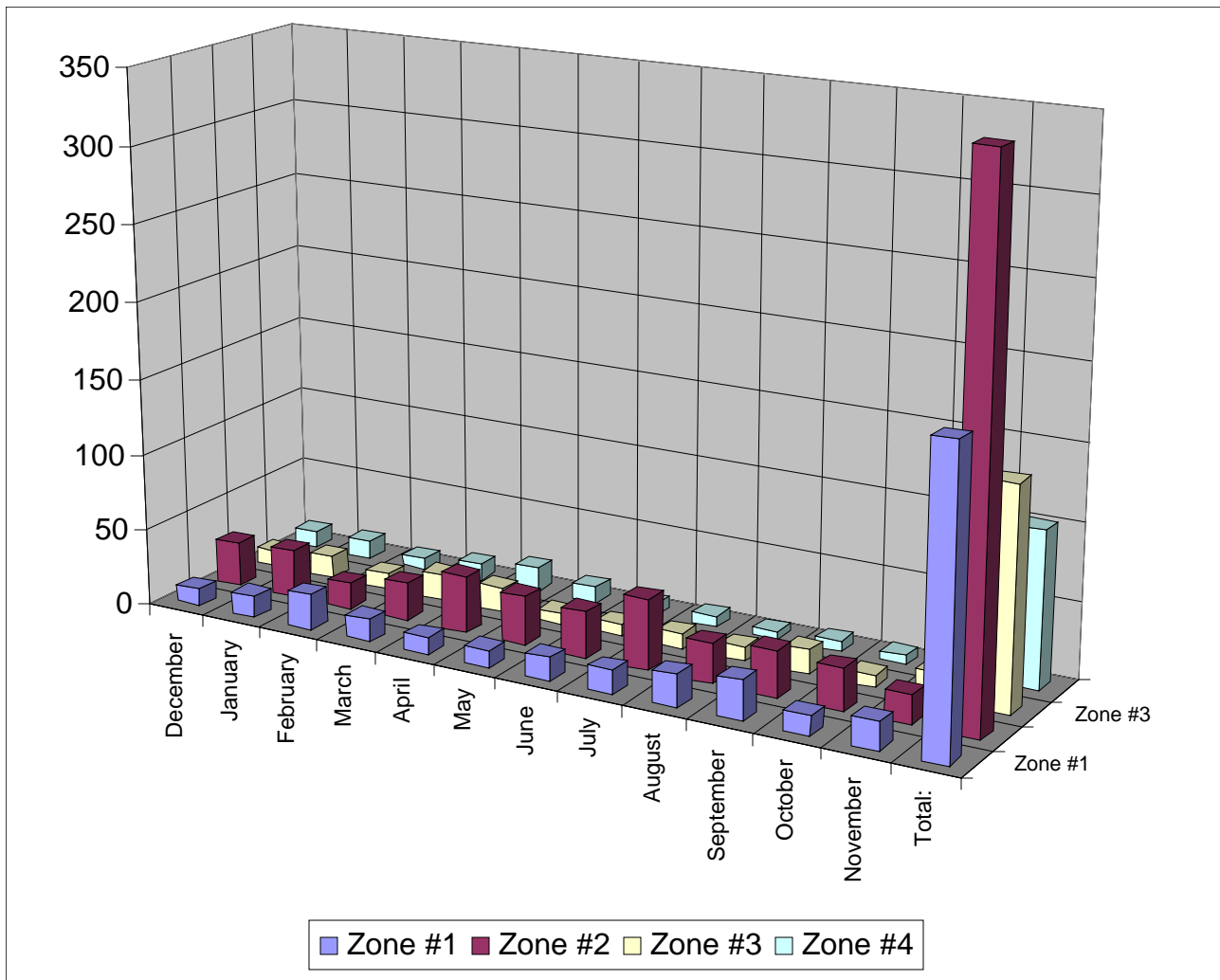
December	62
-----------------	----



LOGAN-ROGERSVILLE FIRE PROTECTION DISTRICT

3427 South State Hwy 125
Rogersville, MO 65742
(417) 753-4265

EMERGENCY CALLS RAN PER STATION ZONE DURING THE YEAR OF 2000



	Zone #1	Zone #2	Zone #3	Zone #4
December	11	29	10	11
January	14	31	14	12
February	23	17	10	7
March	15	25	17	11
April	11	37	16	16
May	11	32	7	11
June	15	30	8	7
July	15	46	10	7
August	21	26	9	5
September	26	30	16	7
October	13	27	8	6
November	18	19	18	2
Total:	193	349	143	102

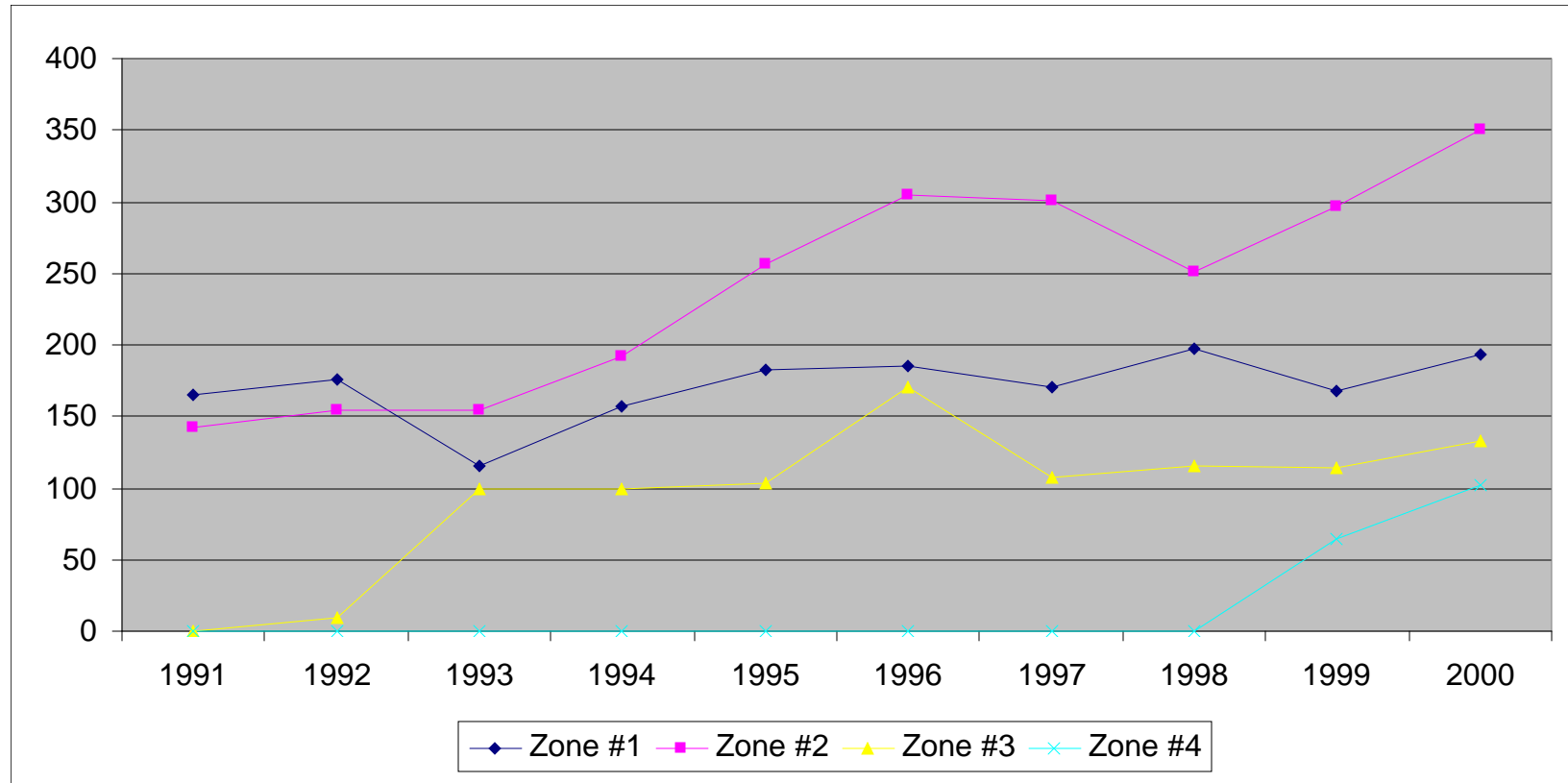




LOGAN-ROGERSVILLE FIRE PROTECTION DISTRICT

3427 South State Hwy 125
Rogersville, MO 65742
(417) 753-4265

EMERGENCY CALLS RAN PER STATION ZONE > 1991 THROUGH 2000 <



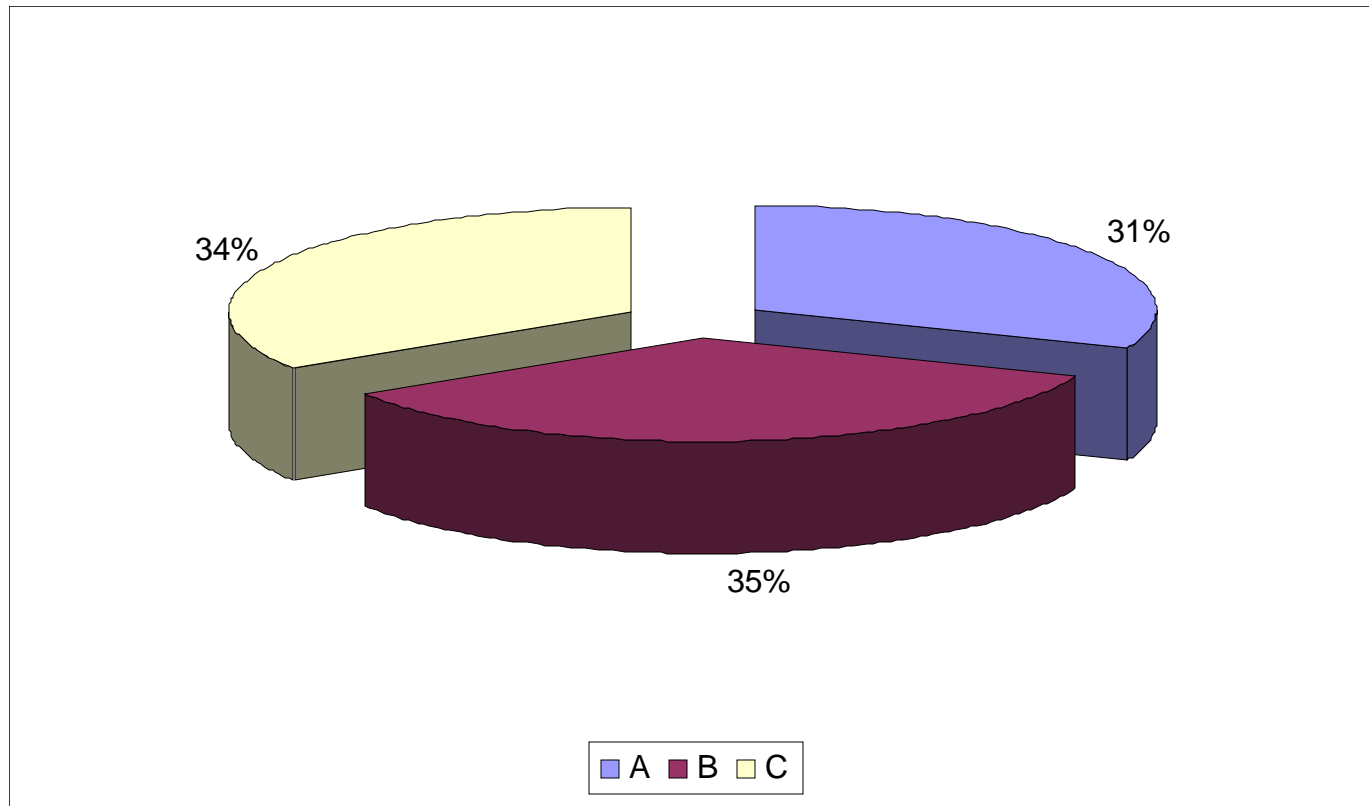
STATION ZONE	1991	1992	1993	1994	1995	1996	1997	1998	1999	2000
Zone #1	165	176	116	157	183	185	170	197	168	193
Zone #2	142	155	155	192	257	305	301	251	296	350
Zone #3	0	10	100	99	104	170	107	115	114	133
Zone #4	0	0	0	0	0	0	0	0	64	102



LOGAN-ROGERSVILLE FIRE PROTECTION DISTRICT

3427 South State Hwy 125
Rogersville, MO 65742
(417) 753-4265

EMERGENCY CALLS RAN PER SHIFT DURING THE YEAR OF 2000



Shift	# of Calls	Percent
A	253	31.08%
B	283	34.77%
C	278	34.15%



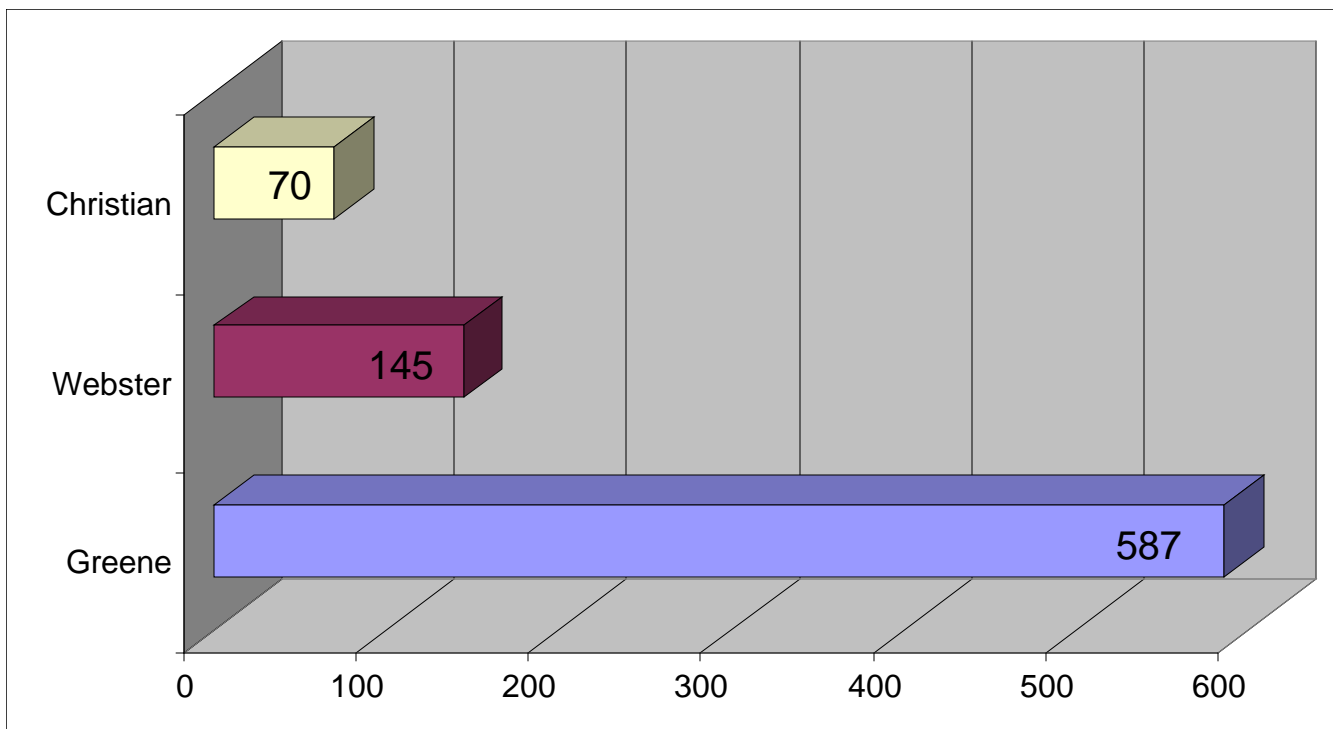
LOGAN-ROGERSVILLE FIRE PROTECTION DISTRICT

3427 South State Hwy 125

Rogersville, MO 65742

(417) 753-4265

EMERGENCY CALLS RAN PER COUNTY DURING THE YEAR OF 2000



County	# of Calls	Percent
Greene	587	73.19%
Webster	145	18.08%
Christian	70	8.73%



LOGAN-ROGERSVILLE FIRE PROTECTION DISTRICT

3427 South State Hwy 125
Rogersville, MO 65742
(417) 753-4265

EMERGENCY CALLS RAN PER APPARATUS DURING THE YEAR OF 2000

Apparatus	2000	1999	1998	1997	1996	1995	1994	1993
Brush 321	135	90	53	76	156	100	16	0
Brush 422	63	82	34	58	43	64	32	57
Engine 134	212	100	211	365	432	350	235	44
Engine 233	375	461	79	0	0	0	0	0
Engine 332	38	75	59	40	80	29	51	32
Engine 431	41	50	0	0	0	0	0	0
Haz-Mat 302	4	10	8	0	0	0	0	0
Rescue 111	265	97	141	120	193	110	80	0
Rescue 212	111	172	204	202	224	190	145	130
Tanker 143	32	24	17	21	31	31	30	26
Tanker 242	19	24	32	41	35	25	14	25
Tanker 341	52	45	34	35	29	13	57	22
Tanker 444	7	5	0	0	0	0	0	0
Truck 252	57	118	130	158	160	130	0	0



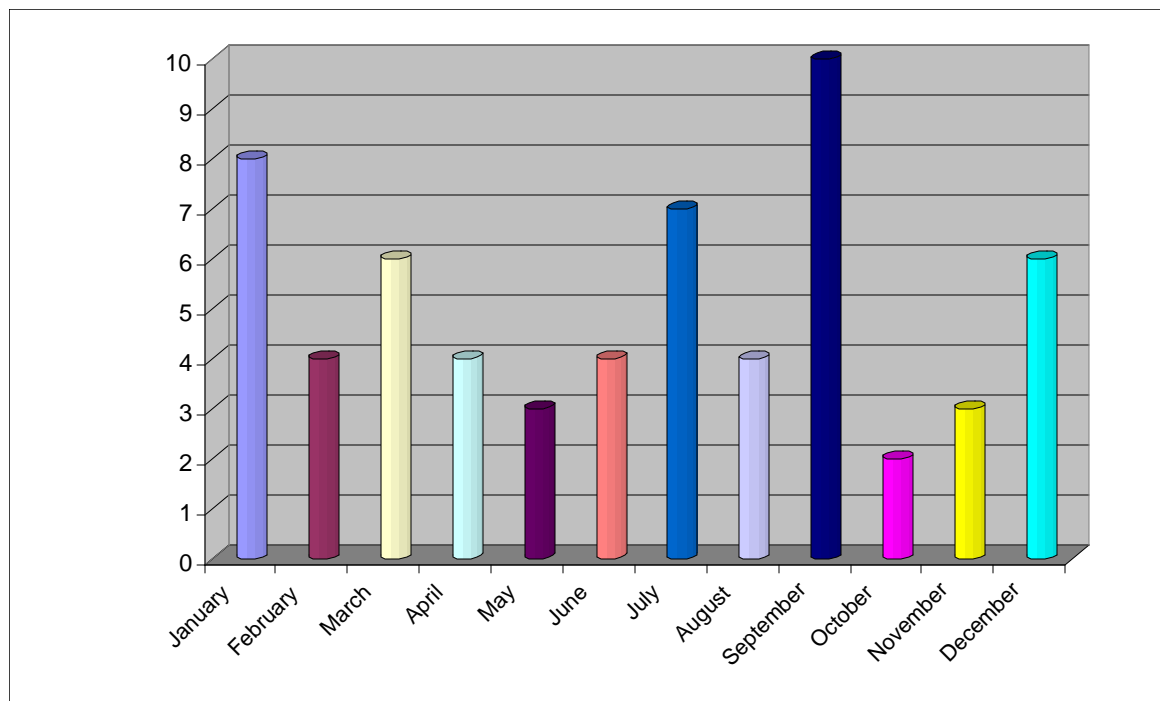
LOGAN-ROGERSVILLE FIRE PROTECTION DISTRICT

3427 South State Hwy 125
Rogersville, MO 65742
(417) 753-4265

NUMBER OF CALLS IN WHICH MUTUAL AID WAS PROVIDED DURING THE YEAR OF 2000

Departments That We Provided Aid To During Year 2000:

Department	# of Calls
Battlefield	3
Camden Co.	2
City of Rogersville	9
City of Springfield	3
Ebenezer	1
Fair Grove	1
Marshfield	1
Ozark	6
Pleasant View	1
Southern Webster	12
Sparta	5
Strafford	18
U.S. Forest Service	1



January	8
February	4
March	6
April	4
May	3
June	4
July	7
August	4
September	10
October	2
November	3
December	6
Total:	61



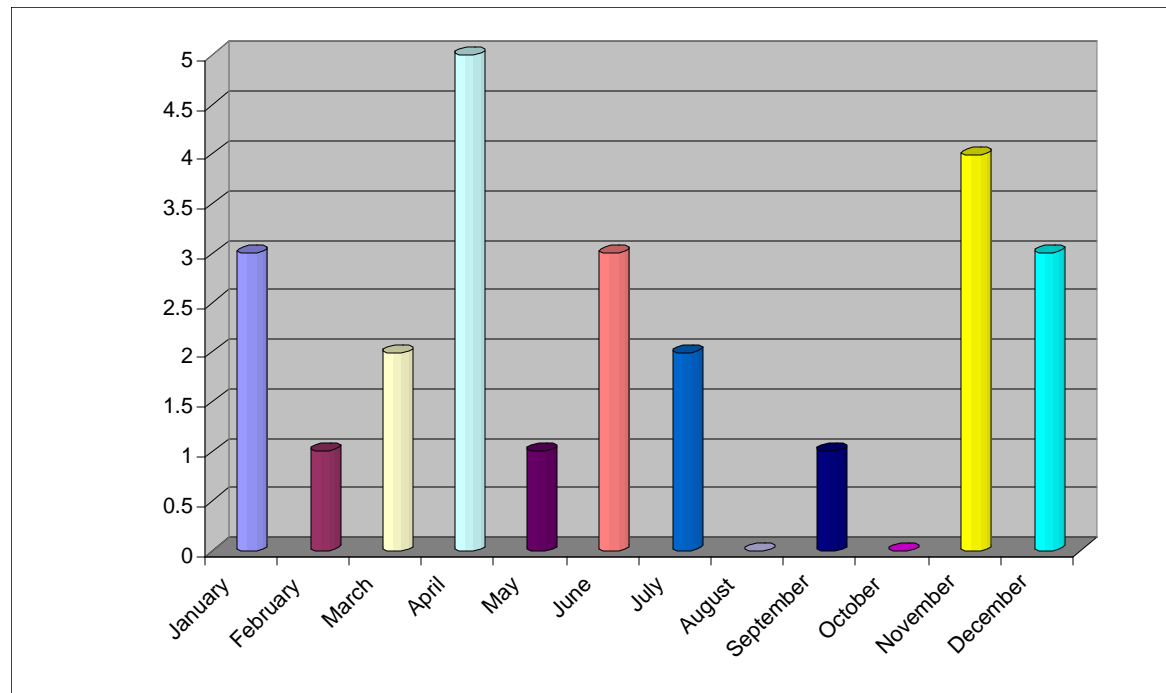
LOGAN-ROGERSVILLE FIRE PROTECTION DISTRICT

3427 South State Hwy 125
Rogersville, MO 65742
(417) 753-4265

NUMBER OF CALLS IN WHICH MUTUAL AID WAS RECEIVED DURING THE YEAR OF 2000

Departments That We Received Aid From During Year 2000:

Department	# of Calls
Battlefield	2
City of Rogersville	5
City of Springfield	2
Ozark	3
Southern Webster	3
Strafford	8



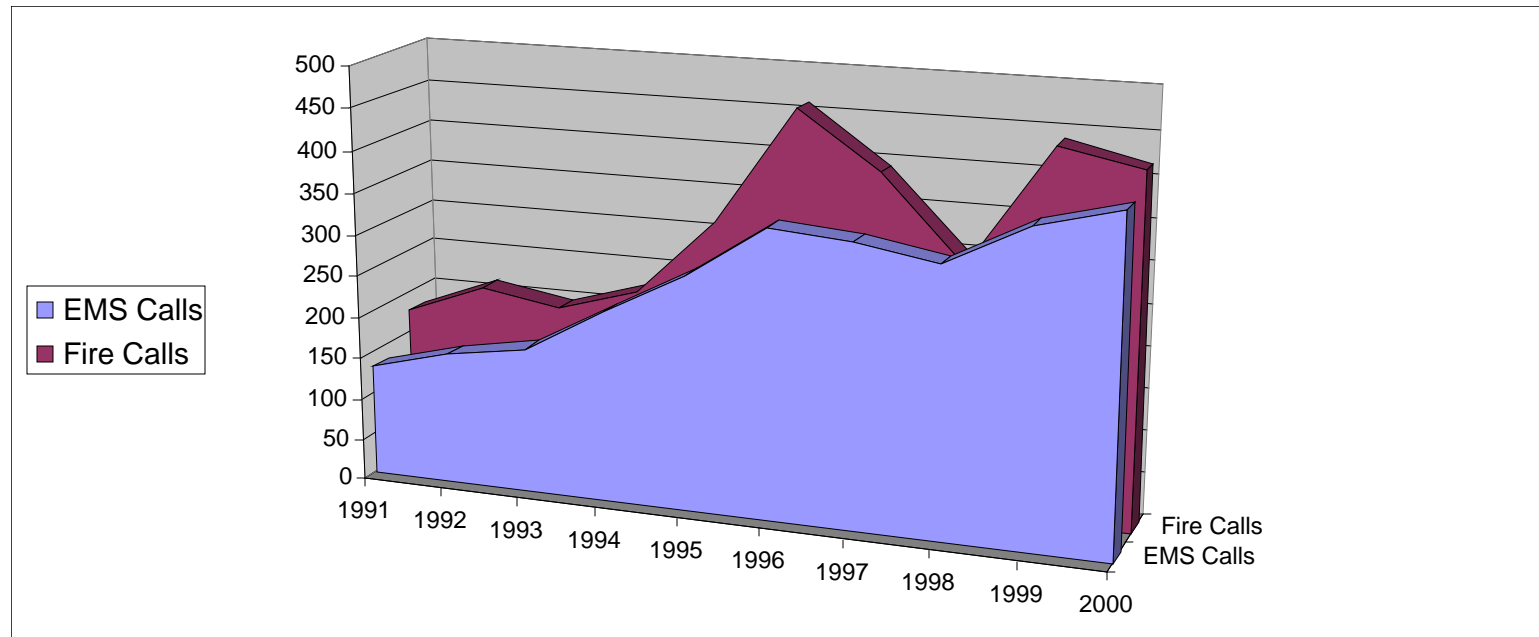
January	3
February	1
March	2
April	5
May	1
June	3
July	2
August	0
September	1
October	0
November	4
December	3
Total:	25



LOGAN-ROGERSVILLE FIRE PROTECTION DISTRICT

3427 South State Hwy 125
Rogersville, MO 65742
(417) 753-4265

TOTAL RESPONSE OF EMS VS. FIRE CALLS > 1991 THROUGH 2000 <



Year	No. of		No. of		Total Calls Per Year
	EMS Calls	Percentage	Fire Calls	Percentage	
1991	132	43.00%	175	57.00%	307
1992	157	42.32%	214	57.68%	371
1993	173	46.63%	198	53.37%	371
1994	227	50.00%	227	50.00%	454
1995	280	46.67%	320	53.33%	600
1996	344	42.73%	461	57.27%	805
1997	336	46.09%	393	53.91%	729
1998	319	52.12%	293	47.88%	612
1999	370	45.74%	439	54.26%	809
2000	396	48.65%	418	51.35%	814



LOGAN-ROGERSVILLE FIRE PROTECTION DISTRICT

3427 South State Hwy 125
Rogersville, MO 65742
(417) 753-4265

Truck Maintenance Report

	MILEAGE	TOTAL FUEL (Gal.)	FUEL COST	REPAIR COST	TOTAL COST	NUMBER OF CALLS
JANUARY	7240	623	\$ 854.46	\$1,052.51	\$ 1,906.97	71
FEBRUARY	6434	614	\$ 964.37	\$2,282.72	\$ 3,247.09	57
MARCH	6603	386.7	\$ 670.93	\$ 847.15	\$ 1,518.08	69
APRIL	6468	695.8	\$ 1,002.96	\$ 313.84	\$ 1,316.80	87
MAY	8585	820.3	\$ 1,134.64	\$1,199.70	\$ 2,334.34	65
JUNE	11934	760.6	\$ 1,153.83	\$ 956.62	\$ 2,110.45	65
JULY	7883	868.8	\$ 1,302.99	\$1,537.63	\$ 2,840.62	82
AUGUST	7171	691.1	\$ 953.76	\$1,049.92	\$ 2,000.78	65
SEPTEMBER	10561	855.2	\$ 1,291.37	\$1,986.20	\$ 3,277.57	89
OCTOBER	9948	985.6	\$ 1,482.49	\$ 957.46	\$ 2,575.40	54
NOVEMBER	3846	445.6	\$ 668.26	\$ 885.56	\$ 1,553.82	48
DECEMBER	5450	779.5	\$ 111.63	\$ -	\$ 1,111.63	79



LOGAN-ROGERSVILLE FIRE PROTECTION DISTRICT

3427 South State Hwy 125
Rogersville, MO 65742
(417) 753-4265

Apparatus Summary For The Year 2000 APPARATUS SUMMARY

ENGINES	YEAR	MAKE
134	1992	FREIGHTLINER
135	2000	INTERNATIONAL
233	1997	INTERNATIONAL
332	1970	FORD
431	1973	FORD
RESCUES	YEAR	MAKE
111	1995	FORD
212	1991	CHEVY
BRUSH	YEAR	MAKE
422	1995	FORD
321	1993	FORD
123	1977	DODGE
124	1985	DODGE
TRUCK	YEAR	MAKE
252	1987	GMC
TANKER	YEAR	MAKE
143	1987	GMC
242	1992	INTERNATIONAL
341	1996	INTERNATIONAL
444	1971	GMC
SERVICE	YEAR	MAKE
302	1974	CHEVY